

VERSA-LOK REVEAL

SKU: VLR

MATERIAL

.032, .040 aluminum

PANEL SPECS

Horizontal or Vertical Orientation:
12" x 36", 12" x 60", 16" x 36", 16" x 60"

Custom sizes available*

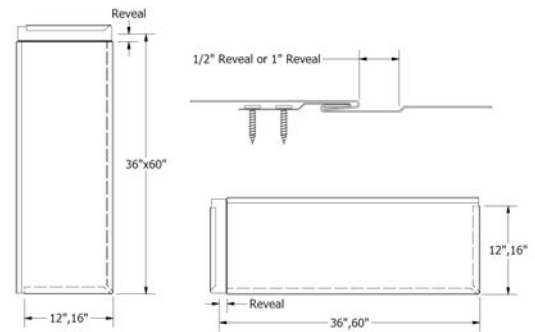
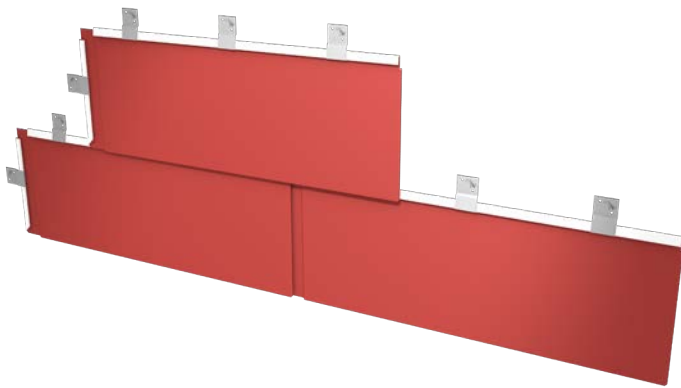
Must specify panel orientation and direction of panel installation

Reveal: 1/2", 1"

TEXTURE

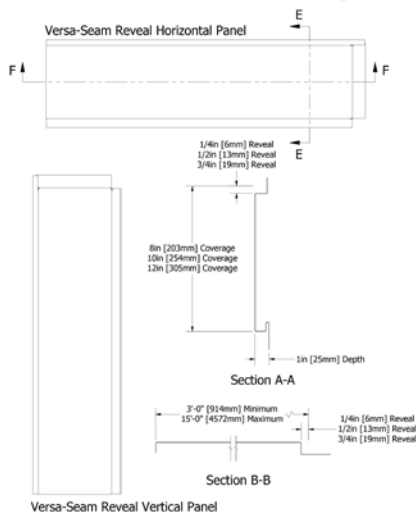
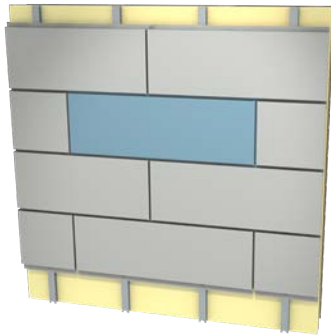
Smooth

www.atas.com/versalokreveal



Vertical Versa-Lok Reveal Panel
(standard right-to-left panel)

Horizontal Versa-Lok Reveal Panel
(standard right-to-left panel)



VERSA-SEAM REVEAL

SKU: VSR

MATERIAL

.032, .040 aluminum

PANEL SPECS

Coverage: 8", 10", 12" | Custom widths available in 1" increments*

Reveal: 1/4", 1/2", 3/4"

Minimum Length: 3'-0"

Maximum Length: 15'-0"

Depth: 1"

AVAILABLE

Perforations

TEXTURE

Smooth, Stucco Embossed, or Wood Grain

www.atas.com/versaseamreveal