

CORRUGATED PANEL

SKU: BWC374

MATERIAL

.032, .040, .050 aluminum

24, 22*, 20* ga. metallic coated steel

24, 22*, 20* ga. 55% Al-Zn alloy coated steel with acrylic coating

16, 20 oz. copper*^

.8, 1.0, 1.2 mm zinc*^

^Inquire for available panel widths

PANEL SPECS

Coverage: 37 1/4"

Minimum Length: 6'-0"

Depth: 7/8"

AVAILABLE

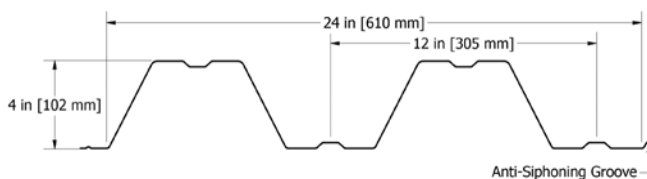
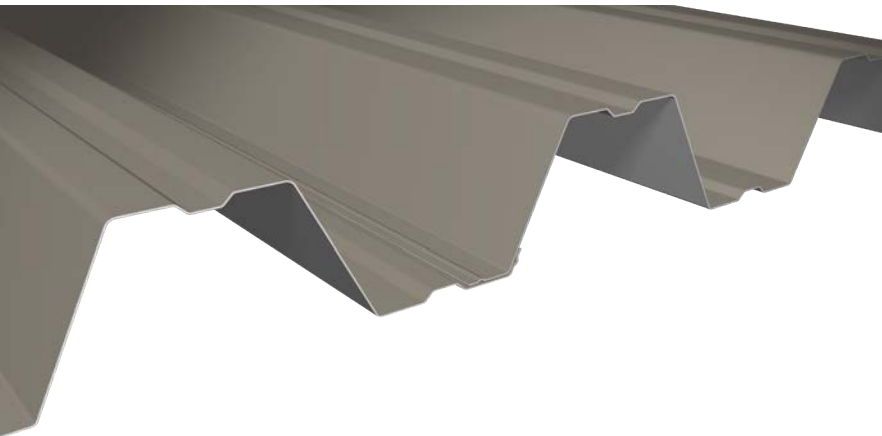
Crimp-Curving (convex and concave)

Stretch Curving

TEXTURE

Smooth or Stucco Embossed

 www.atas.com/corrugated



SPAN WALL™

SKU: BWS240

MATERIAL

.032, .040, .050 aluminum

24, 22*, 20, 18 ga. metallic coated steel

24, 22*, 20*, 18* ga. 55% Al-Zn alloy coated steel with acrylic coating

.8, 1.0 mm zinc*

16, 20 oz. copper*

PANEL SPECS

Coverage: 24"

Minimum Length: 6'-0"

Depth: 4"

AVAILABLE

Crimp-Curving (convex and concave)

TEXTURE

Smooth or Stucco Embossed

 www.atas.com/spanwall