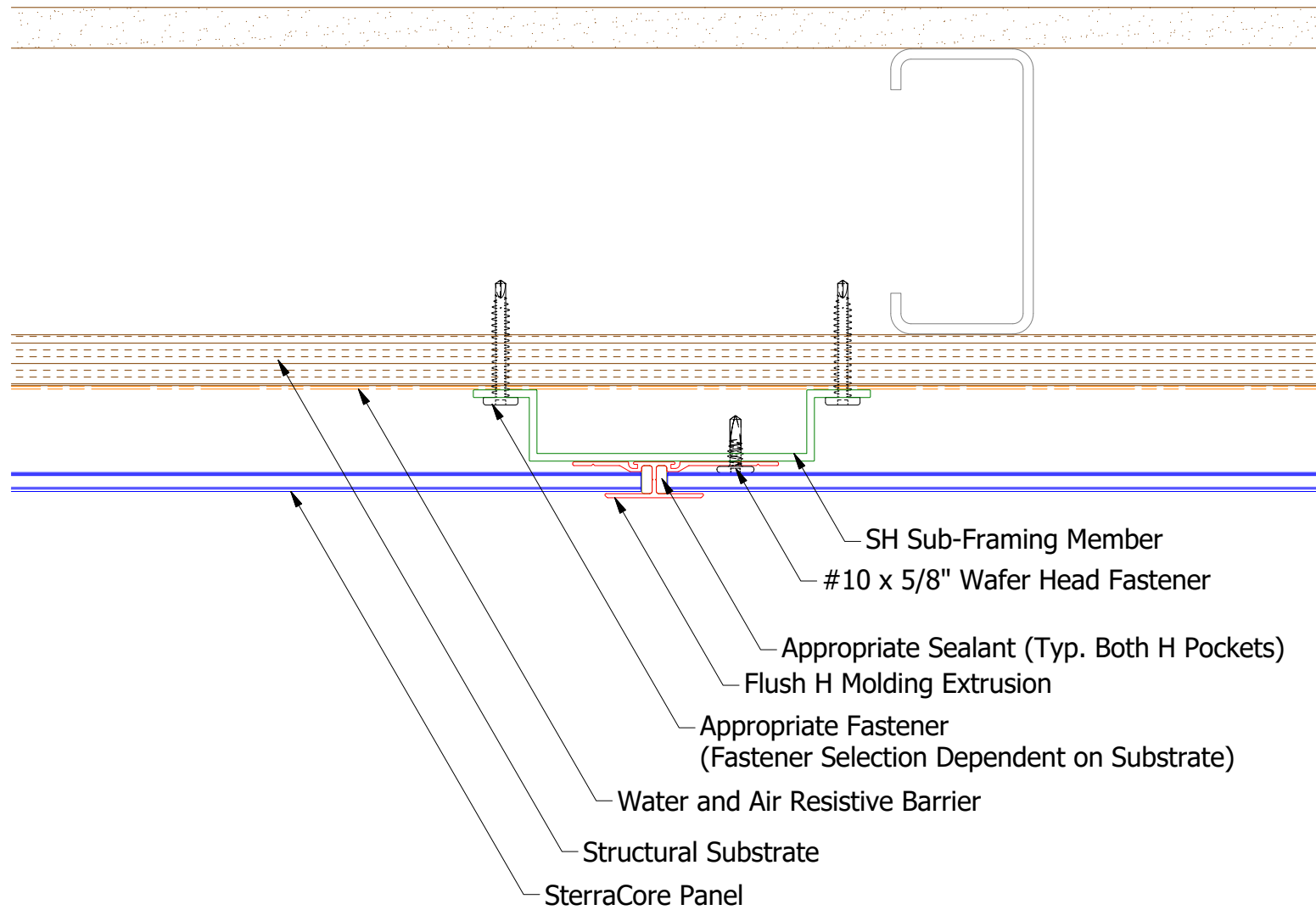
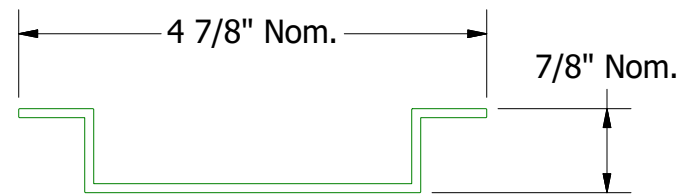


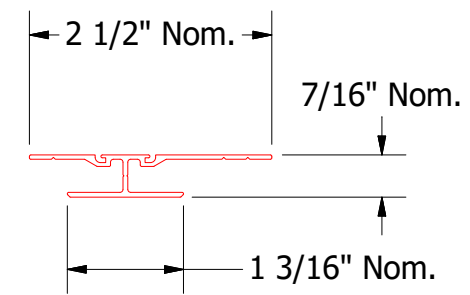
# Vertical Panel



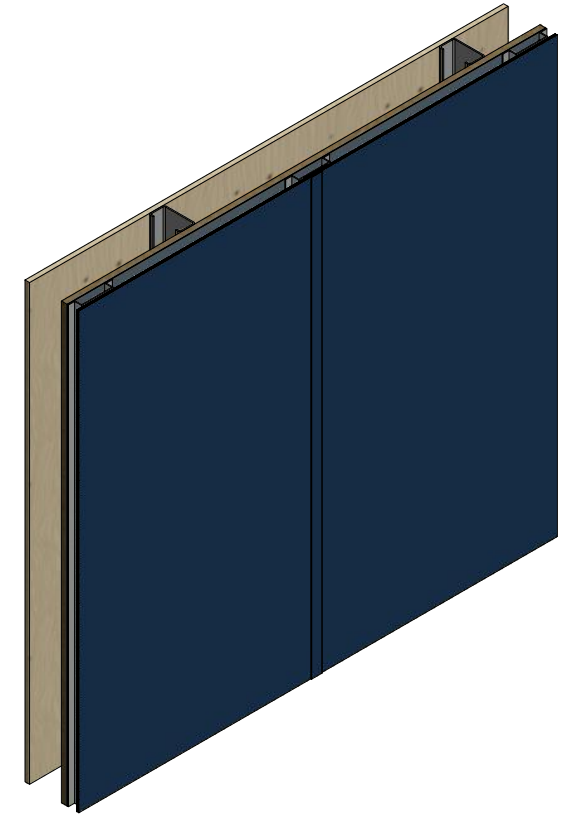
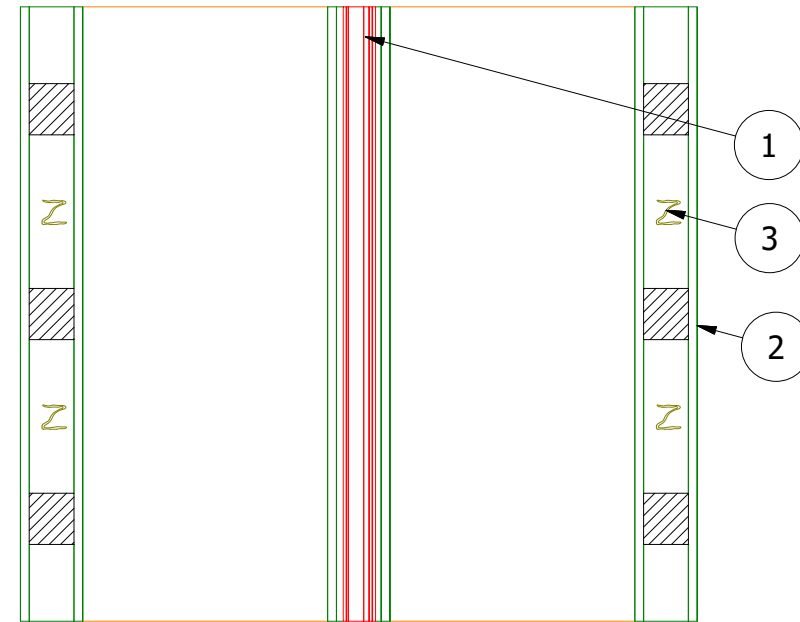
**SterraCore Panel**



**SH Sub-Framing Member**  
 (Used for Standard Flush H Molding Extrusion)



**Flush H Molding Extrusion**



(1) Vertical Flush Joint Installed on SH Sub-Framing Member.

(2) Sub-Framing Member Applied 16" - 24" O.C.

(3) Panel Adhesive Applied 16" O.C. Vertically and 4" Foam Tape Strips Installed Vertically on Sub-Framing Member. (Refer to Sub-Framing Details)

**Note:** Spacing between Panels and Water and Air Resistive Barrier are shown for Clarity.



ATAS INTERNATIONAL, INC  
 Allentown PA  
 610-395-8445  
 Mesa AZ  
 480-558-7210

TITLE SterraCore Vertical Transition Detail - 1 Piece			
DWG. NO.	DR	DATE	
	DMR	5/1/2020	
MATERIAL	APP	DATE	
	SH. SIZE	B	SCALE X:X

REV. NO.	DATE	DESCRIPTION OF REVISION	BY	APP