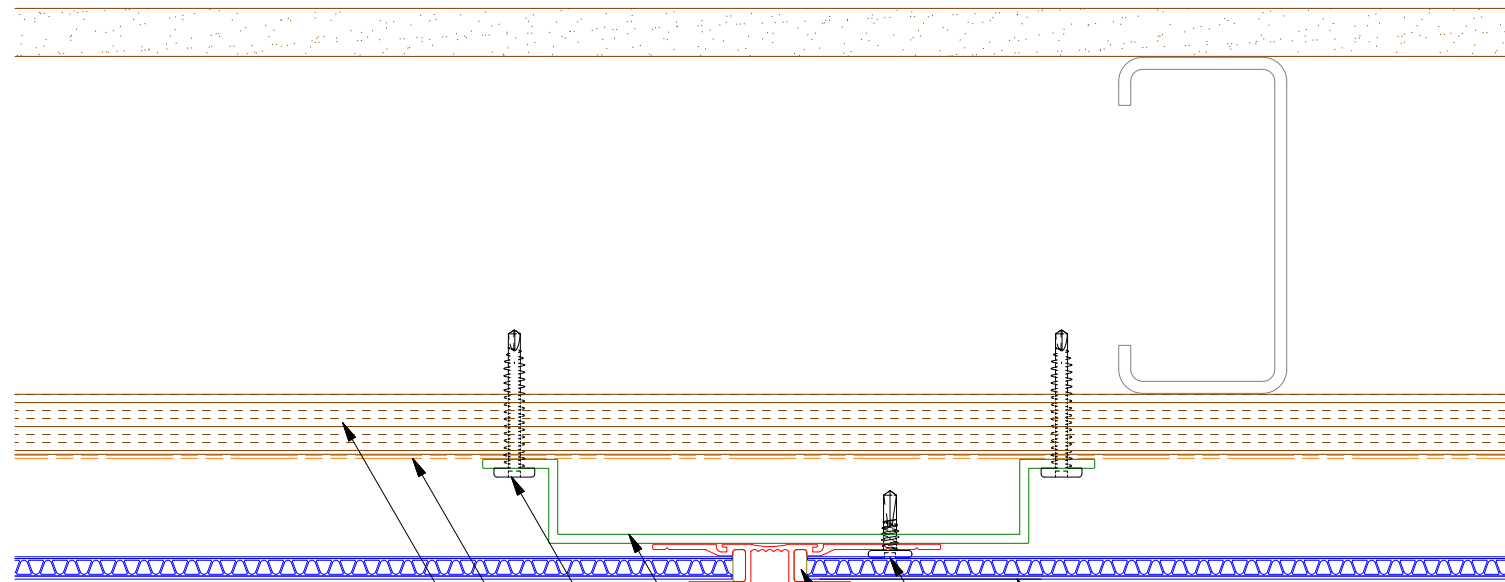
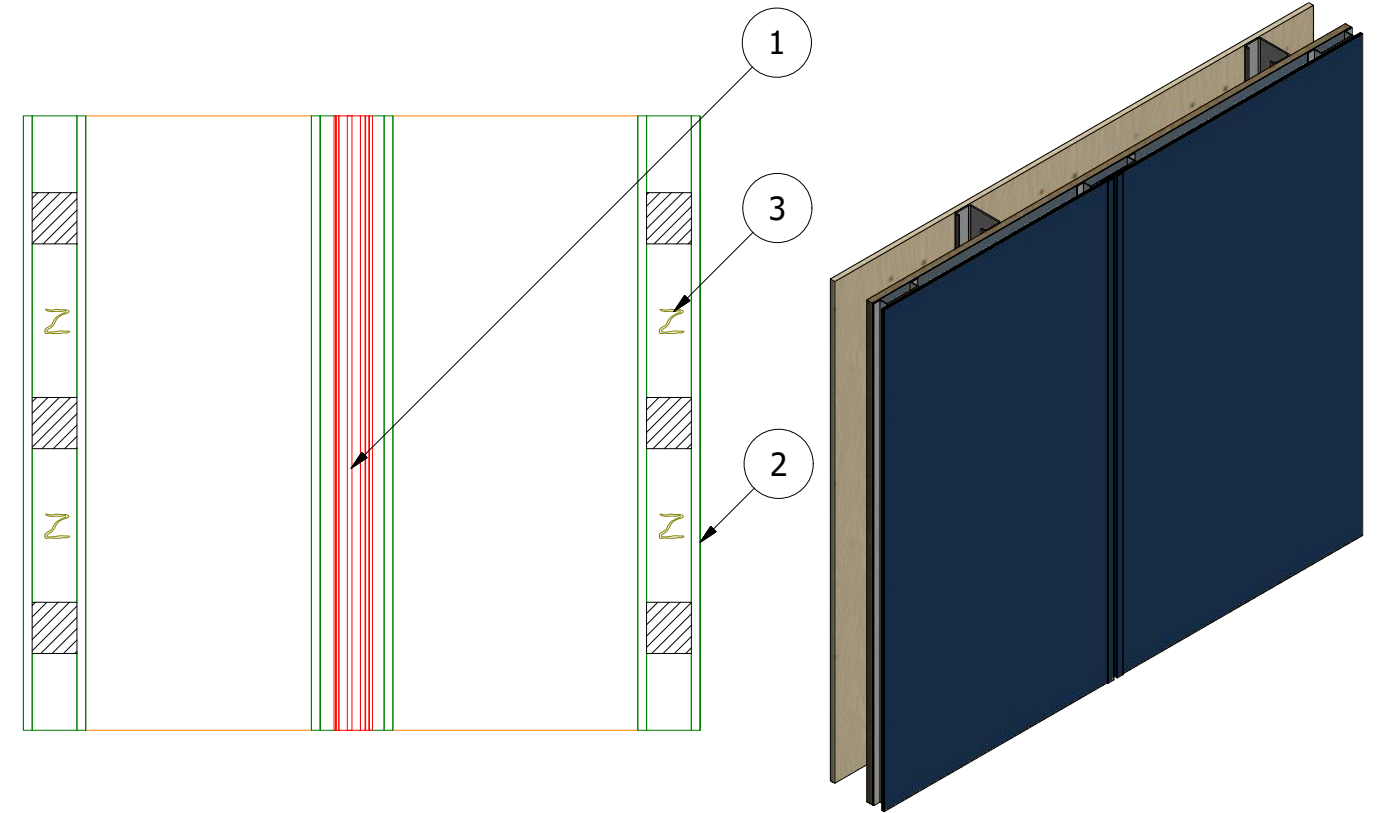


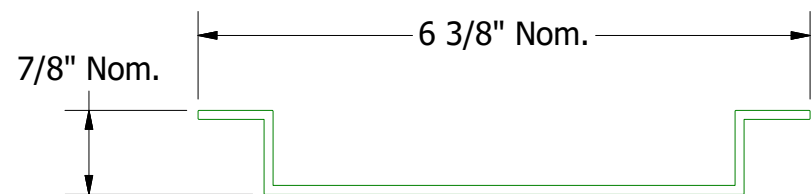
Vertical Panel



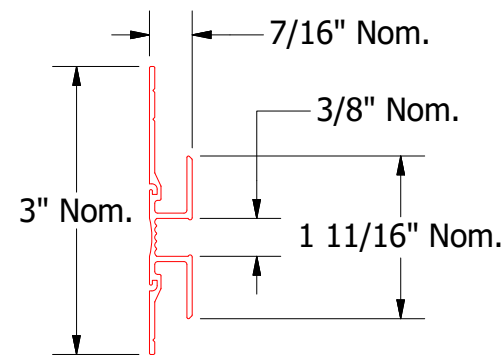
- SterraCore Panel
- #10 x 5/8" Wafer Head Fastener
- Appropriate Sealant (Typ. Both H Pockets)
- Vertical Reveal H Molding Extrusion
- RH Sub-Framing Member
- Appropriate Fastener (Fastener Selection at Dependent on Substrate)
- Water and Air Resistive Barrier
- Structural Substrate



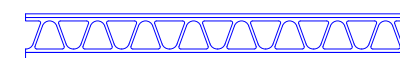
- (1) Vertical Reveal Joint Installed on RH Sub-Framing Member.
- (2) Sub-Framing Member Installed 16" - 24" O.C.
- (3) Panel Adhesive Applied 16" O.C. Vertically and 4" Foam Tape Strips Installed Vertically on Sub-Framing Member. (Refer to Sub-Framing Details)



RH Sub-Framing Member
(Used For Reveal H Molding Extrusion)

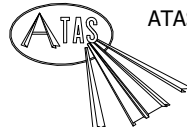


Reveal H Molding Extrusion



SterraCore Panel

Note: Spacing between Panels and Water and Air Resistive Barrier are shown for Clarity.

| | | | |
|---|--|---|-------------------------|
|  ATAS INTERNATIONAL, INC Allentown PA 610-395-8445 Mesa AZ 480-558-7210 | | TITLE SterraCore Vertical Reveal Detail - 1 Piece | |
| | | DWG. NO. | DR DATE DMR 5/1/2020 |
| REV. NO. | | DATE | DESCRIPTION OF REVISION |
| BY | | APP | SCALE X:X |