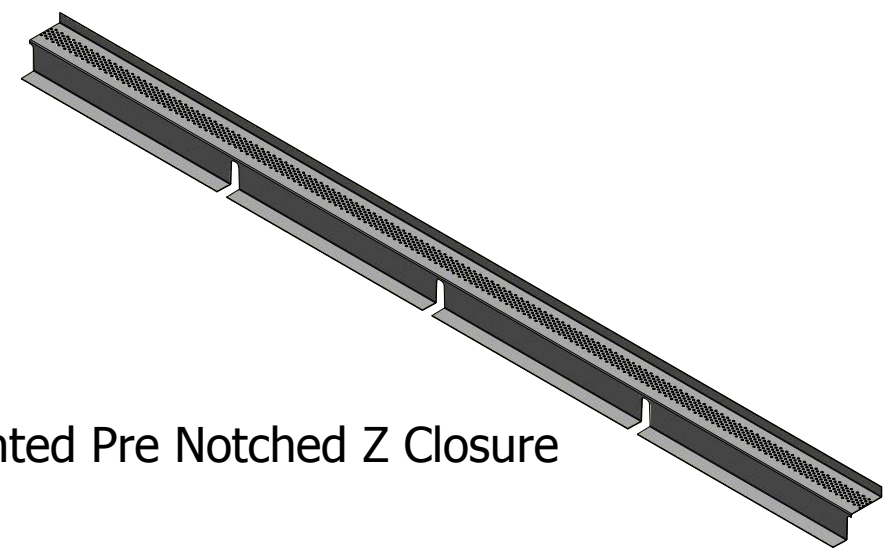
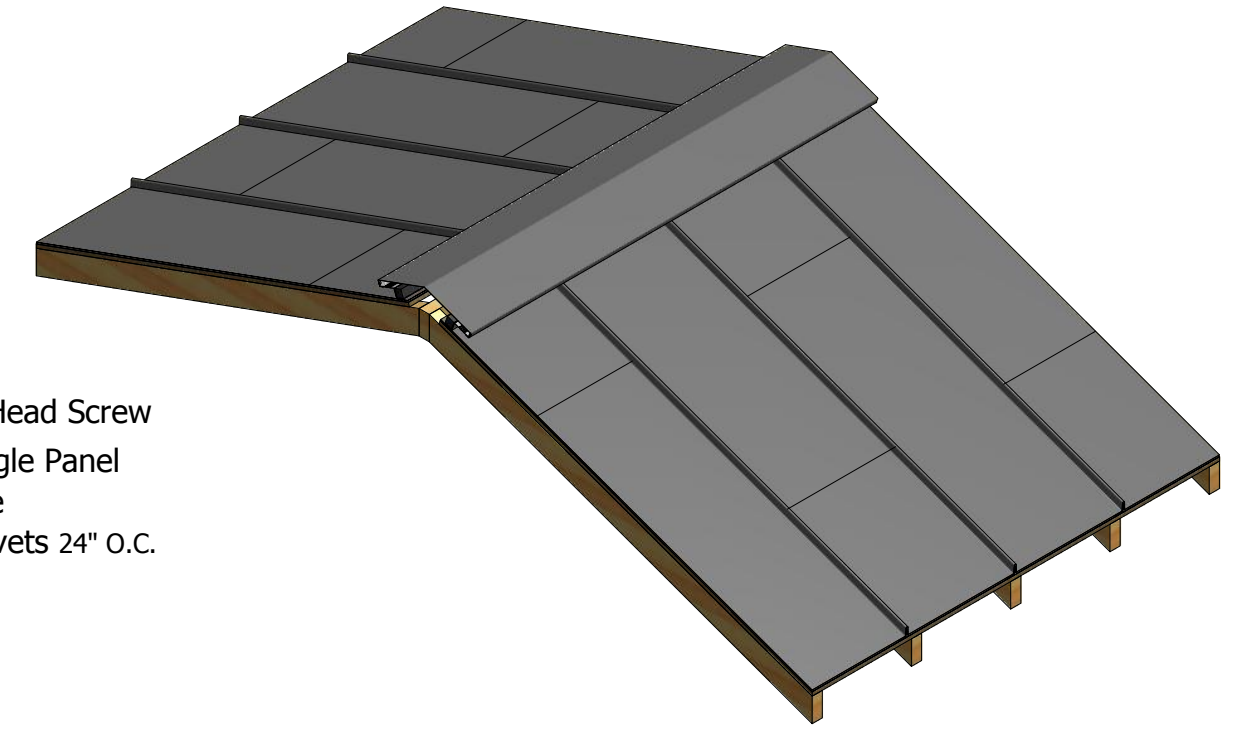
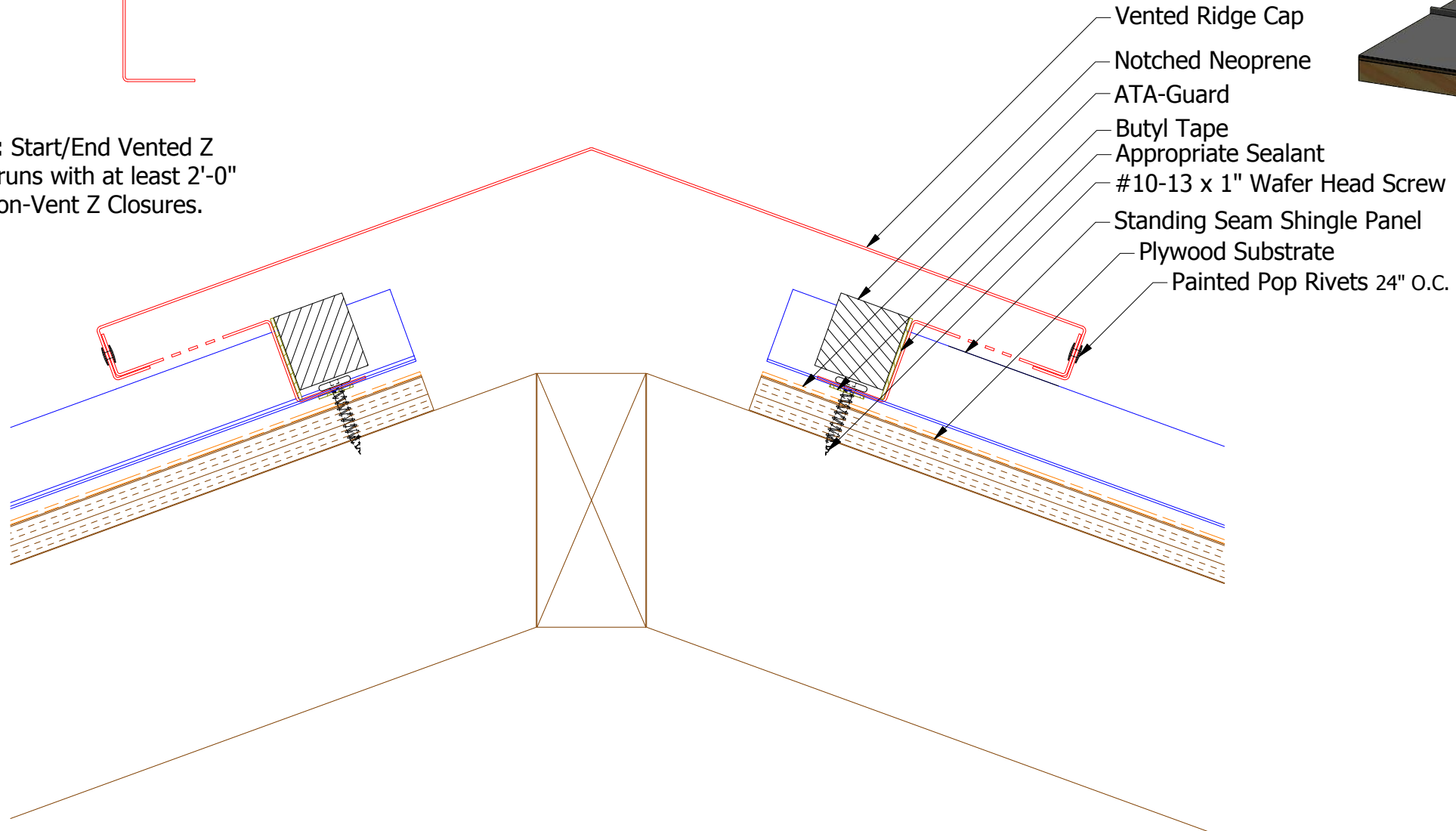
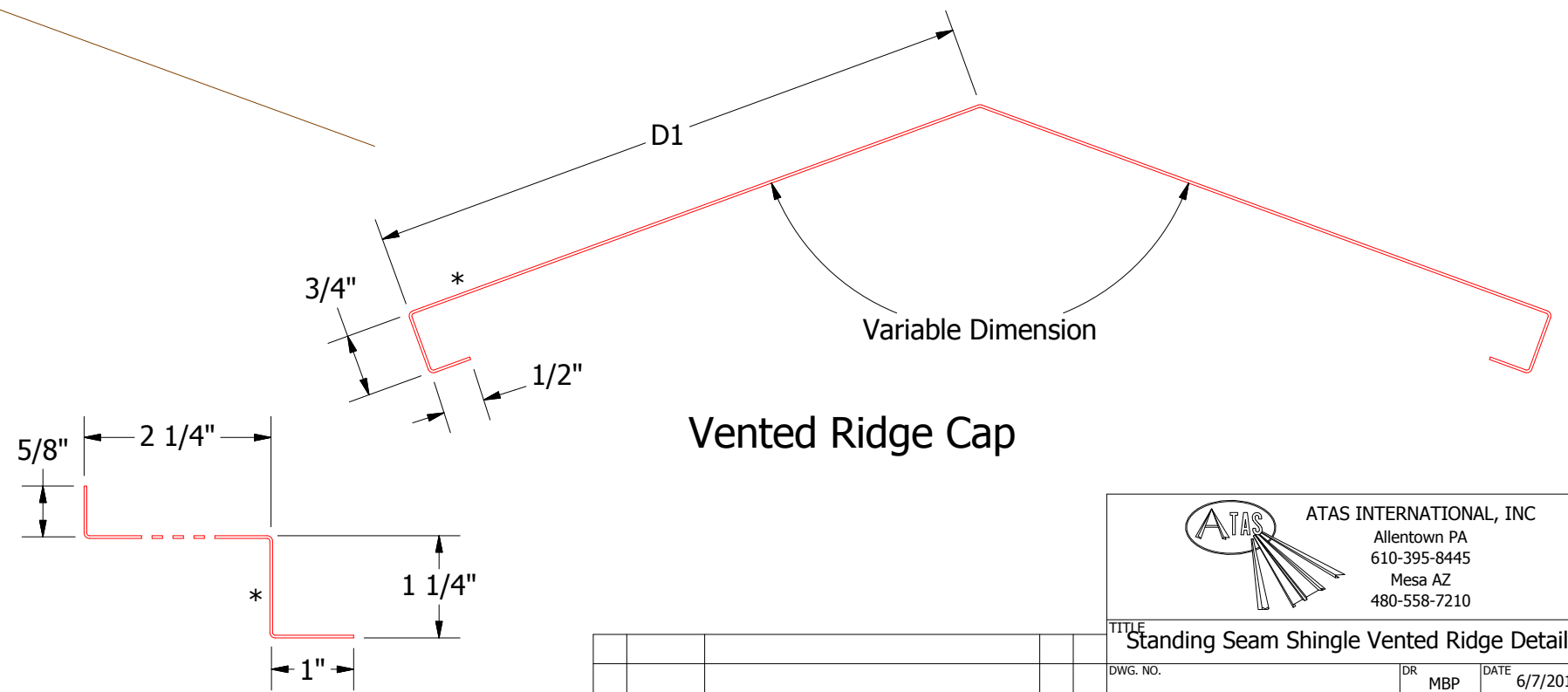


Note: Start/End Vented Z Closure runs with at least 2'-0" of Non-Vent Z Closures.



Factory Vented Pre Notched Z Closure



Vented Ridge Cap

HSA911-Vented Z Closure

Note: * denotes color side.

Note: Neoprene Closures are not required if Factory Pre Notched Z Closures are utilized.

ATAS ATAS INTERNATIONAL, INC
 Allentown PA
 610-395-8445
 Mesa AZ
 480-558-7210

TITLE Standing Seam Shingle Vented Ridge Detail			
DWG. NO.	DR MBP	DATE 6/7/2019	
	APP	DATE	
MATERIAL	SH. SIZE B	SCALE X:X	

REV. NO.	DATE	DESCRIPTION OF REVISION	BY	APP