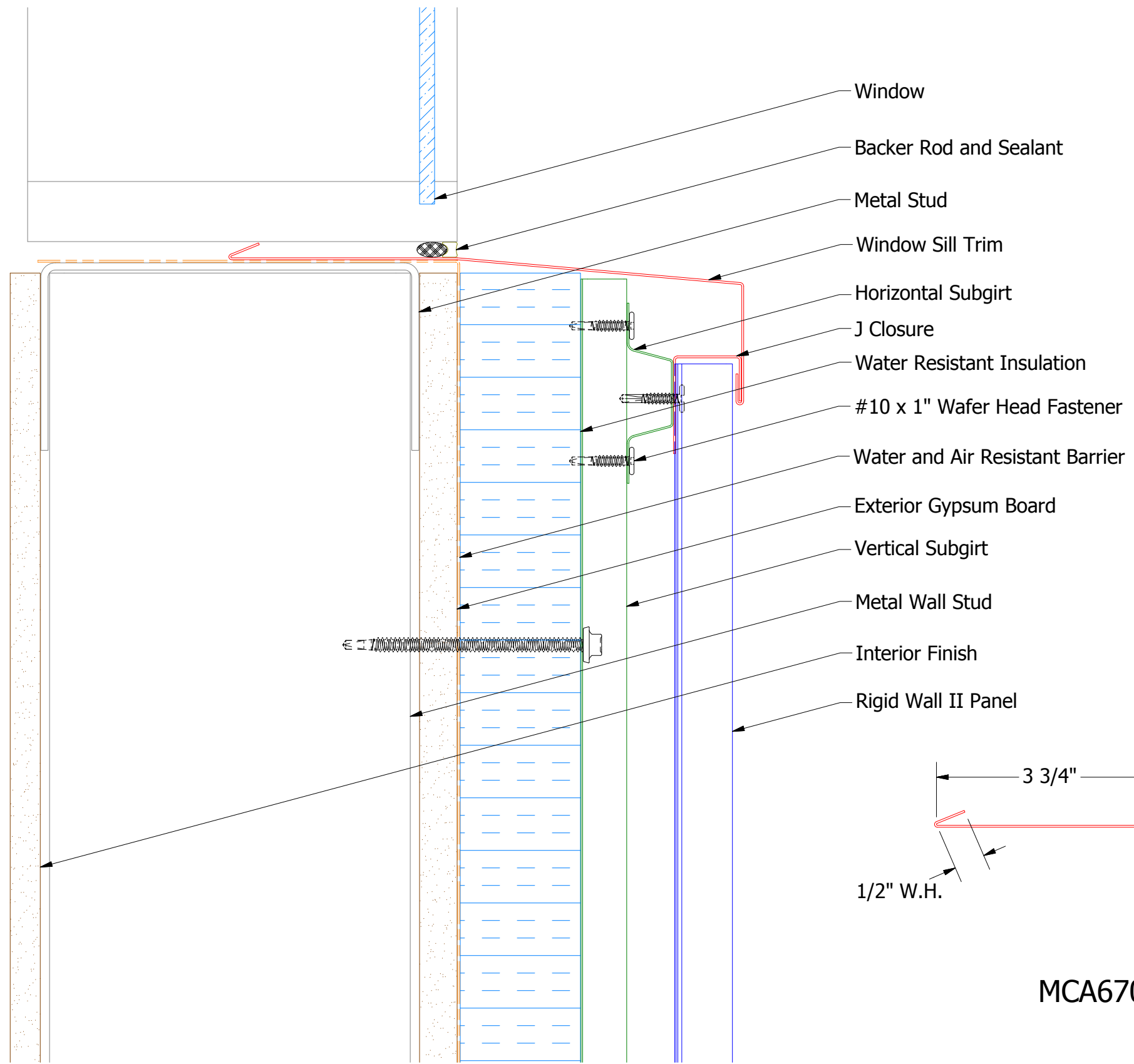
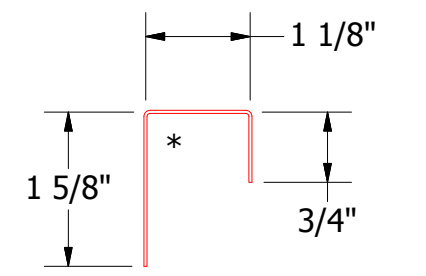
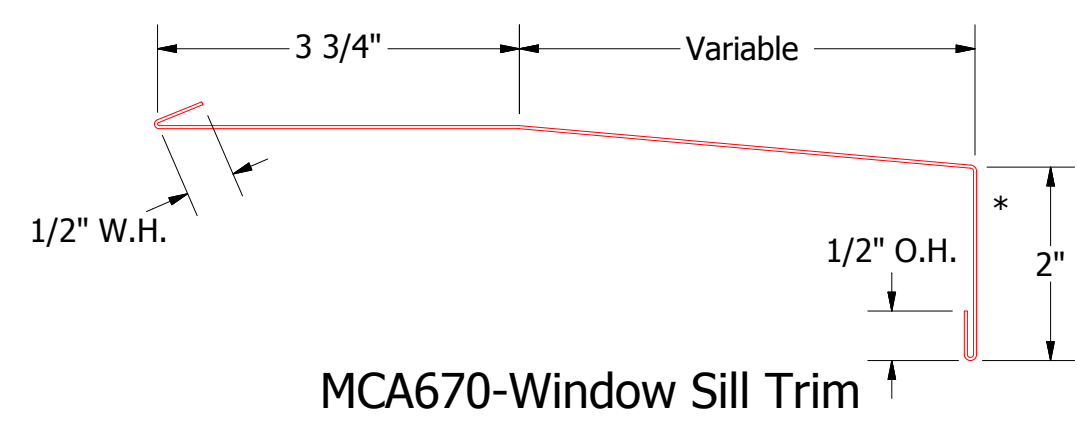
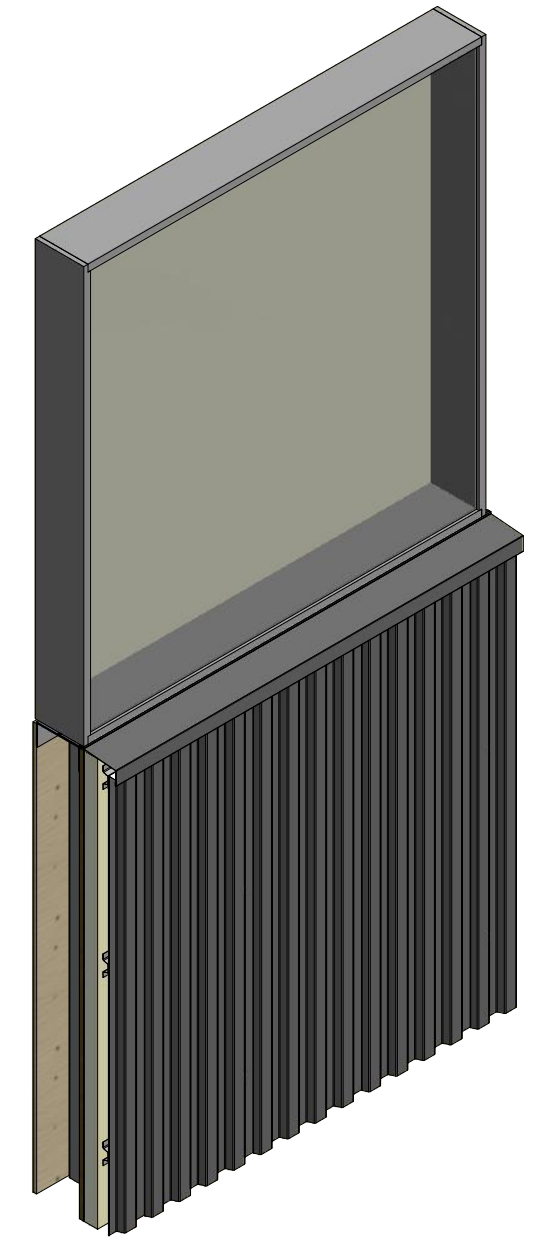


Vertical Panel



- Window
- Backer Rod and Sealant
- Metal Stud
- Window Sill Trim
- Horizontal Subgirt
- J Closure
- Water Resistant Insulation
- #10 x 1" Wafer Head Fastener
- Water and Air Resistant Barrier
- Exterior Gypsum Board
- Vertical Subgirt
- Metal Wall Stud
- Interior Finish
- Rigid Wall II Panel



MCA270-J Closure

MCA670-Window Sill Trim

2 Stage Method of Weather Proofing

ATAS ATAS INTERNATIONAL, INC
 Allentown PA
 610-395-8445
 Mesa AZ
 480-558-7210

TITLE				Rigid Wall II Window Sill Detail	
DWG. NO.	DR	DATE	APP	DATE	
	KRK	3/16/2015			
MATERIAL	SH. SIZE	SCALE			
	B	X:X			

REV. NO.	DATE	DESCRIPTION OF REVISION	BY	APP