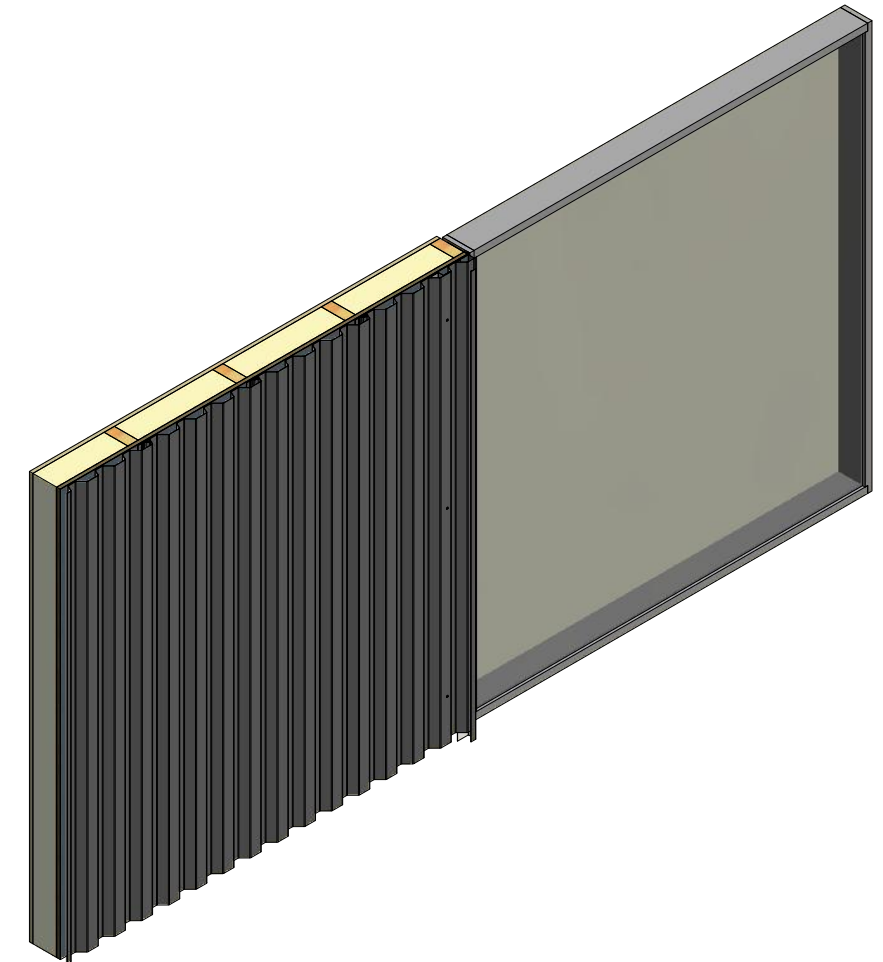
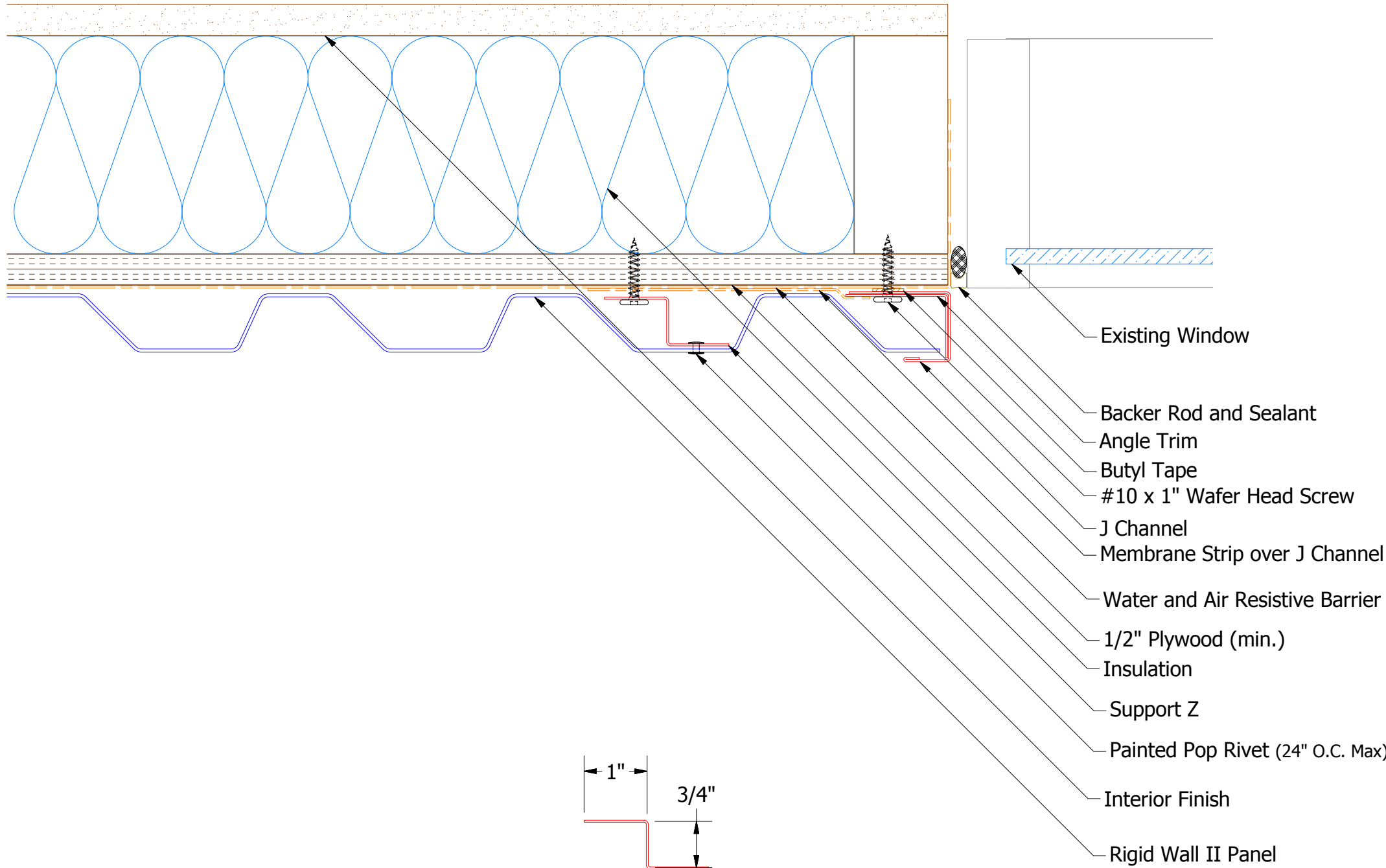


# Vertical Panel



Existing Window

Backer Rod and Sealant

Angle Trim

Butyl Tape

#10 x 1" Wafer Head Screw

J Channel

Membrane Strip over J Channel and Angle Trim

Water and Air Resistive Barrier

1/2" Plywood (min.)

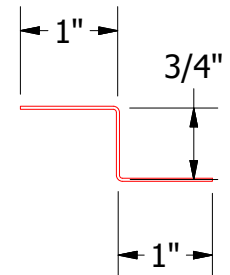
Insulation

Support Z

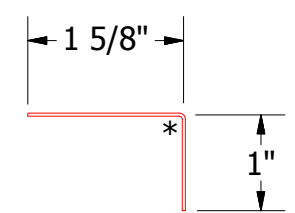
Painted Pop Rivet (24" O.C. Max)

Interior Finish

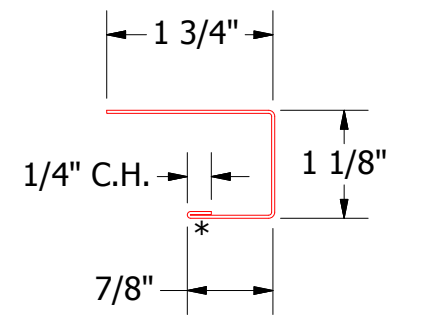
Rigid Wall II Panel



MCA681 - Support Z



MCA680 - Angle Trim



MCA118 - J Channel



ATAS INTERNATIONAL, INC  
Allentown PA  
610-395-8445  
Mesa AZ  
480-558-7210

TITLE Rigid Wall II (Existing Window) Jamb Detail

REV. NO.	DATE	DESCRIPTION OF REVISION	BY	APP	DWG. NO.	DR	DMR	DATE	7/11/2016
						APP	DAS	DATE	7/25/16
						SH. SIZE	B	SCALE	X:X