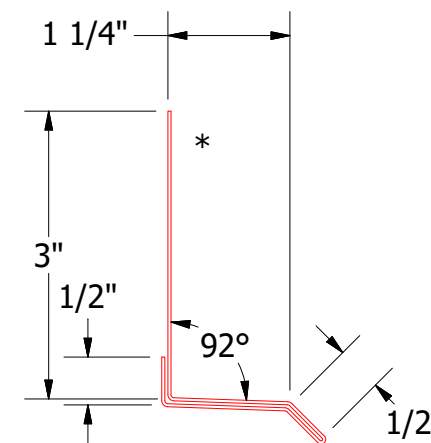
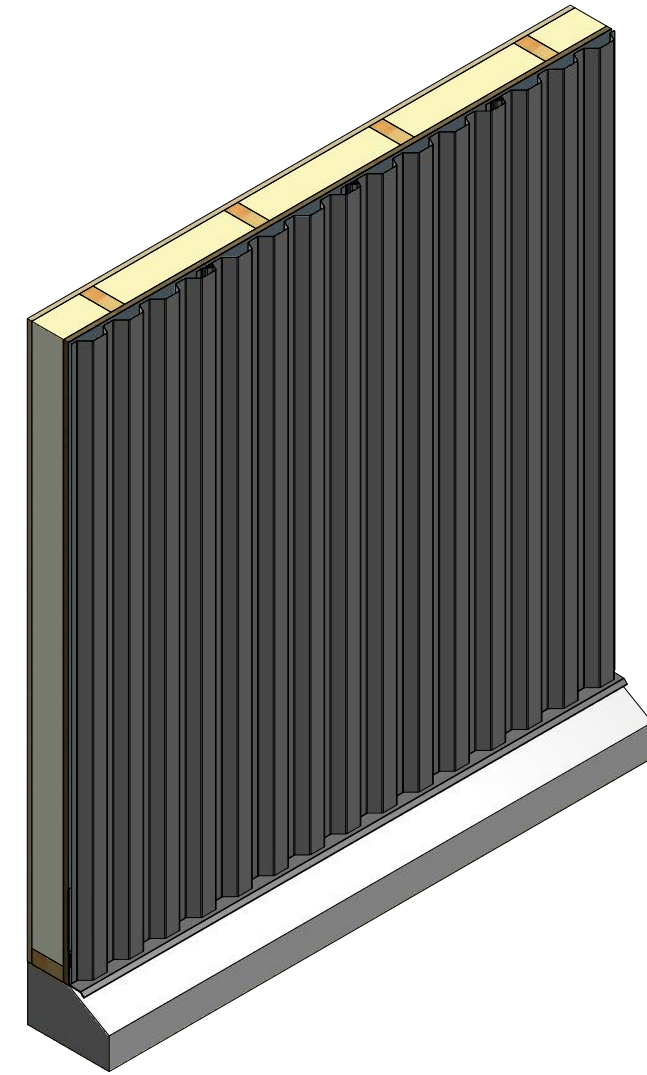
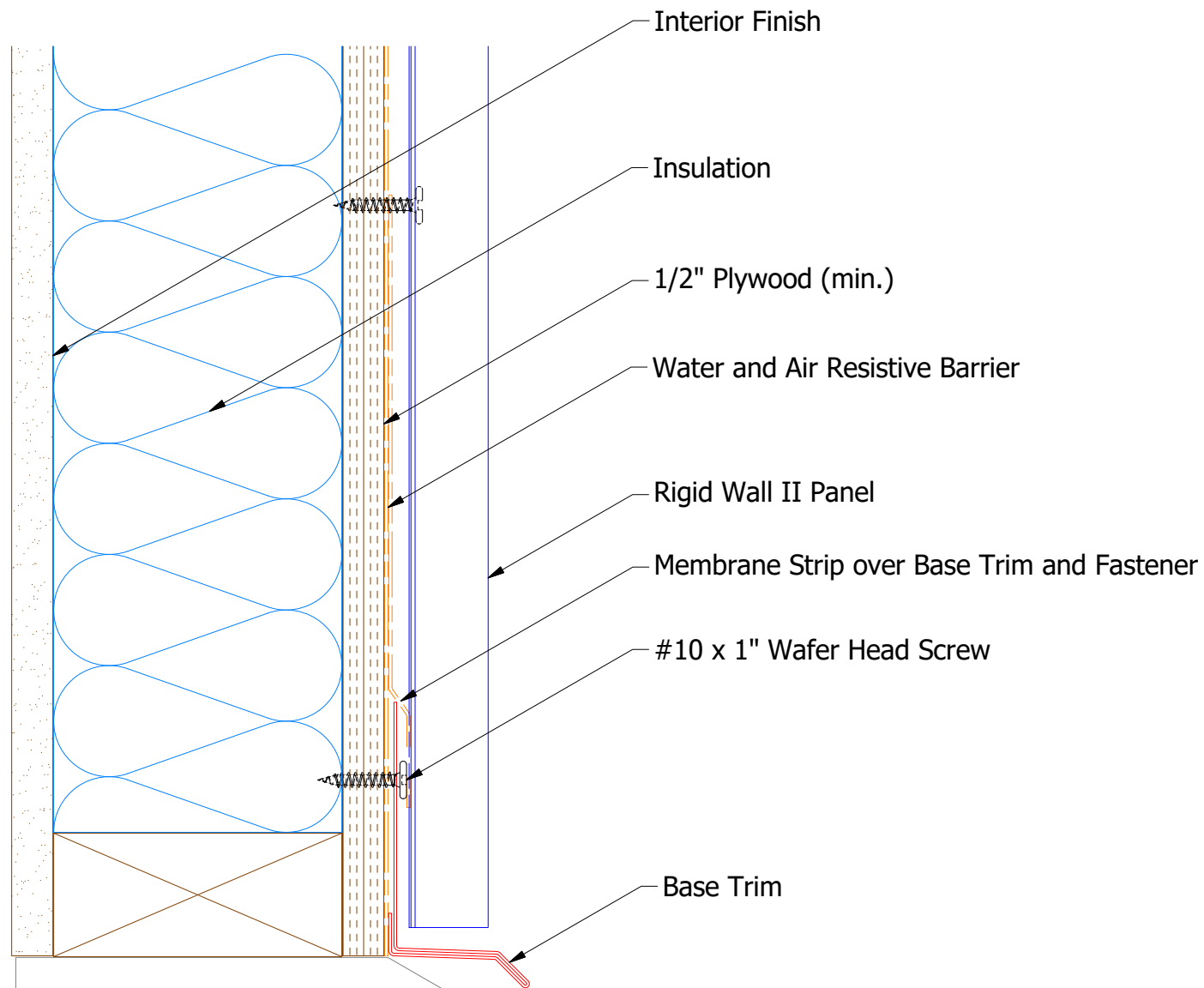


Vertical Panel



MCA661 - Base Trim

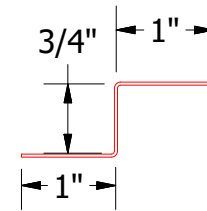
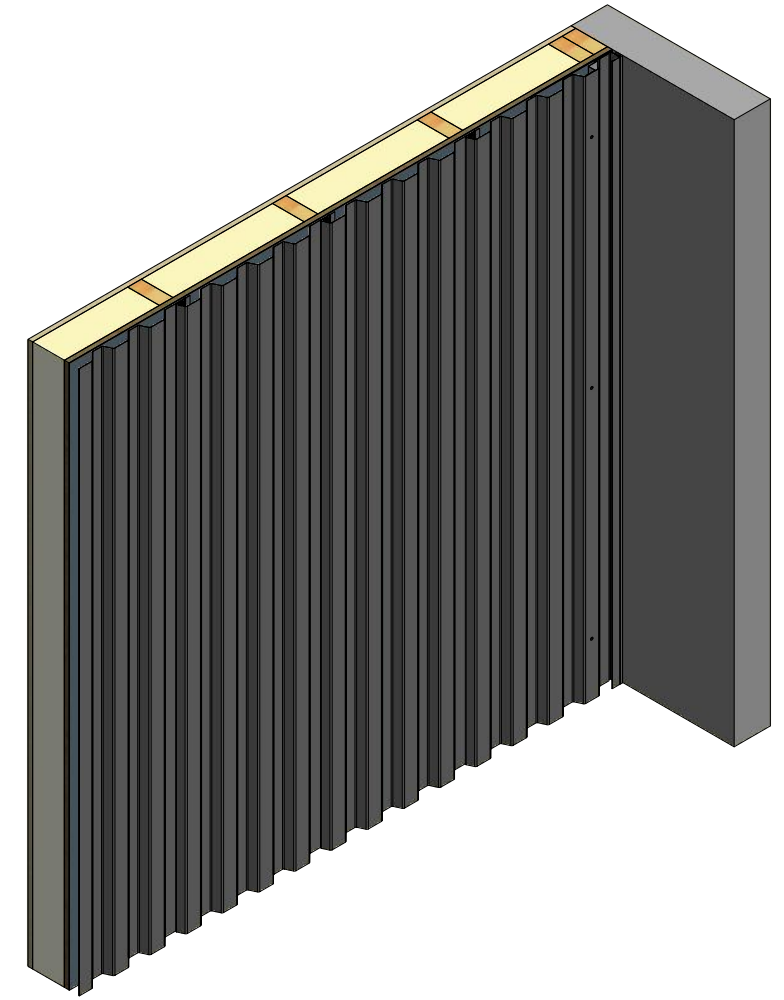
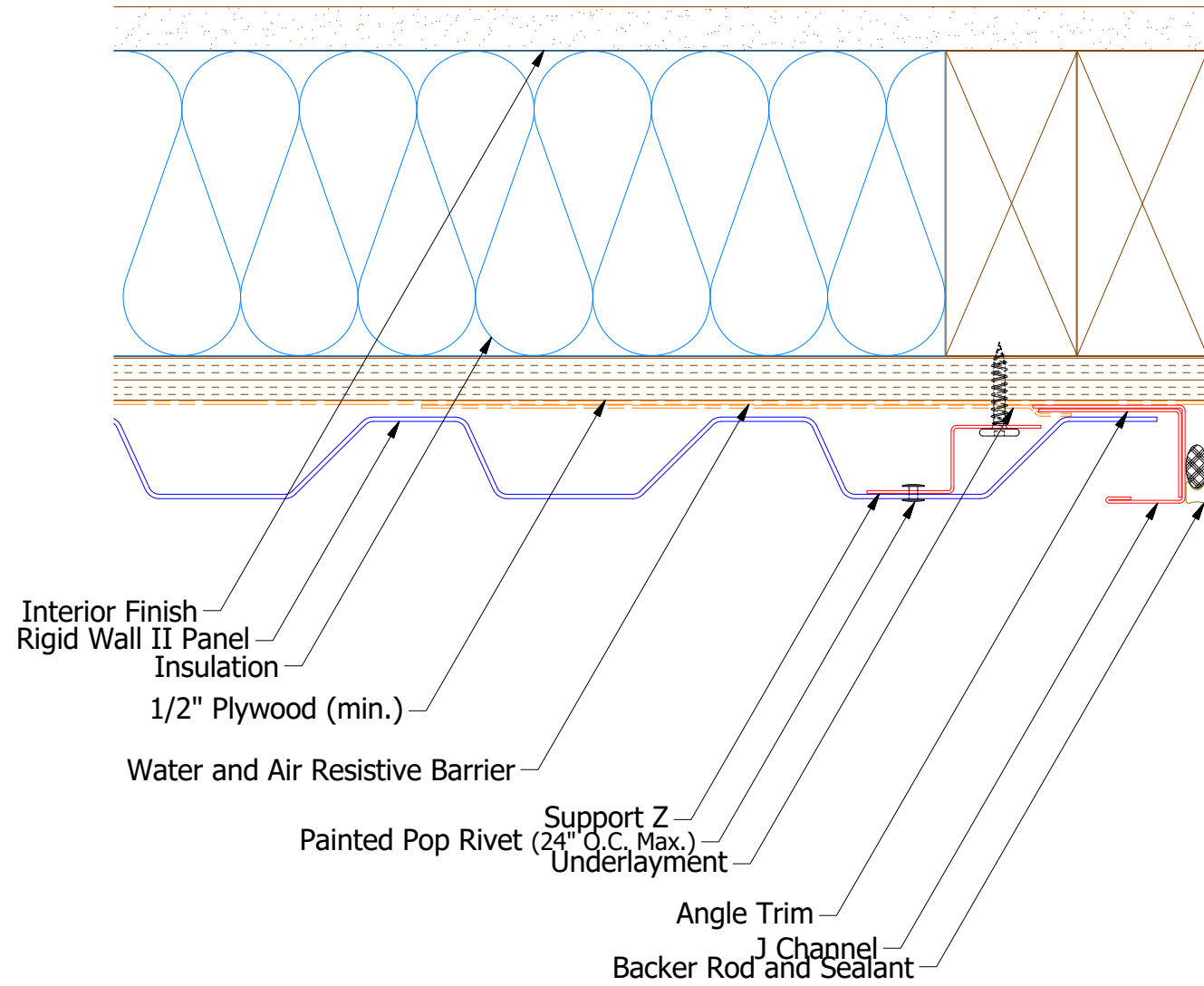


ATAS INTERNATIONAL, INC
 Allentown PA
 610-395-8445
 Mesa AZ
 480-558-7210

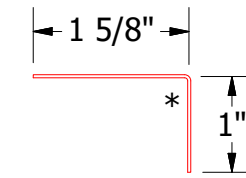
TITLE Rigid Wall II Base Detail

REV. NO.	DATE	DESCRIPTION OF REVISION	BY	APP	DWG. NO.	DR	DMR	DATE	7/11/2016
						APP	DAS	DATE	7/25/16
						SH. SIZE	B	SCALE	X:X

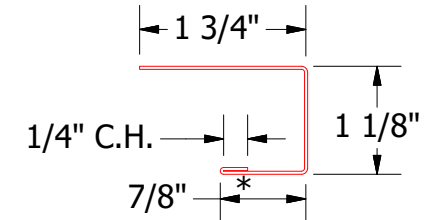
Vertical Panel



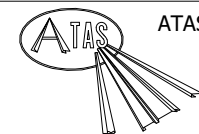
MCA681 - Support Z



MCA270 - Angle Trim



MCA118 - J Channel

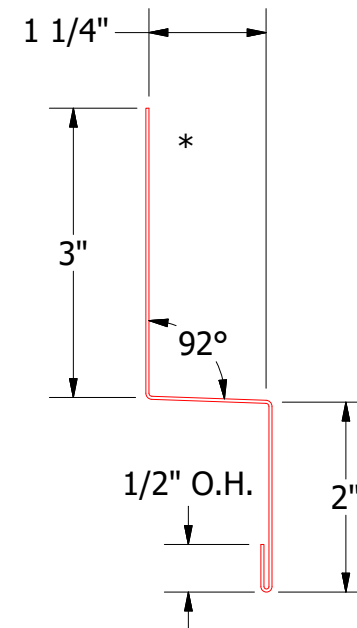
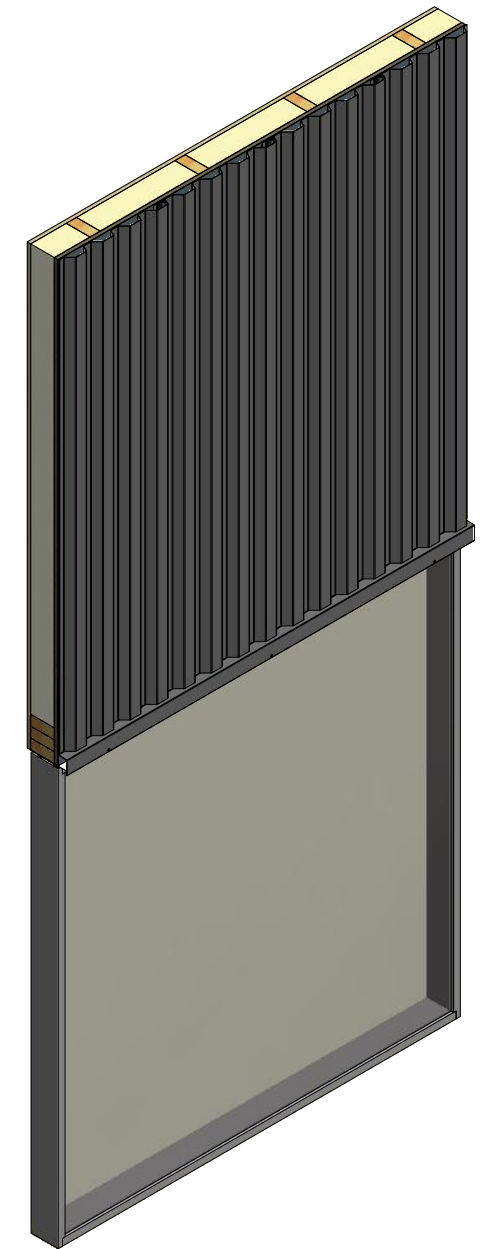
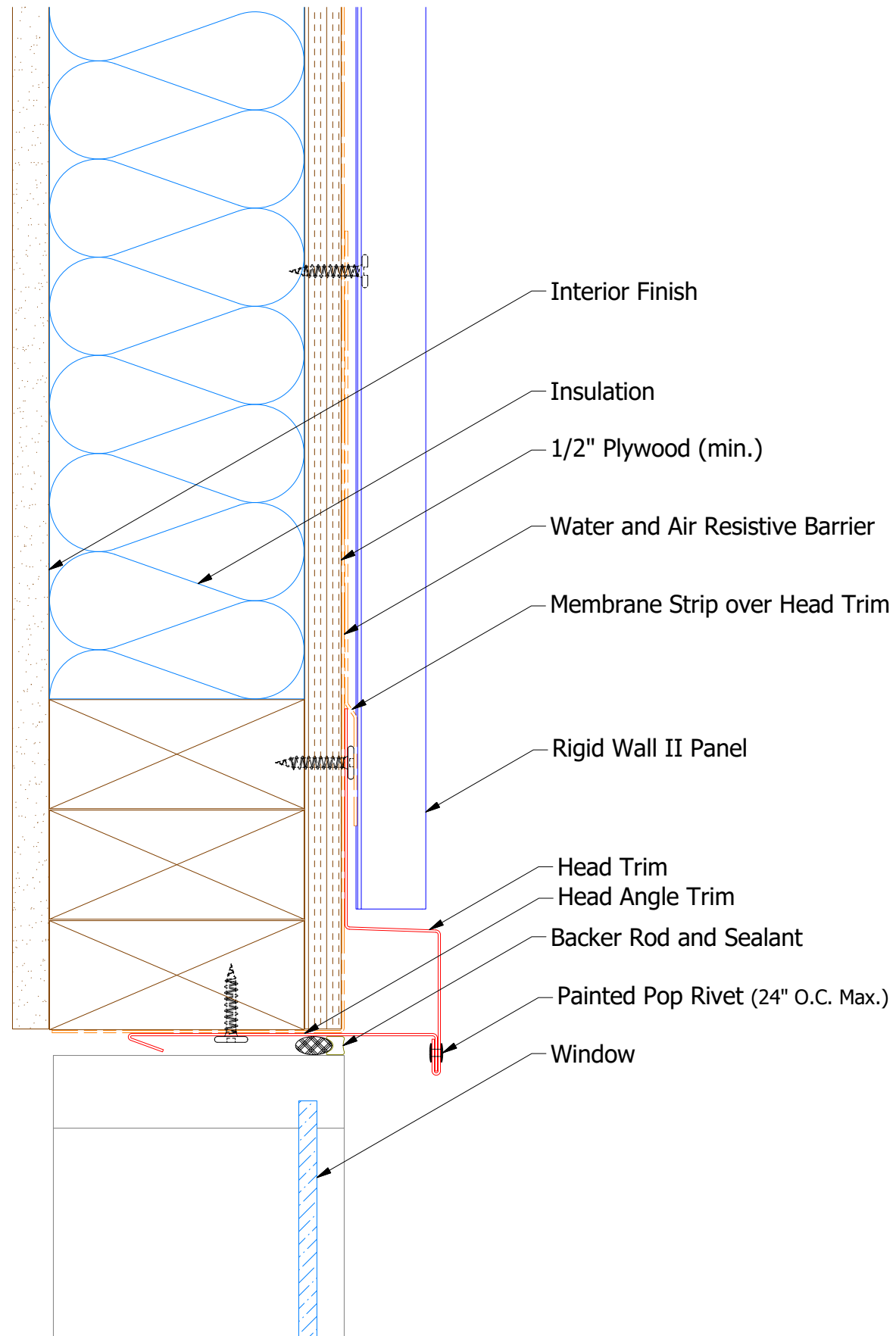


ATAS INTERNATIONAL, INC
 Allentown PA
 610-395-8445
 Mesa AZ
 480-558-7210

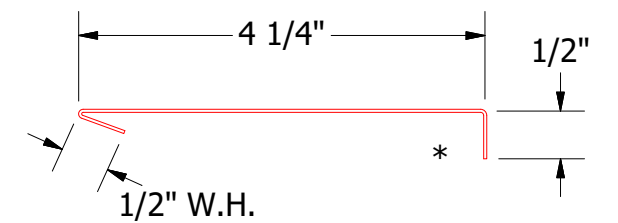
TITLE Rigid Wall II Endwall Detail

REV. NO.	DATE	DESCRIPTION OF REVISION	BY	APP	DWG. NO.	DR MBP	DATE 7/11/2016
						APP DAS	DATE 7/25/16
					MATERIAL	SH. SIZE B	SCALE X:X

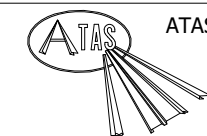
Vertical Panel



MCA550 - Head Trim



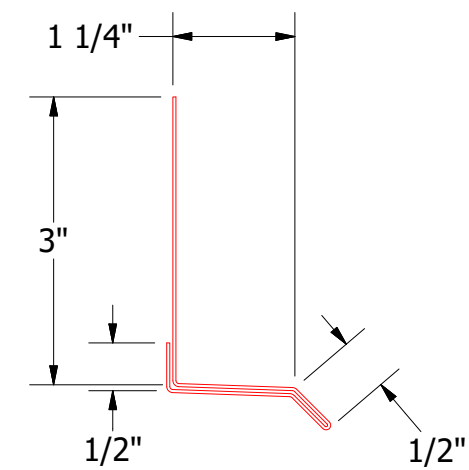
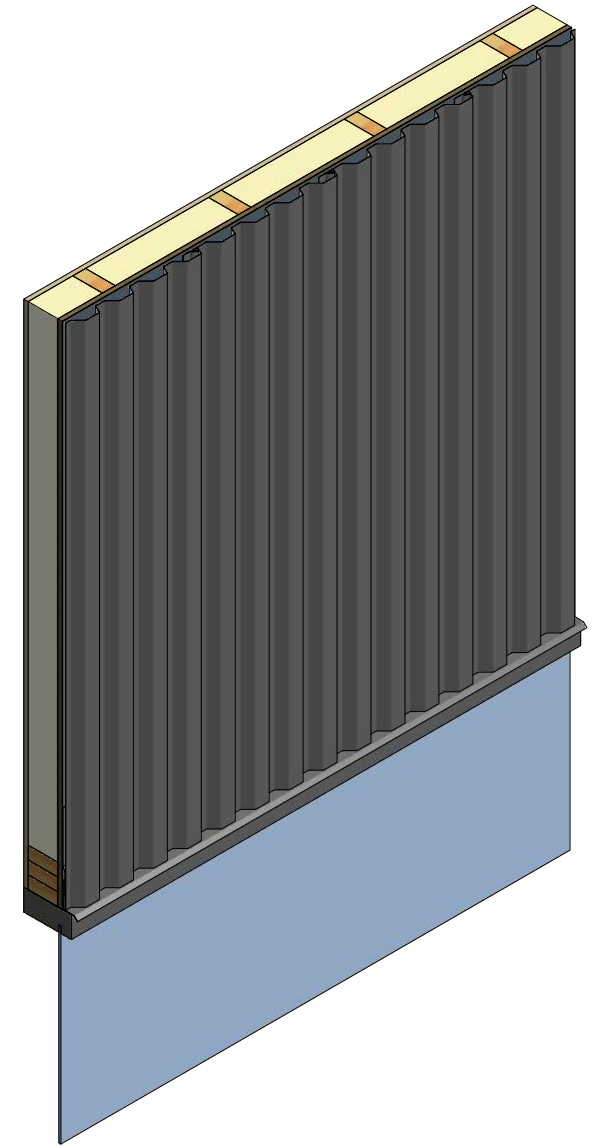
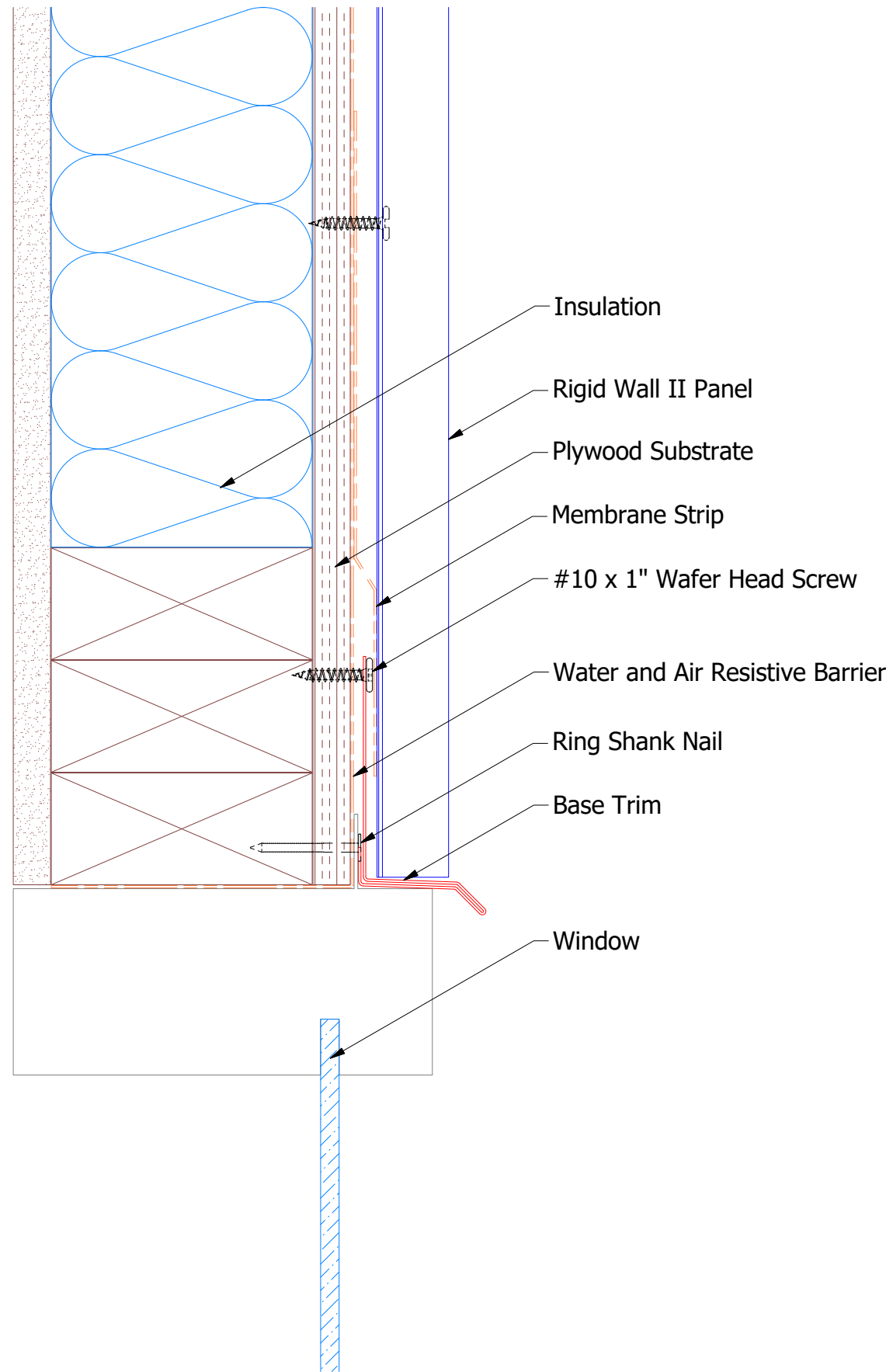
MCA690 - Head Angle Trim



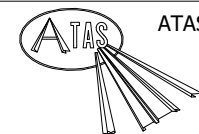
ATAS INTERNATIONAL, INC
 Allentown PA
 610-395-8445
 Mesa AZ
 480-558-7210

TITLE				Rigid Wall II Head Detail			
DWG. NO.		DR		DATE		7/11/2016	
APP		DMR		DATE		7/25/16	
MATERIAL				SH. SIZE		SCALE	
BY		APP		B		X:X	
REV. NO.	DATE	DESCRIPTION OF REVISION	BY	APP			

Vertical Panel



MCA661 - Base Trim

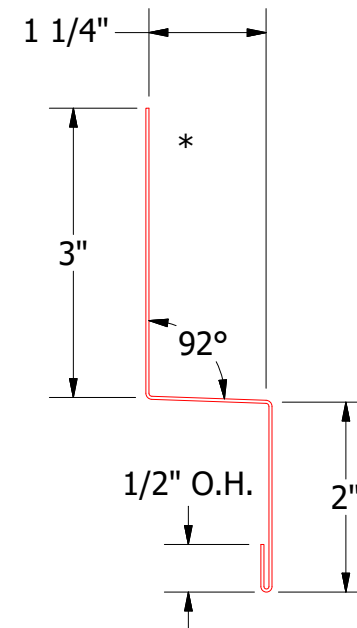
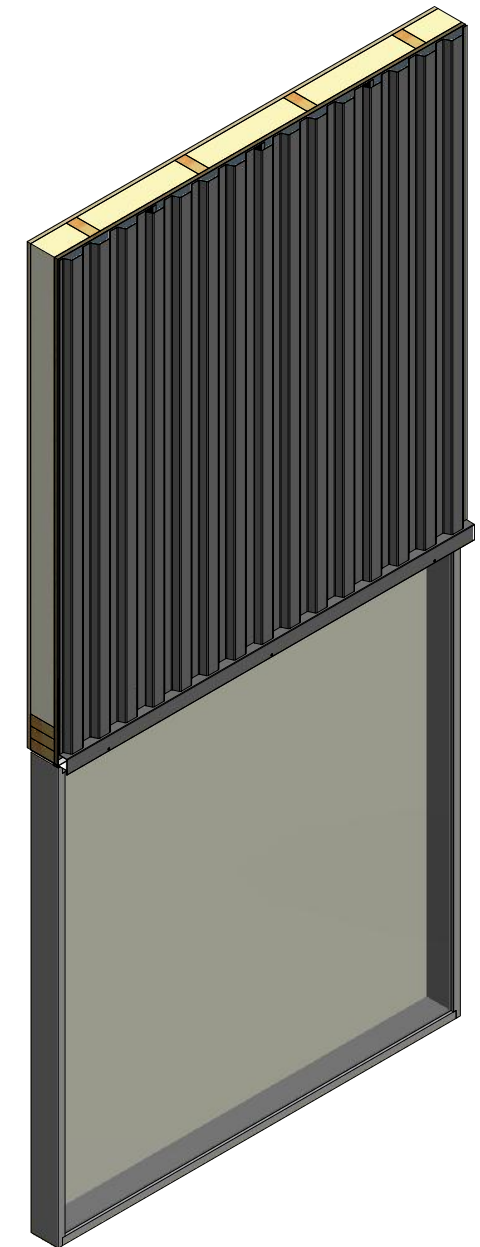
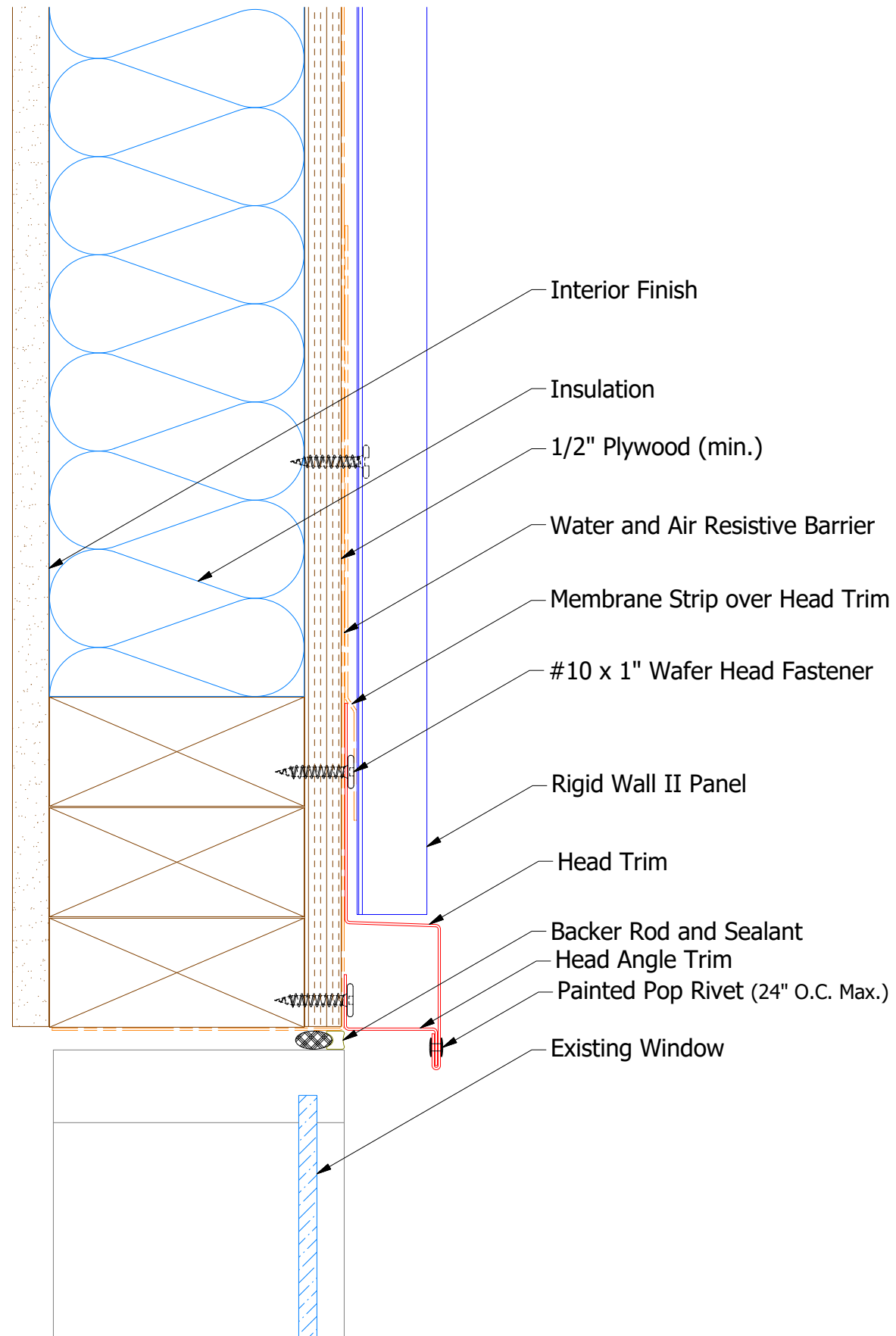


ATAS INTERNATIONAL, INC
 Allentown PA
 610-395-8445
 Mesa AZ
 480-558-7210

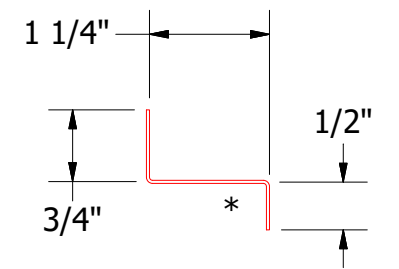
TITLE
Rigid Wall II Head Window Flange Detail

REV. NO.	DATE	DESCRIPTION OF REVISION	BY	APP	DWG. NO.	DR	JAC	DATE	8/1/2018
						APP		DATE	
					MATERIAL	SH. SIZE	B	SCALE	X:X

Vertical Panel



MCA550 - Head Trim



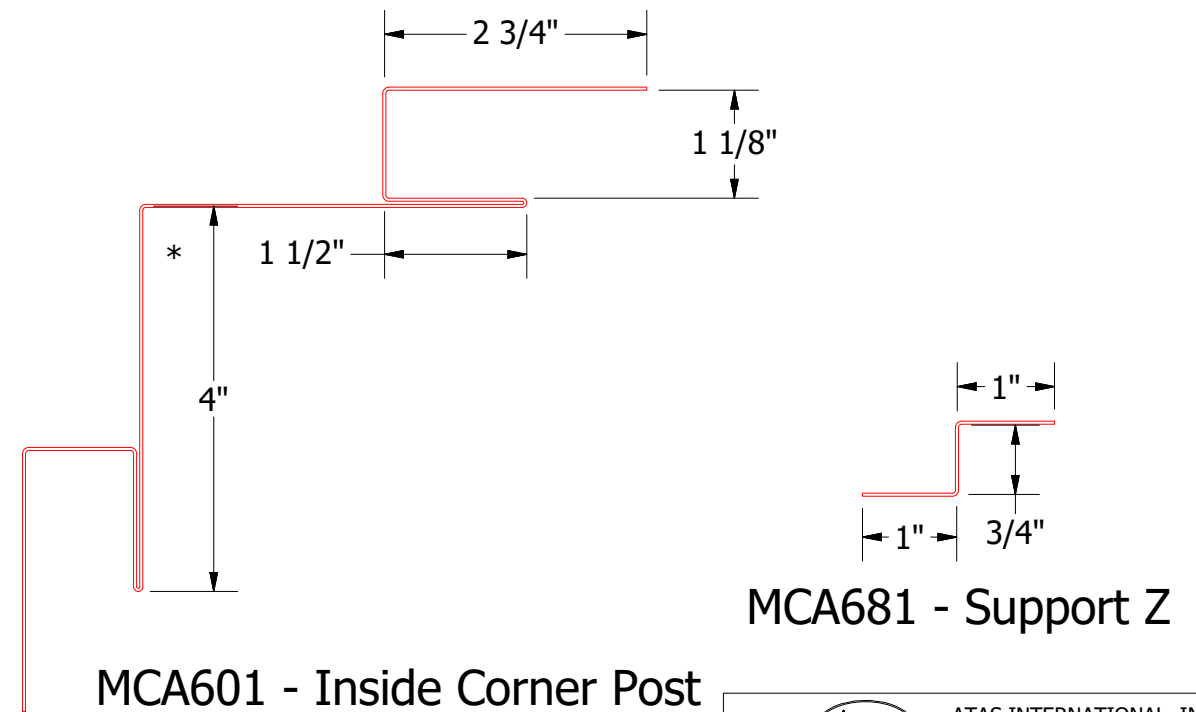
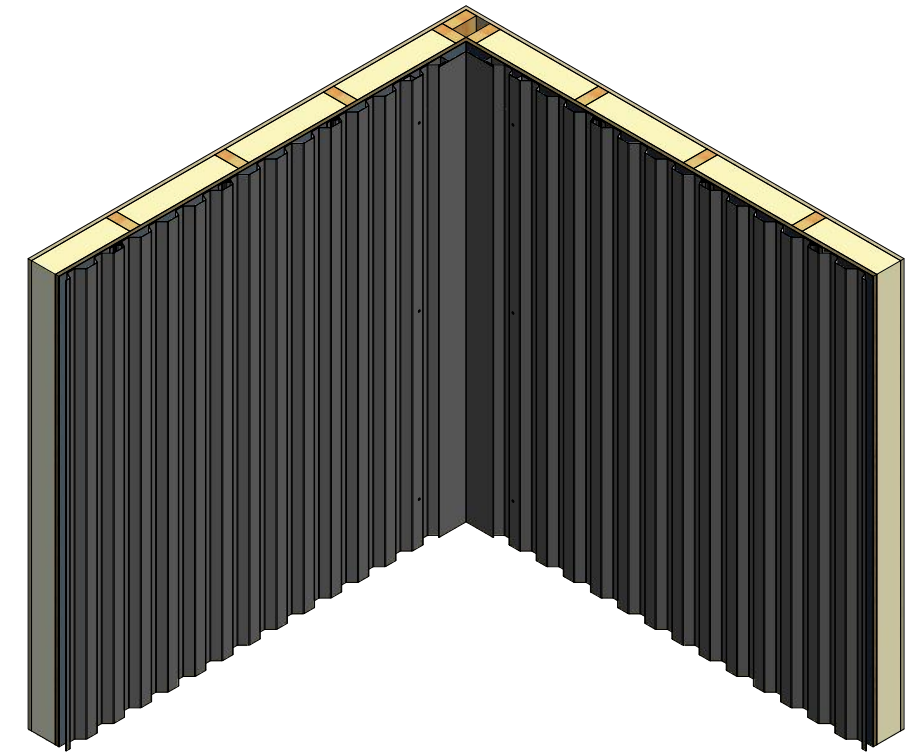
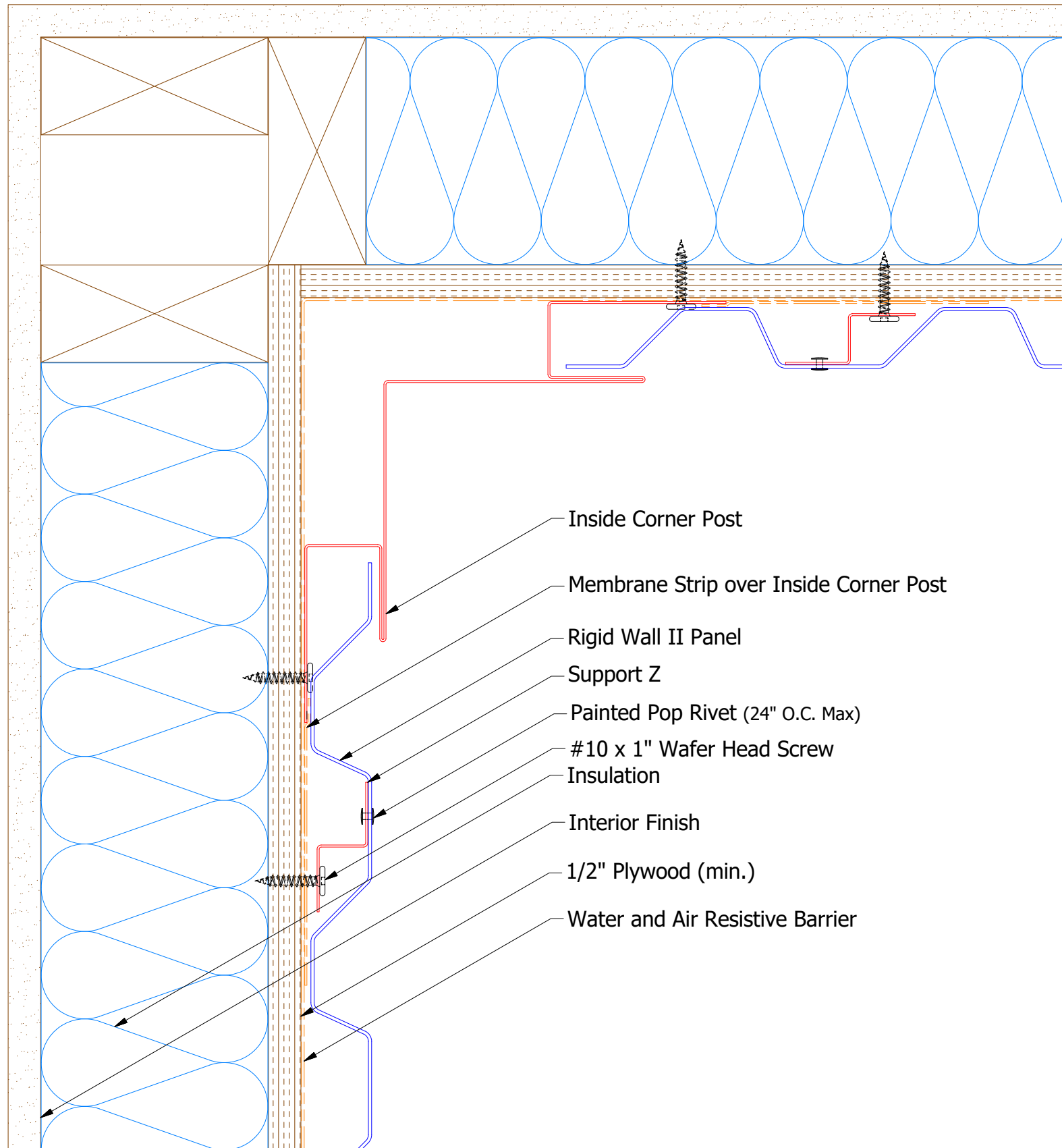
Head Support Z

ATAS
 ATAS INTERNATIONAL, INC
 Allentown PA
 610-395-8445
 Mesa AZ
 480-558-7210

TITLE Rigid Wall II Head (Existing Window) Detail			
DWG. NO.	DR	DATE	7/11/2016
APP	DMR	DATE	7/25/16
MATERIAL	DAS	SCALE	X:X
SH. SIZE	B		

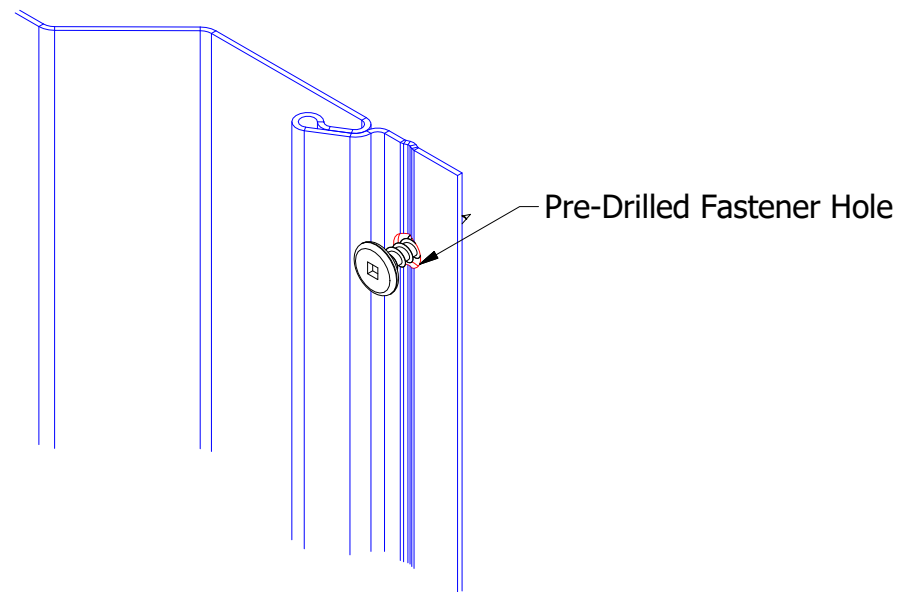
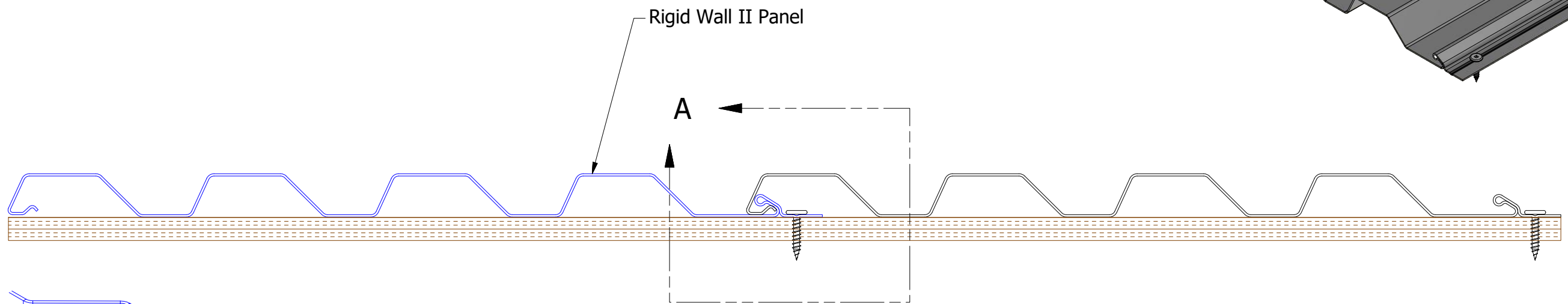
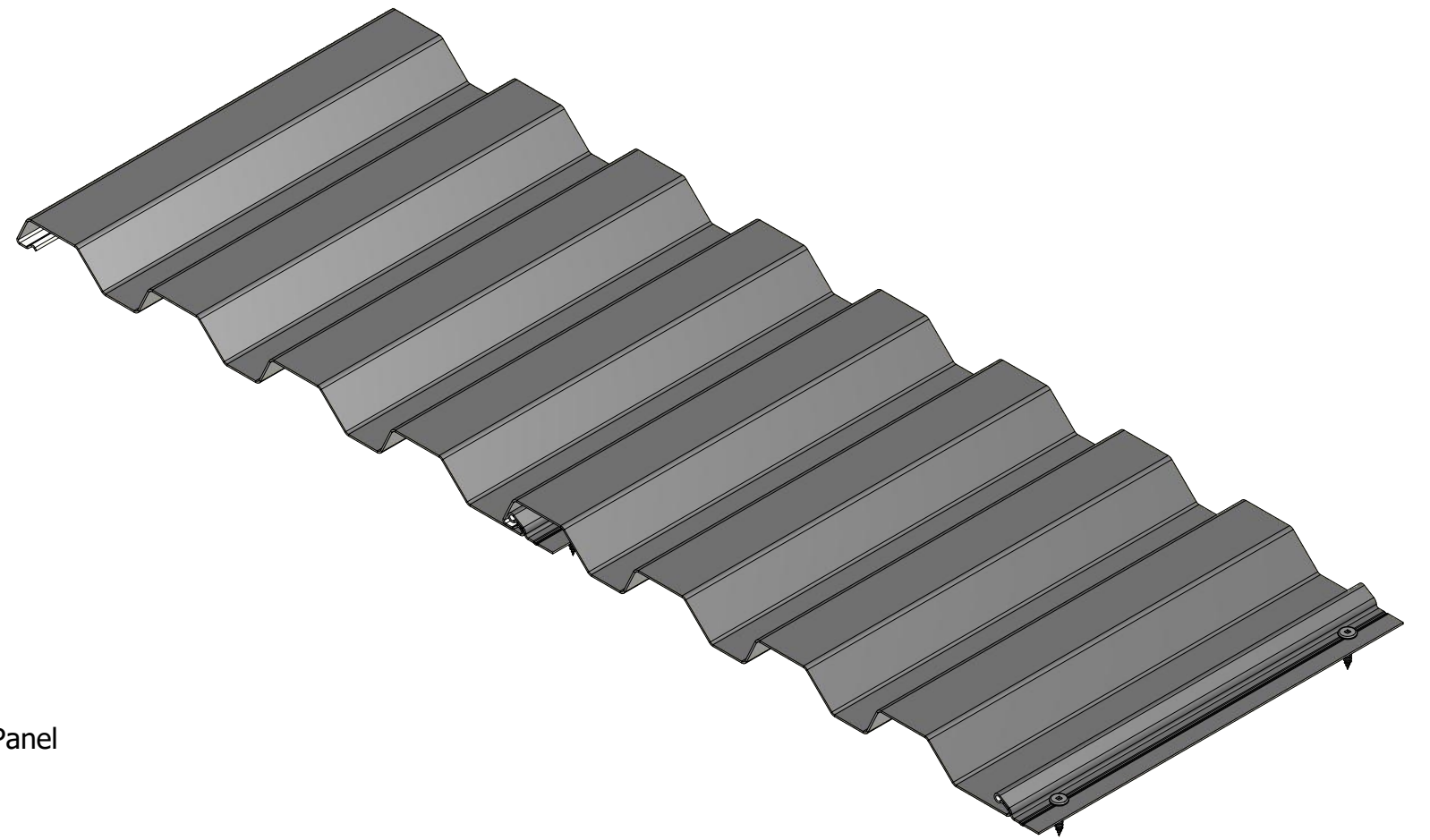
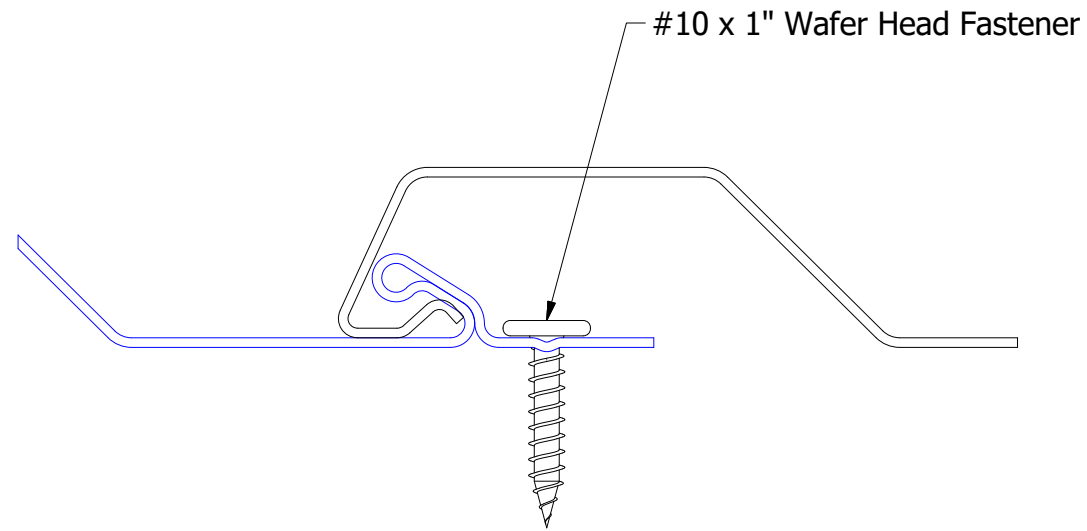
REV. NO.	DATE	DESCRIPTION OF REVISION	BY	APP

Vertical Panel

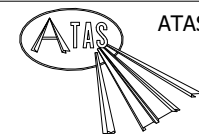


ATAS ATAS INTERNATIONAL, INC
 Allentown PA
 610-395-8445
 Mesa AZ
 480-558-7210

TITLE				Rigid Wall II Inside Corner Detail			
REV. NO.		DATE		DESCRIPTION OF REVISION		BY APP	
DWG. NO.		DR MBP		DATE 7/11/2016		APP DAS	
MATERIAL		SH. SIZE B		SCALE X:X		DATE 7/25/16	



Pre-Drill Fastener Holes for Panels Greater than 20'-0" in Length.

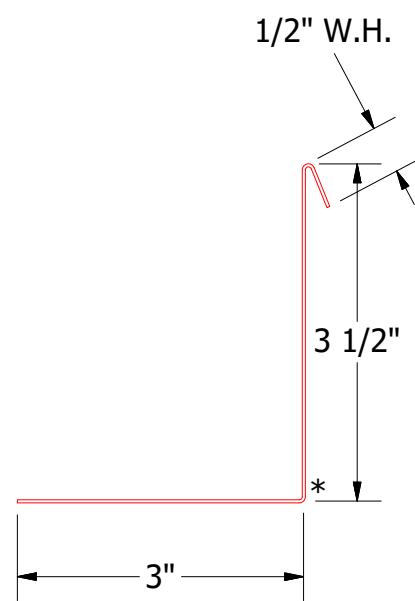
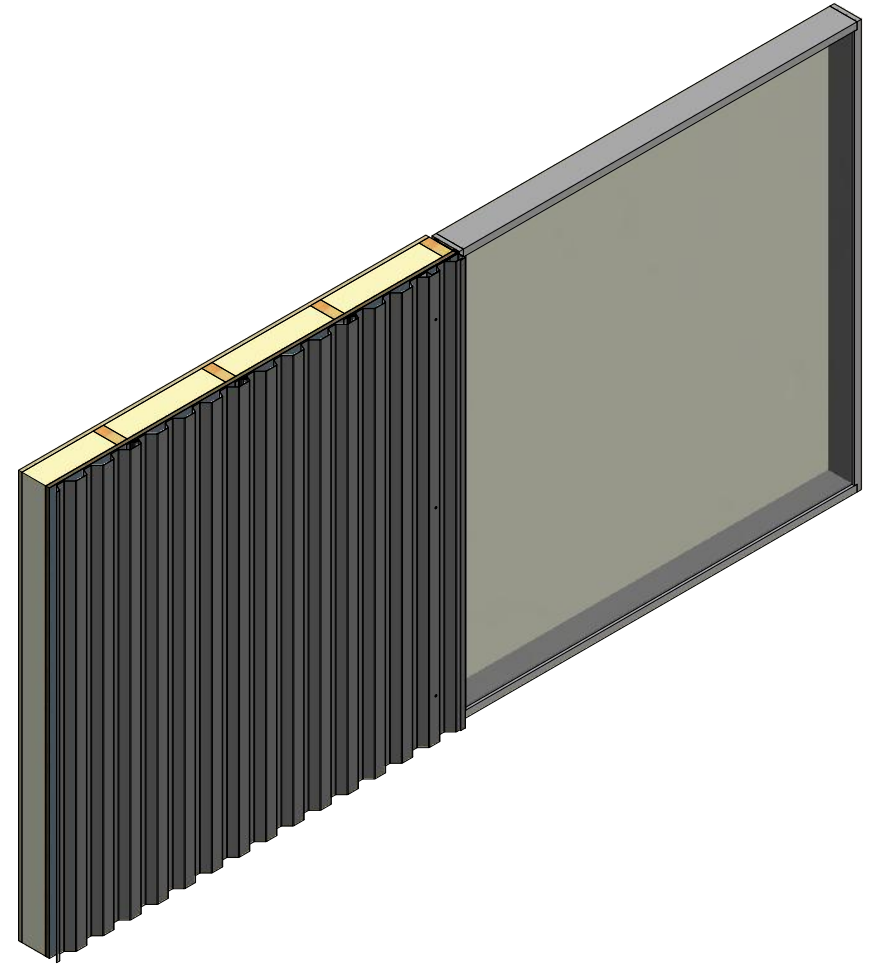
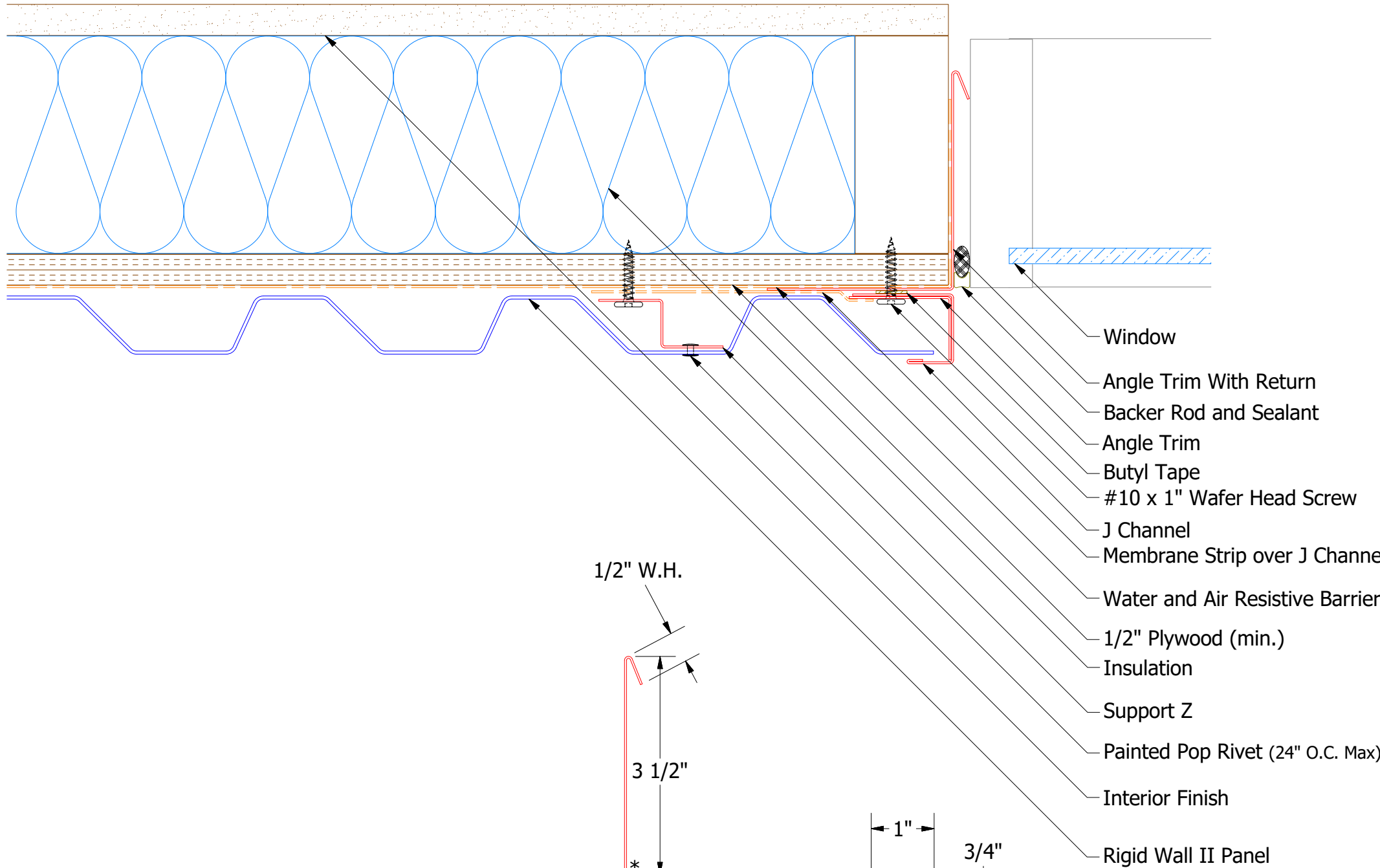


ATAS INTERNATIONAL, INC
 Allentown PA
 610-395-8445
 Mesa AZ
 480-558-7210

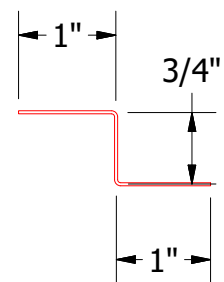
TITLE Rigid Wall II Interlock Panel Detail

REV. NO.	DATE	DESCRIPTION OF REVISION	BY	APP	DWG. NO.	DR	DATE
						DMR	10/5/2016
					MATERIAL	APP	DATE
						SH. SIZE	B SCALE X:X

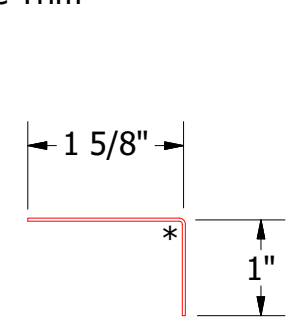
Vertical Panel



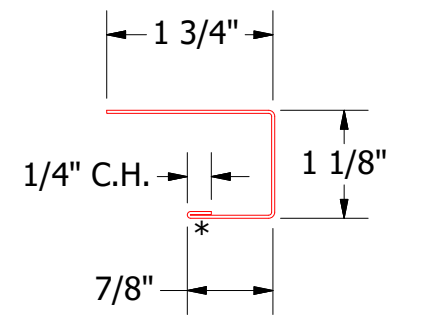
MCA683 - Angle Trim Without Return



MCA681 - Support Z



MCA680 - Angle Trim

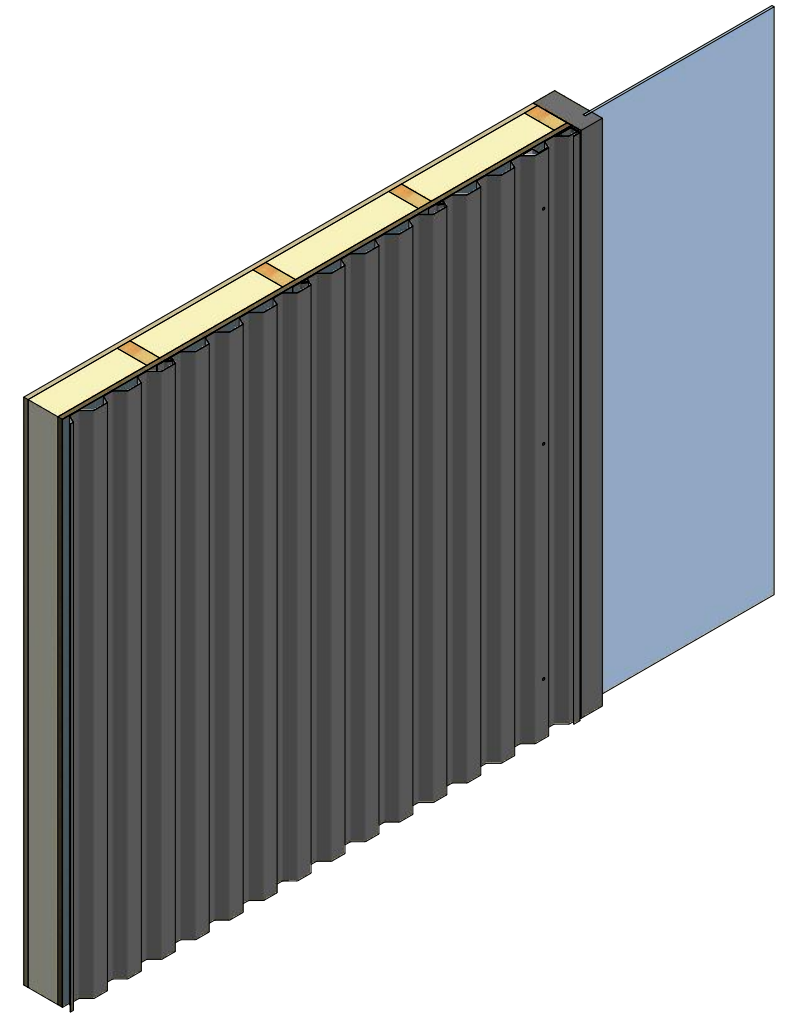
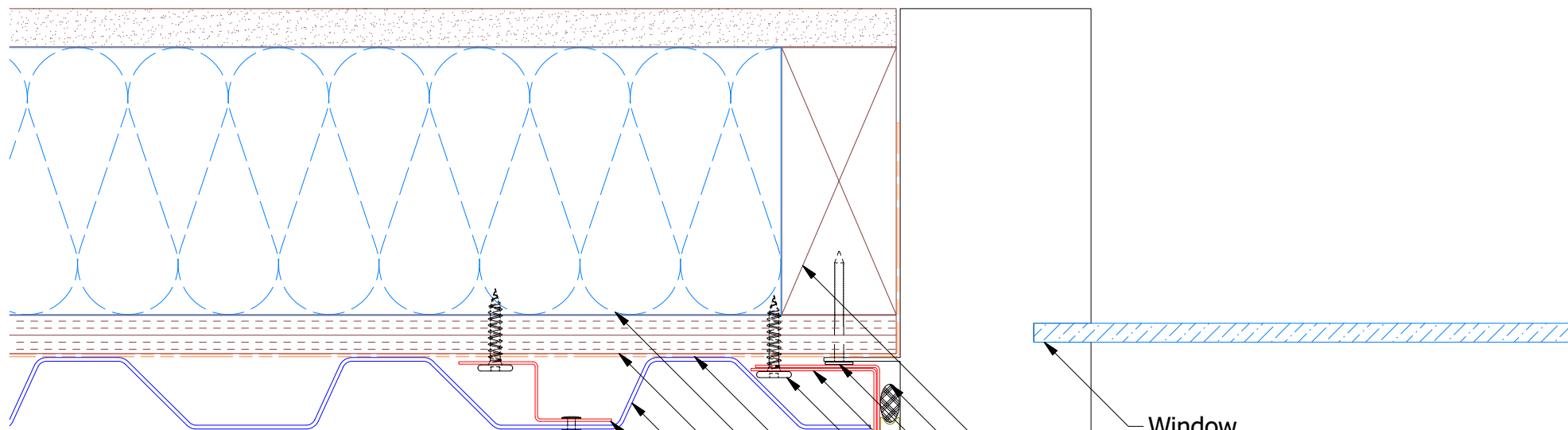


MCA118 - J Channel

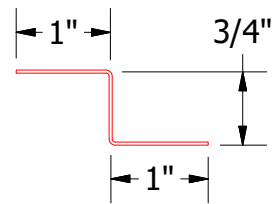
REV. NO.	DATE	DESCRIPTION OF REVISION	BY	APP

TITLE		Rigid Wall II Jamb Detail		
DWG. NO.	DR	DMR	DATE	7/11/2016
MATERIAL	APP	DAS	DATE	7/25/16
SH. SIZE	B	SCALE	X:X	

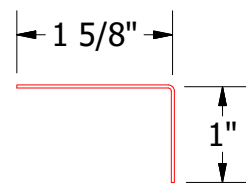
ATAS ATAS INTERNATIONAL, INC
 Allentown PA
 610-395-8445
 Mesa AZ
 480-558-7210



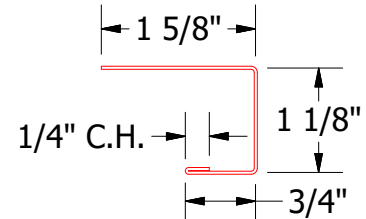
- Window
- Trim Board
- Backer Rod and Sealant
- Ring Shank Nail
- Angle Trim
- #10 x 1" Wafer Head Screw
- J Channel
- ATA - Guard
- Insulation
- Plywood Substrate
- Rigid Wall II Panel
- Support Z
- S.S. Painted Pop Rivet
24" O.C.



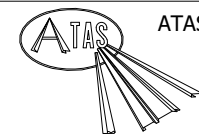
MCA681 - Support Z



MCA680 - Angle Trim



MCA118 - J Channel

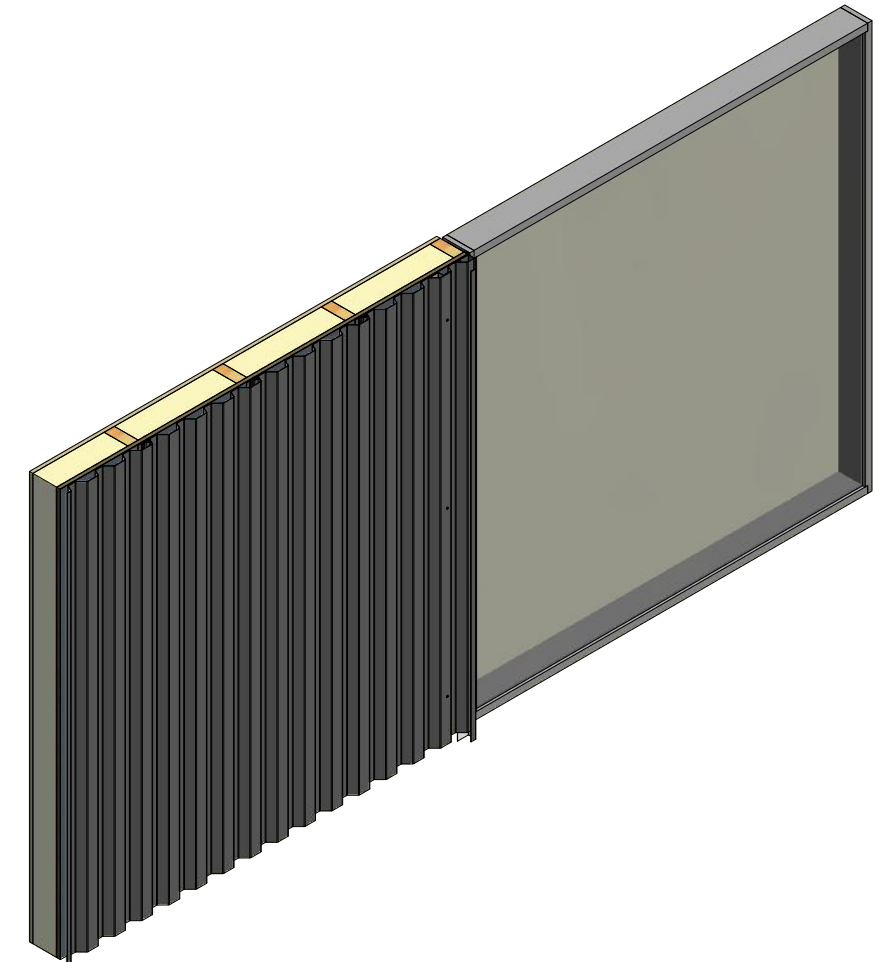
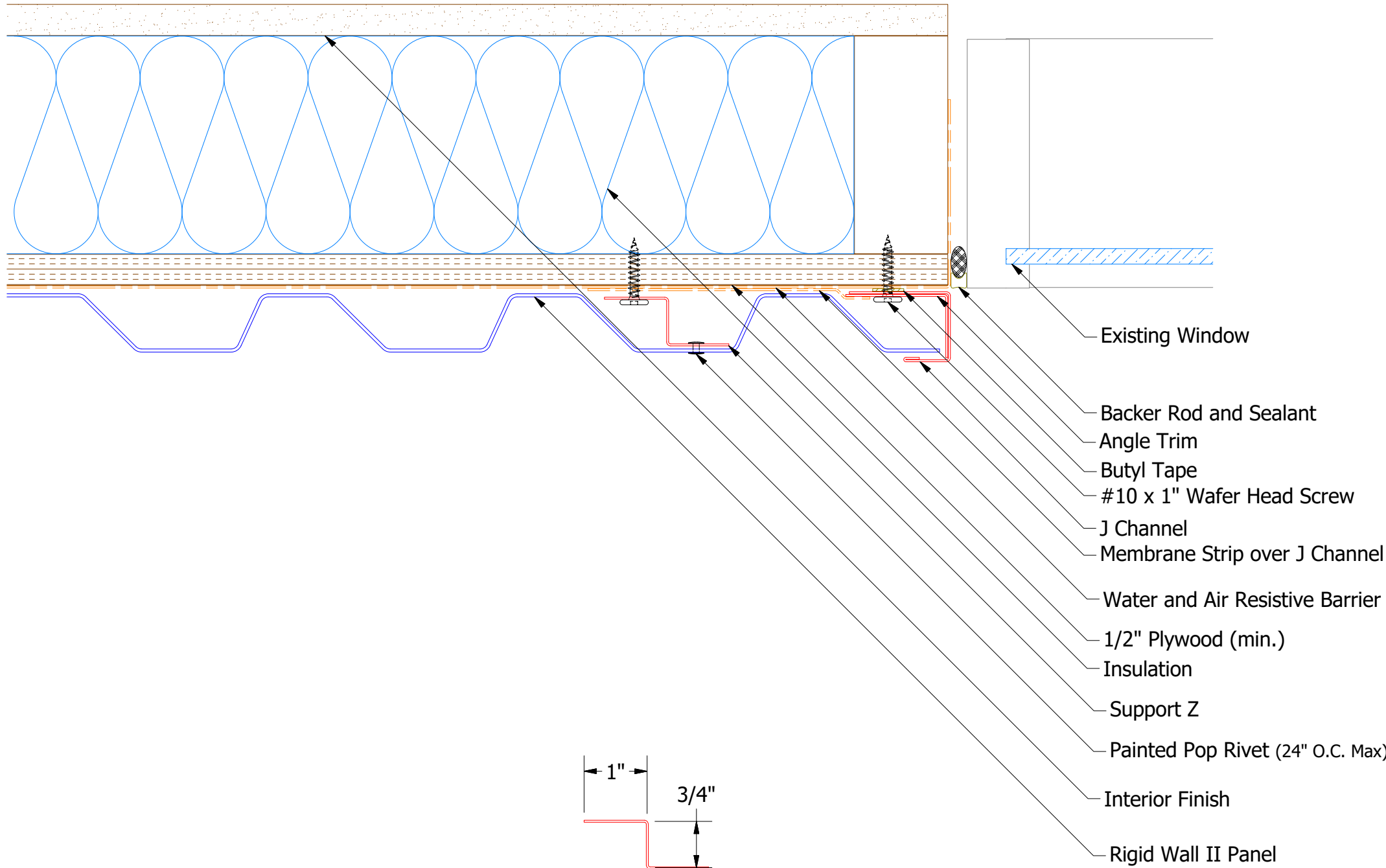


ATAS INTERNATIONAL, INC
 Allentown PA
 610-395-8445
 Mesa AZ
 480-558-7210

TITLE
Rigid Wall II Jamb Window Flange Detail

REV. NO.	DATE	DESCRIPTION OF REVISION	BY	APP	DWG. NO.	DR	JAC	DATE	8/2/2018
						APP		DATE	
					MATERIAL	SH. SIZE	B	SCALE	X:X

Vertical Panel



Existing Window

Backer Rod and Sealant

Angle Trim

Butyl Tape

#10 x 1" Wafer Head Screw

J Channel

Membrane Strip over J Channel and Angle Trim

Water and Air Resistive Barrier

1/2" Plywood (min.)

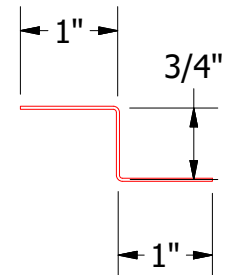
Insulation

Support Z

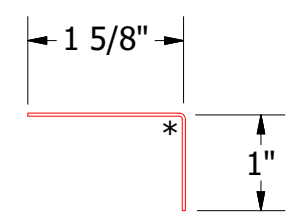
Painted Pop Rivet (24" O.C. Max)

Interior Finish

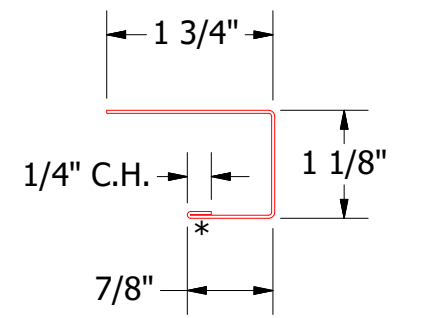
Rigid Wall II Panel



MCA681 - Support Z



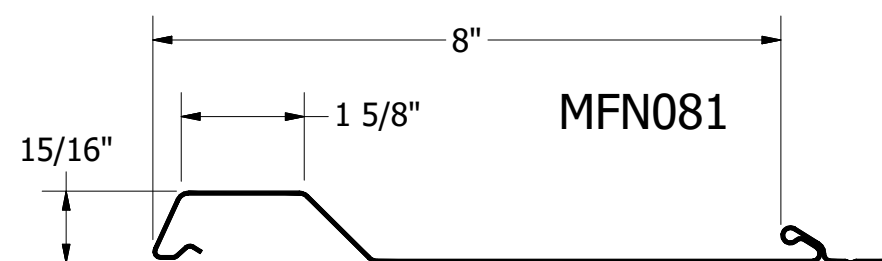
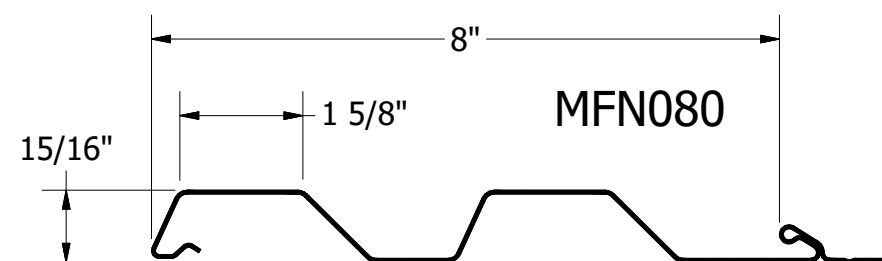
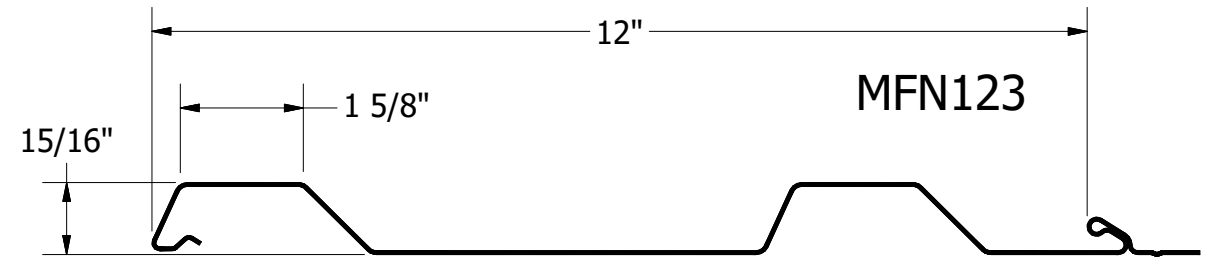
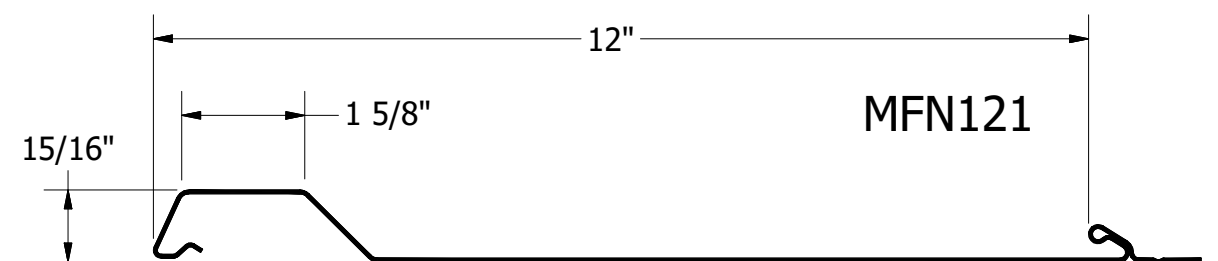
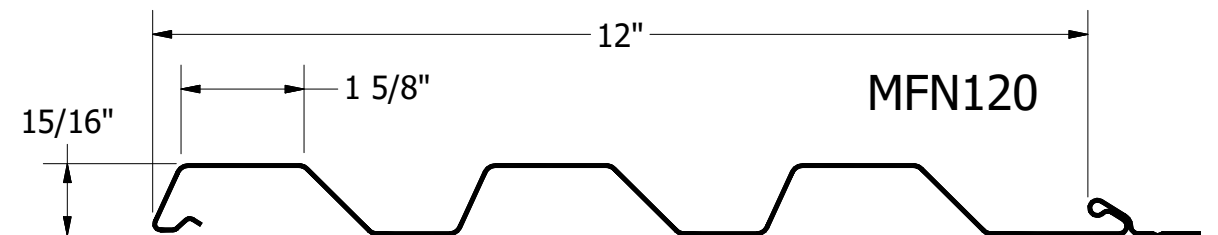
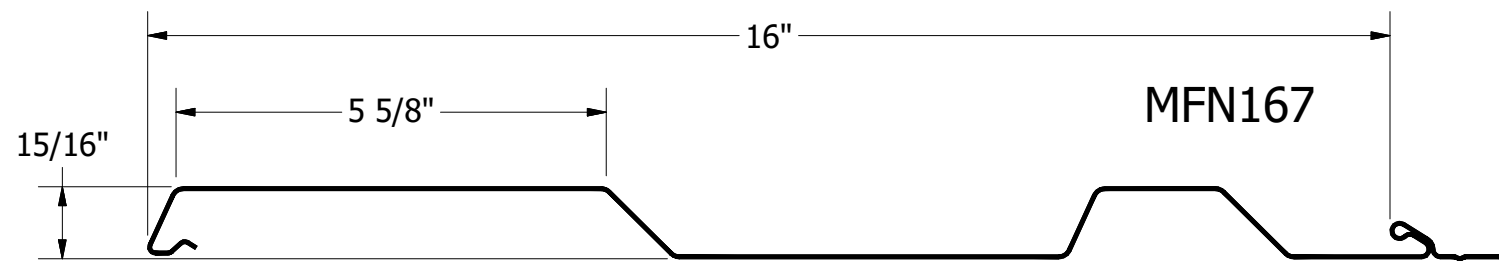
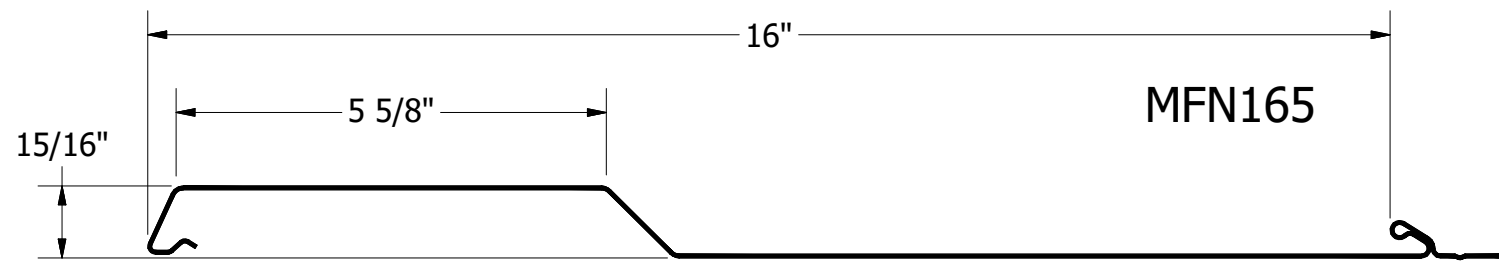
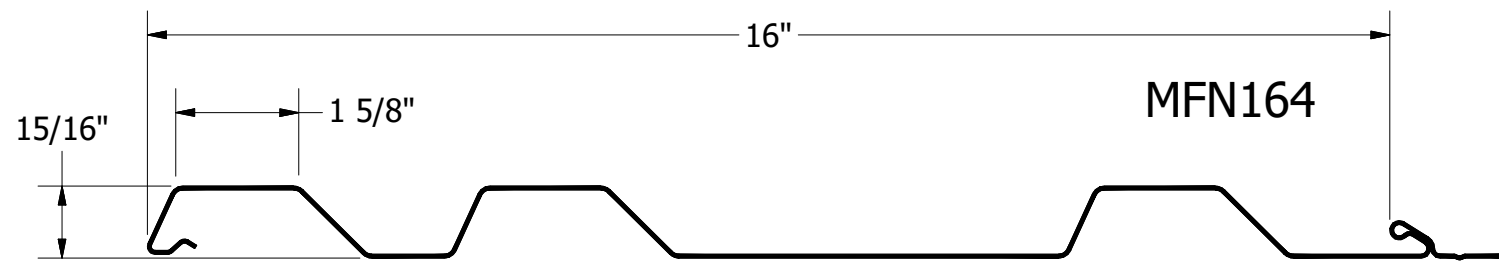
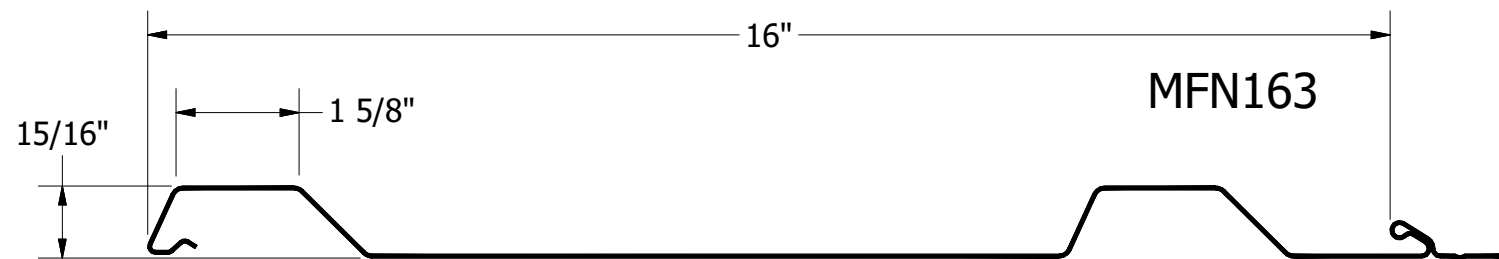
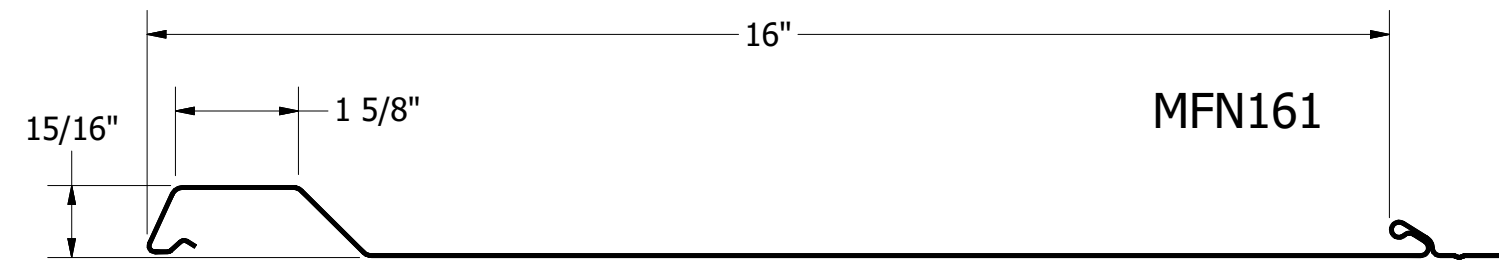
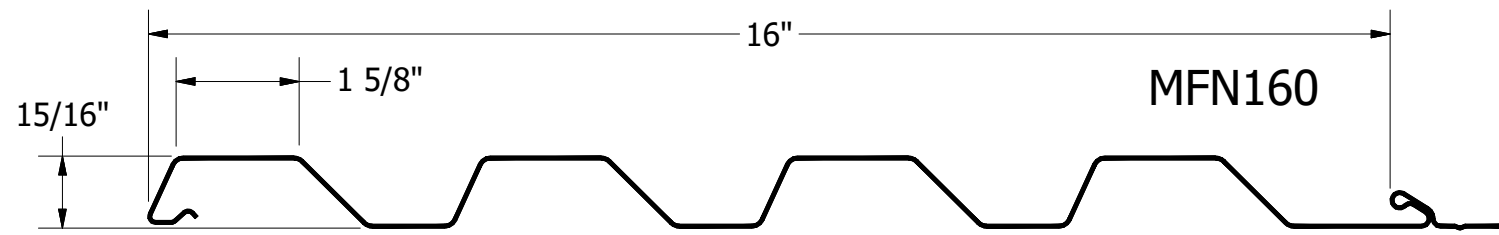
MCA680 - Angle Trim



MCA118 - J Channel

ATAS ATAS INTERNATIONAL, INC
 Allentown PA
 610-395-8445
 Mesa AZ
 480-558-7210

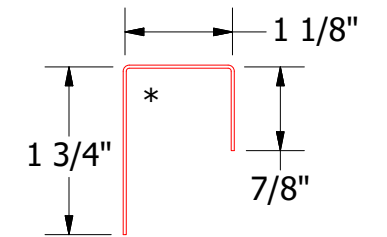
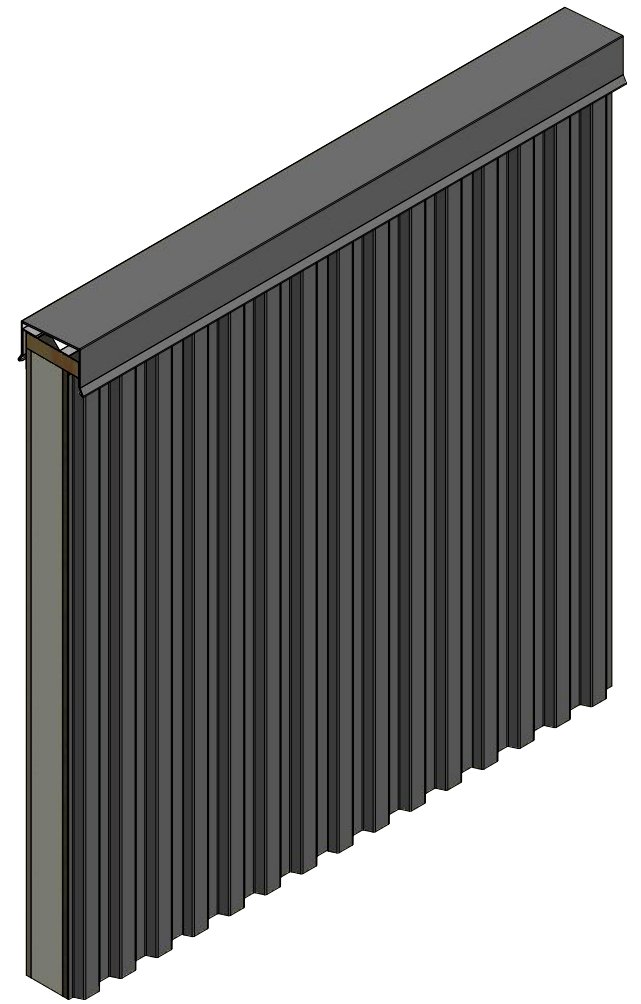
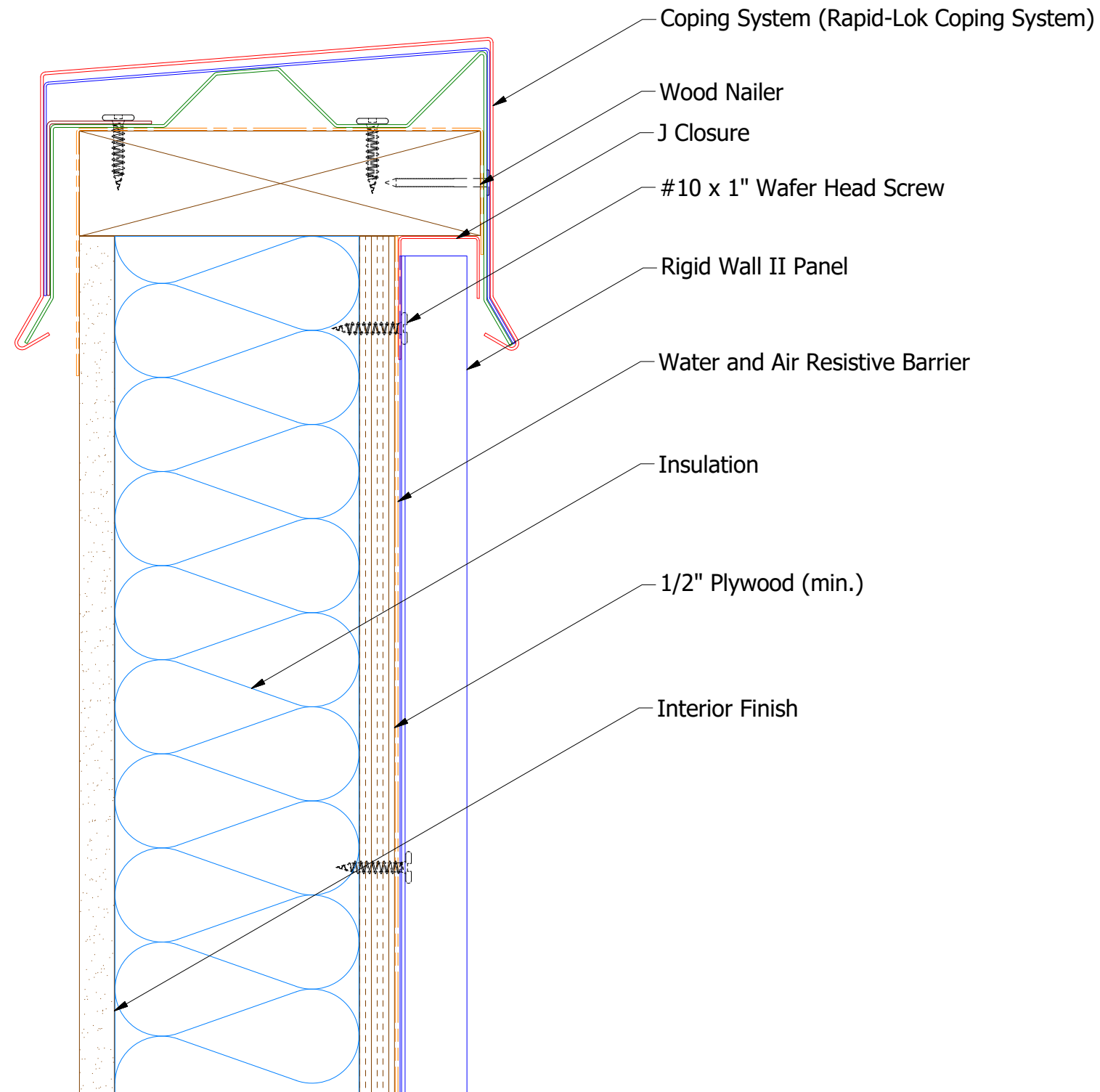
REV. NO.				DATE				DESCRIPTION OF REVISION				BY		APP	
TITLE												DR		DATE	
Rigid Wall II (Existing Window) Jamb Detail												DMR		7/11/2016	
DWG. NO.												APP		DATE	
MATERIAL												DAS		7/25/16	
SH. SIZE												B		SCALE	
												X:X			



TITLE			Rigid Wall II Panel Detail		
DWG. NO.	DR	DATE	DMR	DATE	7/11/2016
	APP	DAS	DAS	DATE	7/25/16
MATERIAL	SH. SIZE	B	SCALE	X:X	

REV. NO.	DATE	DESCRIPTION OF REVISION	BY	APP

Vertical Panel



MCA270 - J Closure

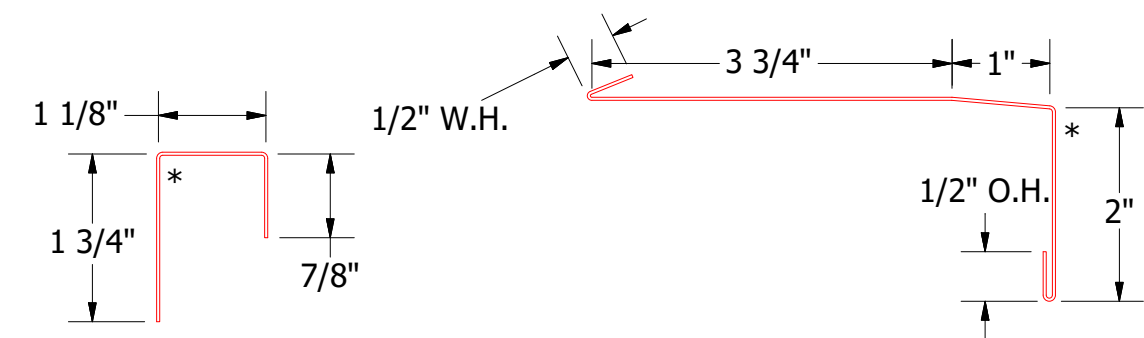
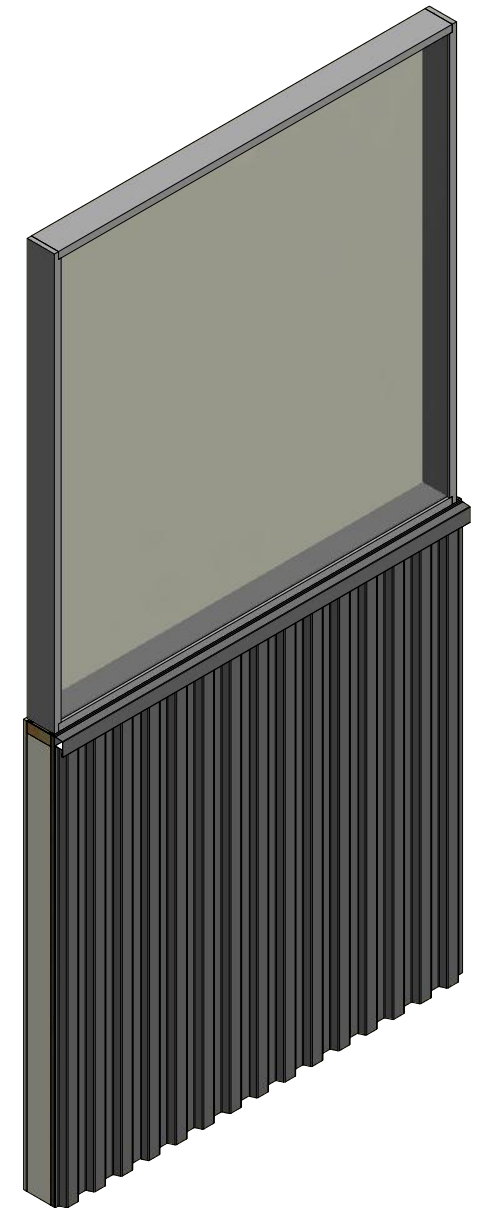
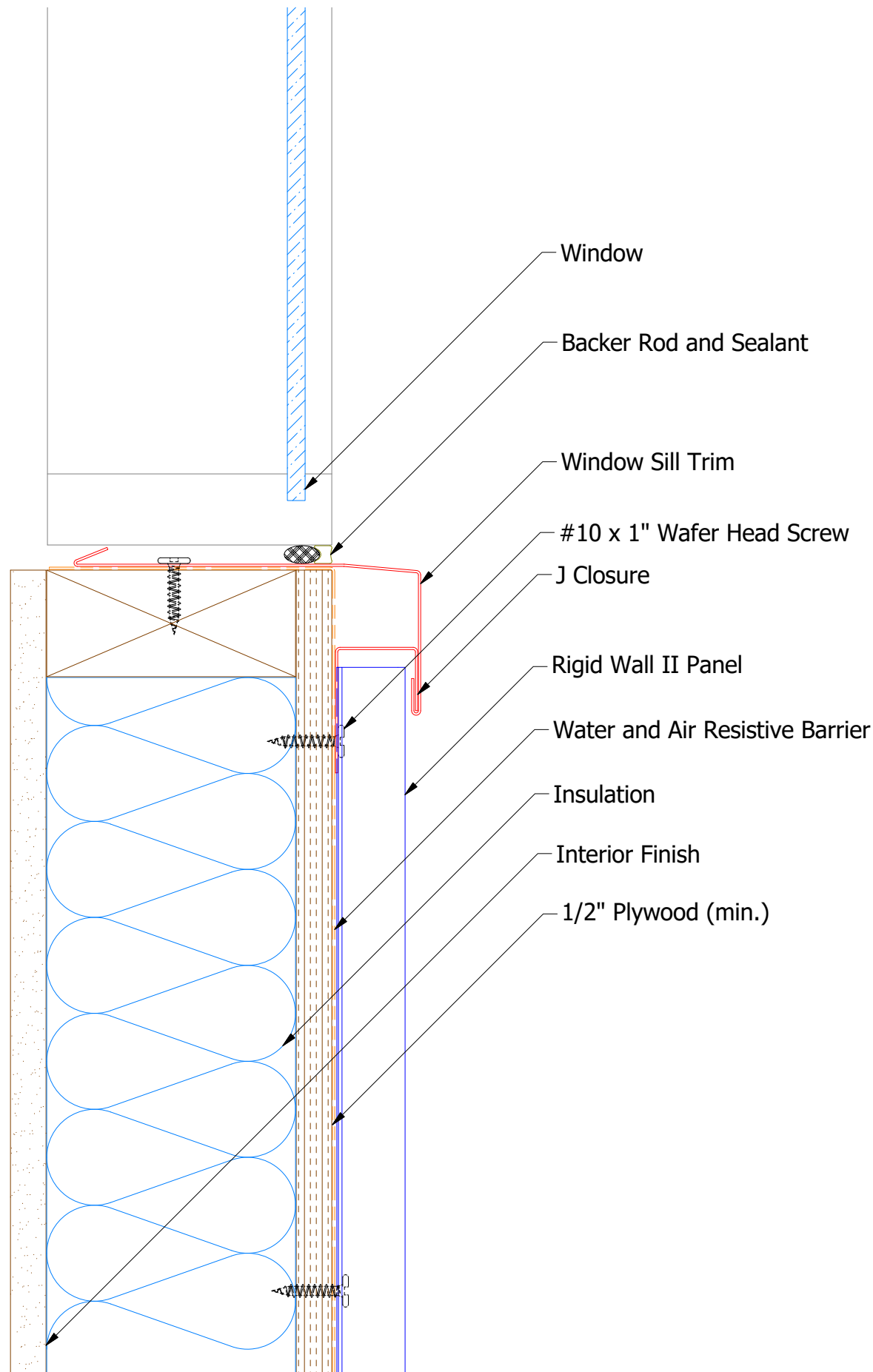


ATAS INTERNATIONAL, INC
 Allentown PA
 610-395-8445
 Mesa AZ
 480-558-7210

TITLE **Rigid Wall II Top of Wall Detail**

REV. NO.	DATE	DESCRIPTION OF REVISION	BY	APP	DWG. NO.	DR	DATE
						MBP	7/11/2016
						DAS	7/25/16
					MATERIAL	SH. SIZE	SCALE
						B	X:X

Vertical Panel



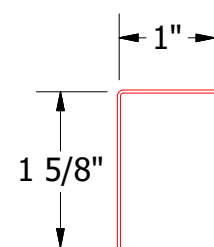
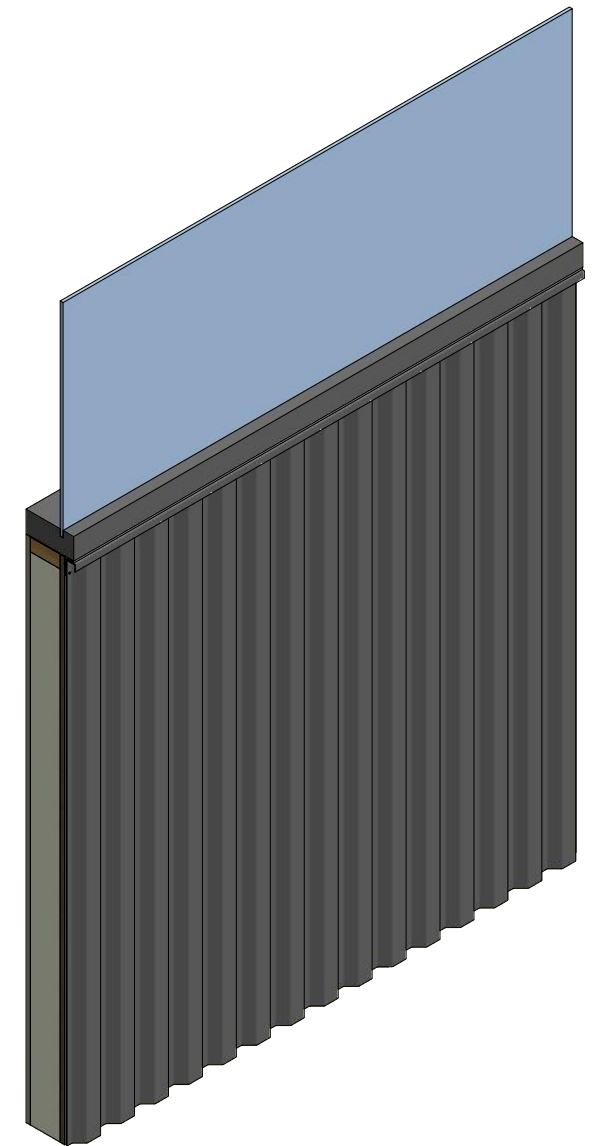
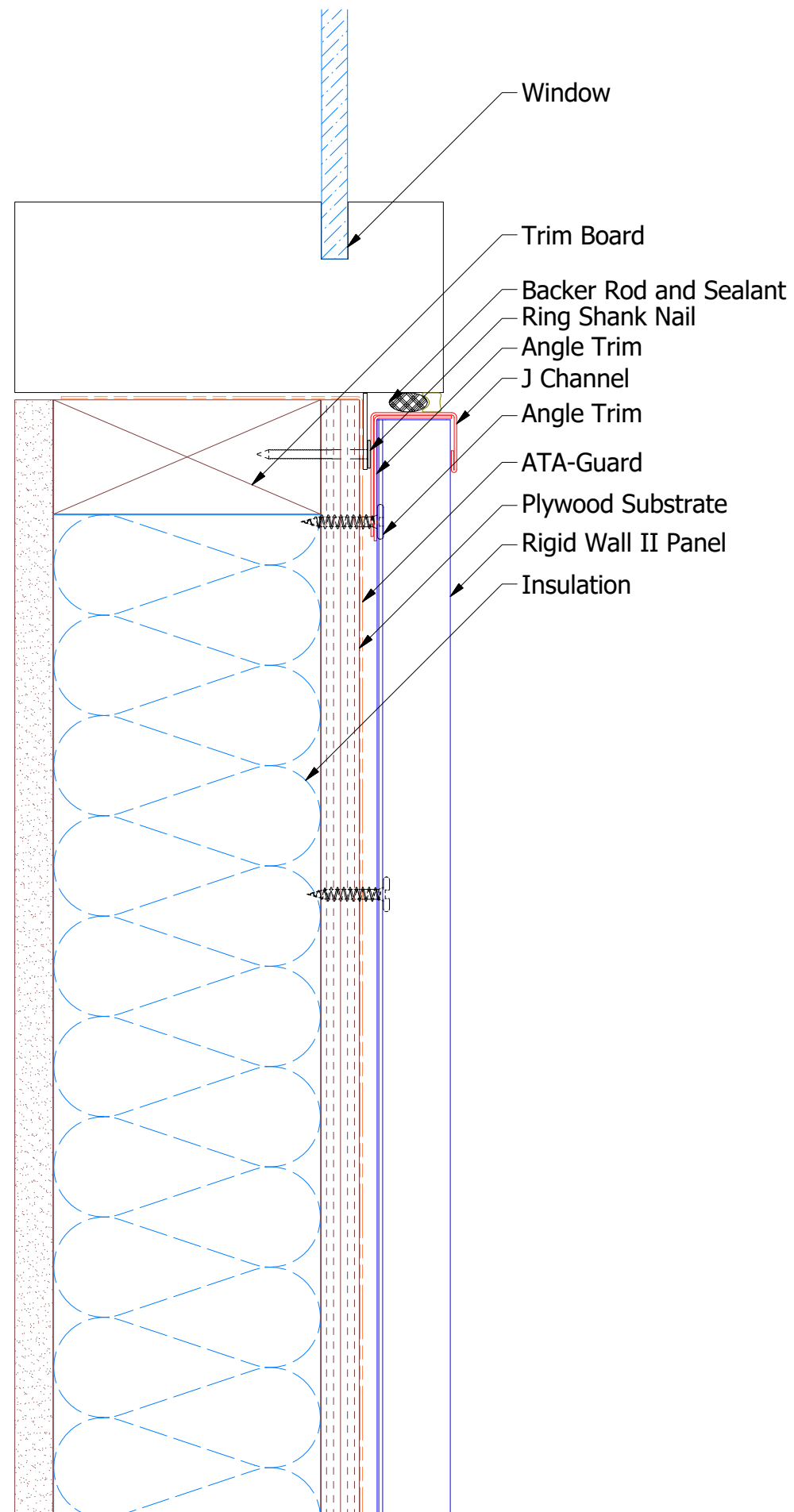
MCA270 - J Closure

MCA670 - Window Sill Trim

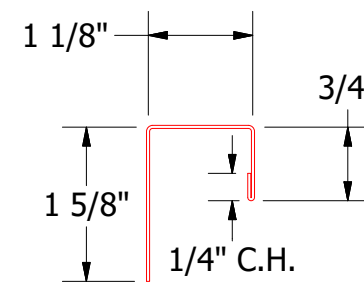
ATAS ATAS INTERNATIONAL, INC
 Allentown PA
 610-395-8445
 Mesa AZ
 480-558-7210

TITLE **Rigid Wall II Window Sill Detail**

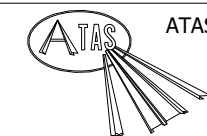
REV. NO.	DATE	DESCRIPTION OF REVISION	BY	APP	DWG. NO.	DR	DATE
						MBP	7/11/2016
						DAS	7/25/16
					MATERIAL	SH. SIZE	SCALE
						B	X:X



MCA680 - Angle Trim



MCA118 - J Channel



ATAS INTERNATIONAL, INC
 Allentown PA
 610-395-8445
 Mesa AZ
 480-558-7210

TITLE
Rigid Wall II Window Sill Flange Detail

DR	JAC	DATE	8/3/2018
APP		DATE	
SH. SIZE	B	SCALE	X:X

REV. NO.	DATE	DESCRIPTION OF REVISION	BY	APP

