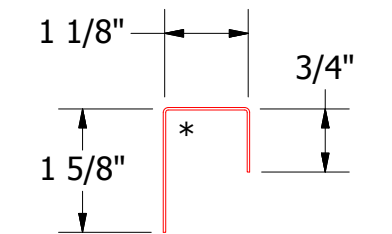
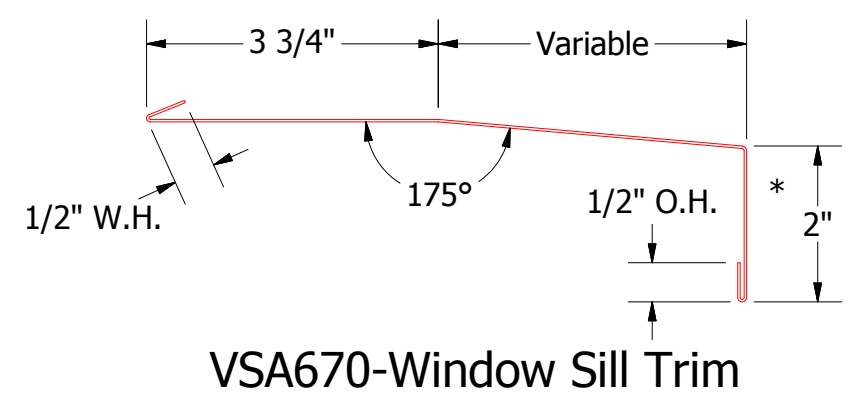
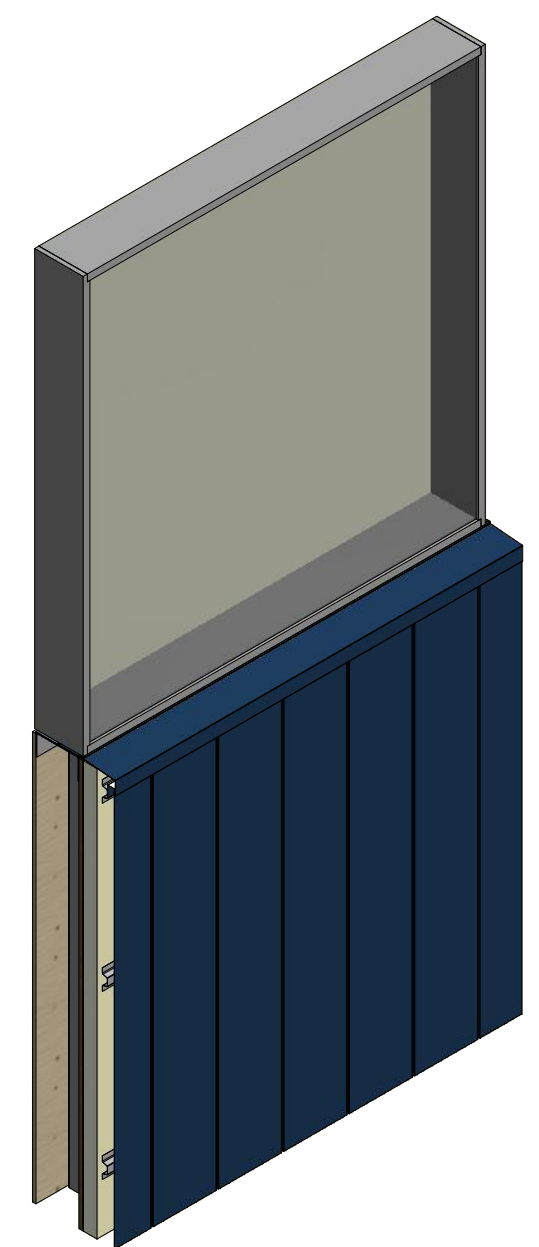
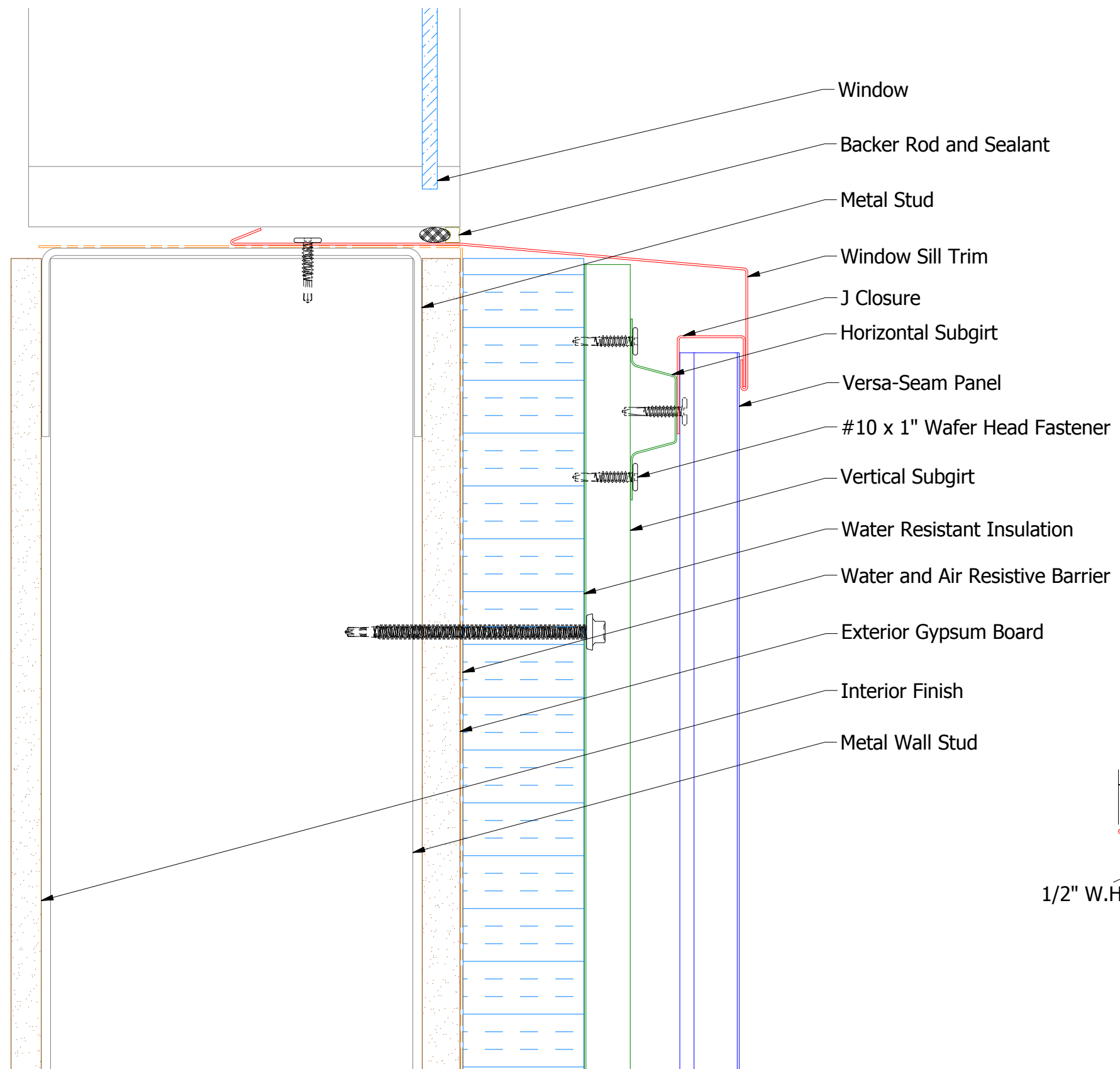


# Vertical Panel



**VSA270-J Closure**

2 Stage Method of Weather Proofing

**ATAS** ATAS INTERNATIONAL, INC  
 Allentown PA  
 610-395-8445  
 Mesa AZ  
 480-558-7210

TITLE				Versa-Seam Window Sill Detail			
DWG. NO.		DR		DATE		APP	
01		KRK		7/30/2014		DATE	
REV. NO.		DATE		DESCRIPTION OF REVISION		BY APP	
01		10/29/2018		Corrected SKU for VSA270-J Closure		KRK	
REV. NO.		DATE		DESCRIPTION OF REVISION		BY APP	
SH. SIZE		SCALE		X:X		B	