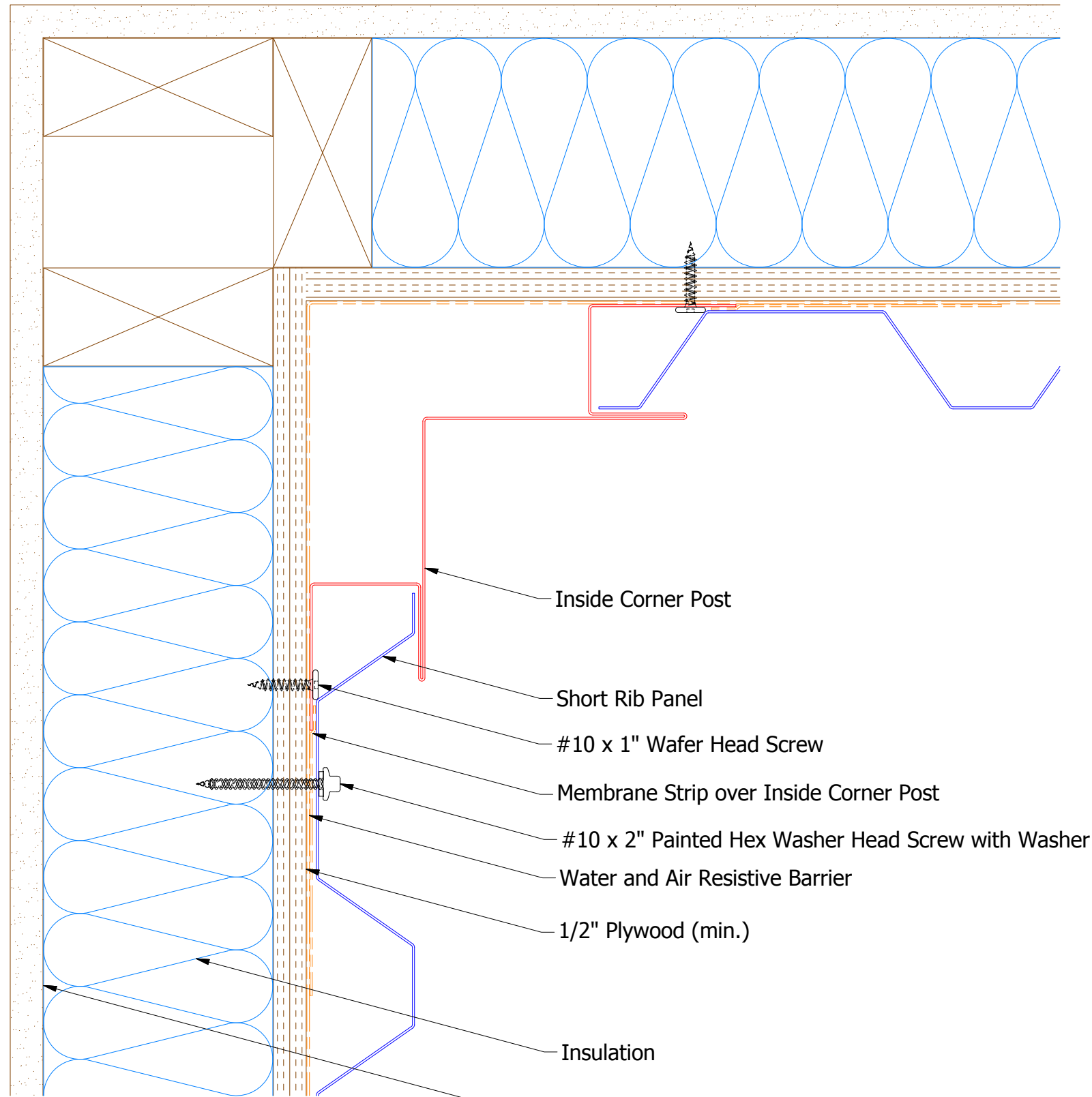
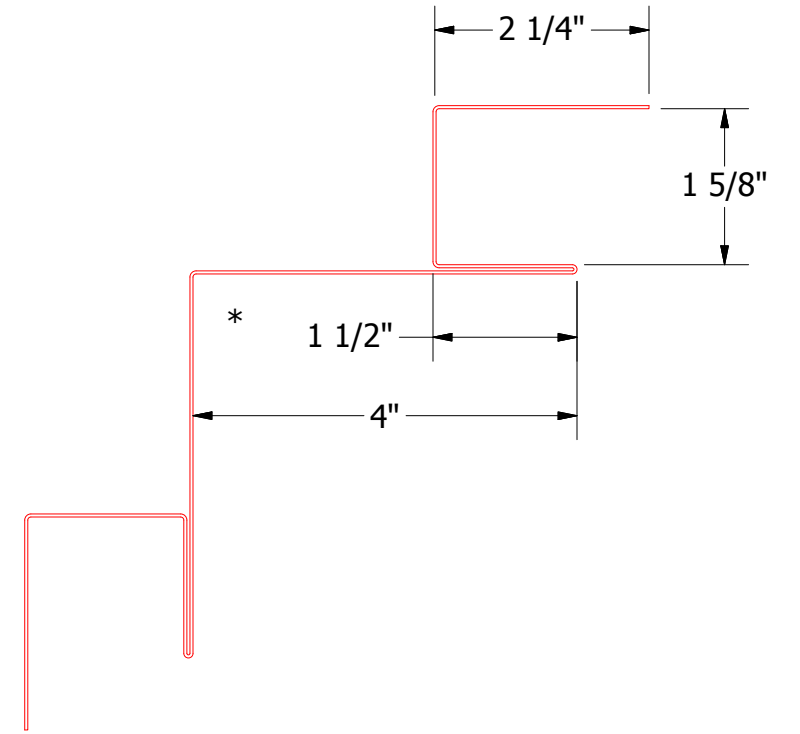
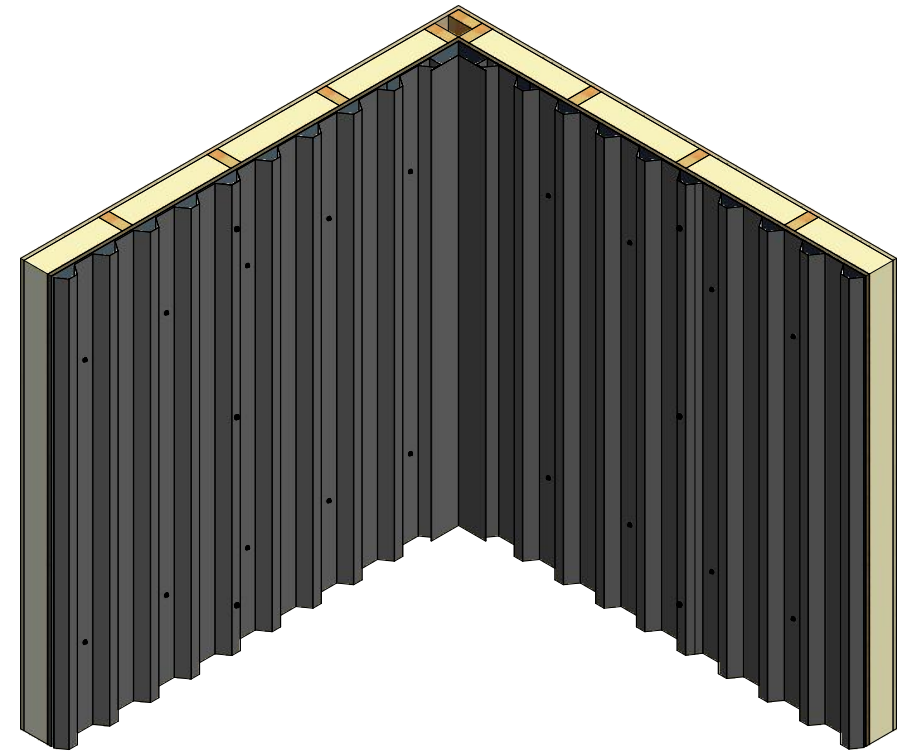


# Vertical Panel



- Inside Corner Post
- Short Rib Panel
- #10 x 1" Wafer Head Screw
- Membrane Strip over Inside Corner Post
- #10 x 2" Painted Hex Washer Head Screw with Washer
- Water and Air Resistive Barrier
- 1/2" Plywood (min.)
- Insulation
- Interior Finish



**BWA601 - Inside Corner Post**


**ATAS INTERNATIONAL, INC**  
 Allentown PA  
 610-395-8445  
 Mesa AZ  
 480-558-7210

TITLE				Belvedere Short Rib Inside Corner Detail			
DWG. NO.		DR		DATE		DATE	
		KRK		6/12/2015			
MATERIAL		APP		DATE		DATE	
		DAS		7/21/16			
REV. NO.	DATE	DESCRIPTION OF REVISION	BY	APP	SH. SIZE	SCALE	
					B	X:X	