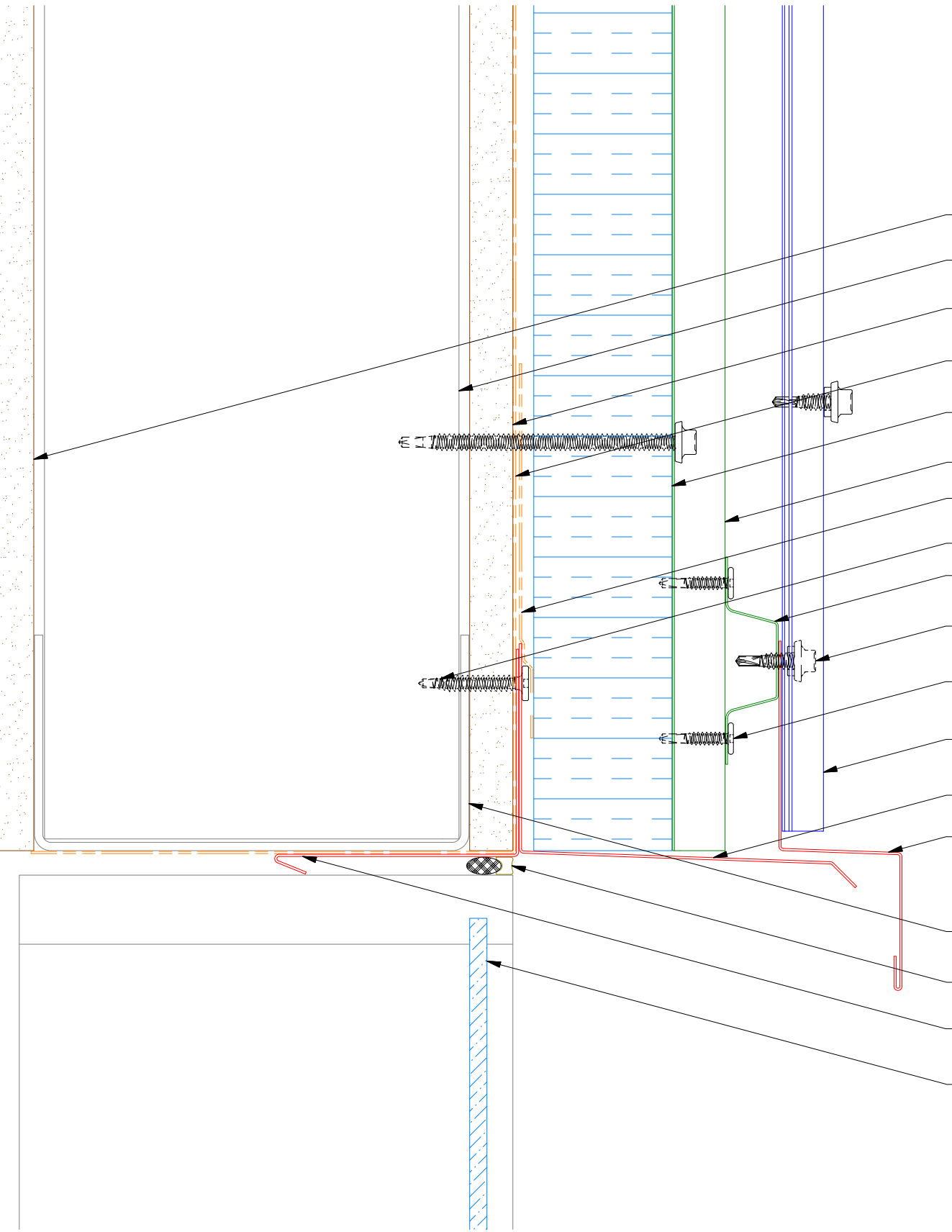
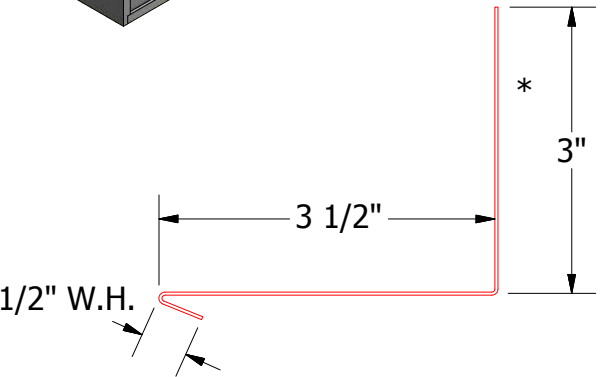
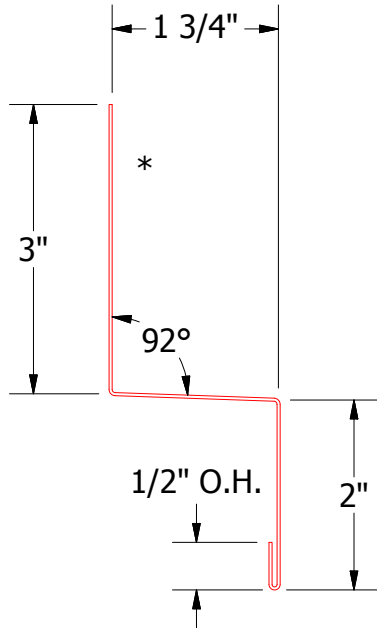
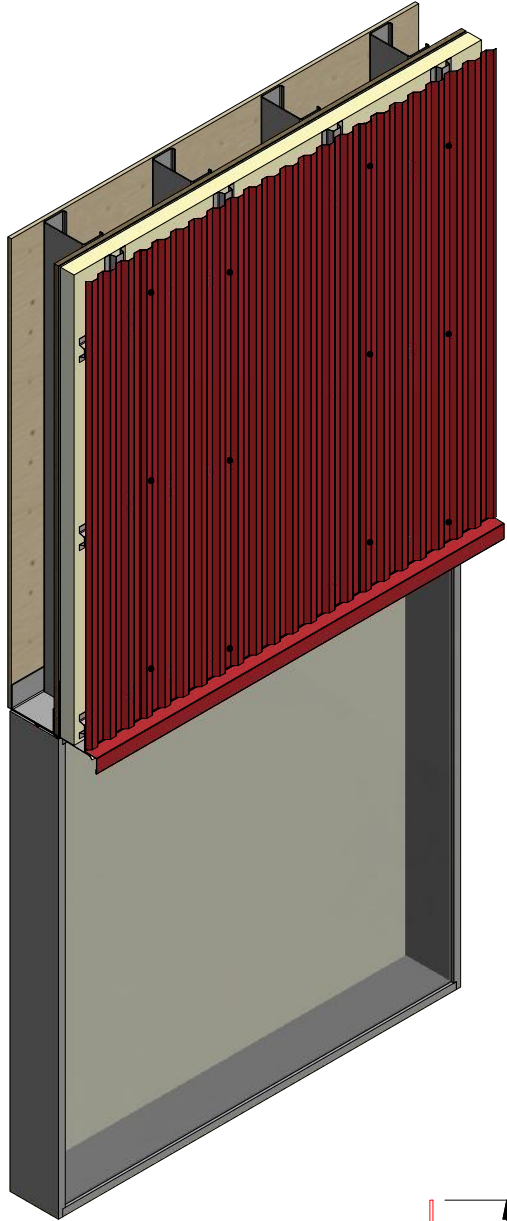
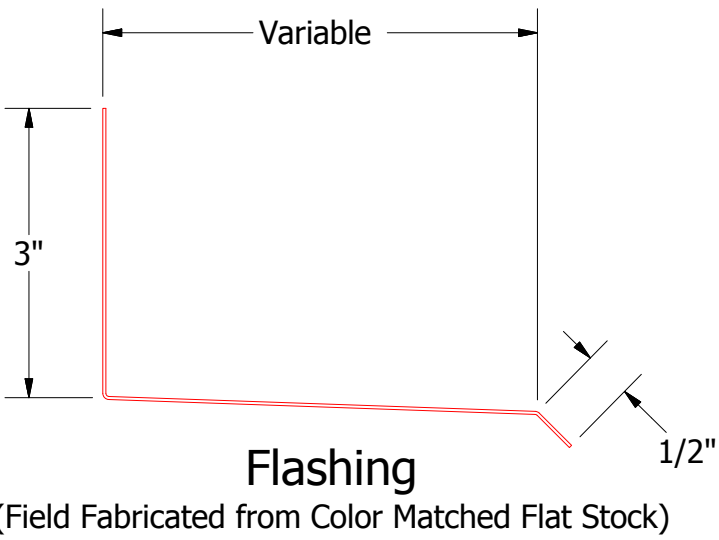


Vertical Panel




- Interior Finish
- Metal Wall Stud
- Exterior Gypsum Board
- Water and Air Resistive Barrier
- Water Resistant Insulation
- Vertical Subgirt
- Membrane Strip over Fastener Flashing
- Fastener Flashing (by others)
- Horizontal Subgirt
- #14 x 7/8" Painted Hex Washer Head Fastener with Washer
- #10 x 1" Wafer Head Fastener
- Grand C Panel
- Flashing by others
- Head Trim
- Metal Stud
- Backer Rod and Sealant
- Angle with Return
- Window



BGA550-Head Trim

BGA683-Angle with Return



ATAS INTERNATIONAL, INC  
Allentown PA  
610-395-8445  
Mesa AZ  
480-558-7210

TITLE Grand C Panel Open Head Detail			
DWG. NO.		DR DMR	DATE 9/13/2016
APP		DATE	
MATERIAL		SH. SIZE B	SCALE X:X

REV. NO.	DATE	DESCRIPTION OF REVISION	BY	APP