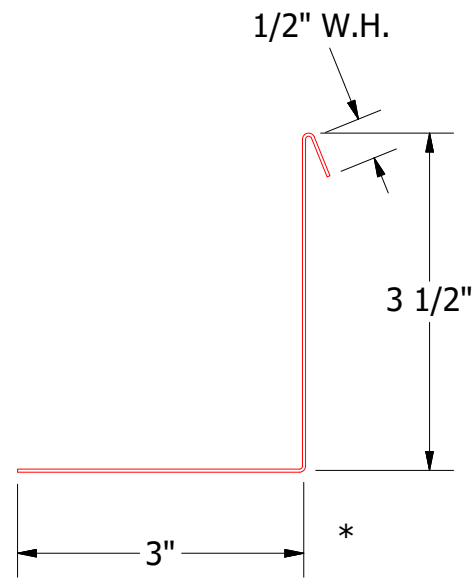
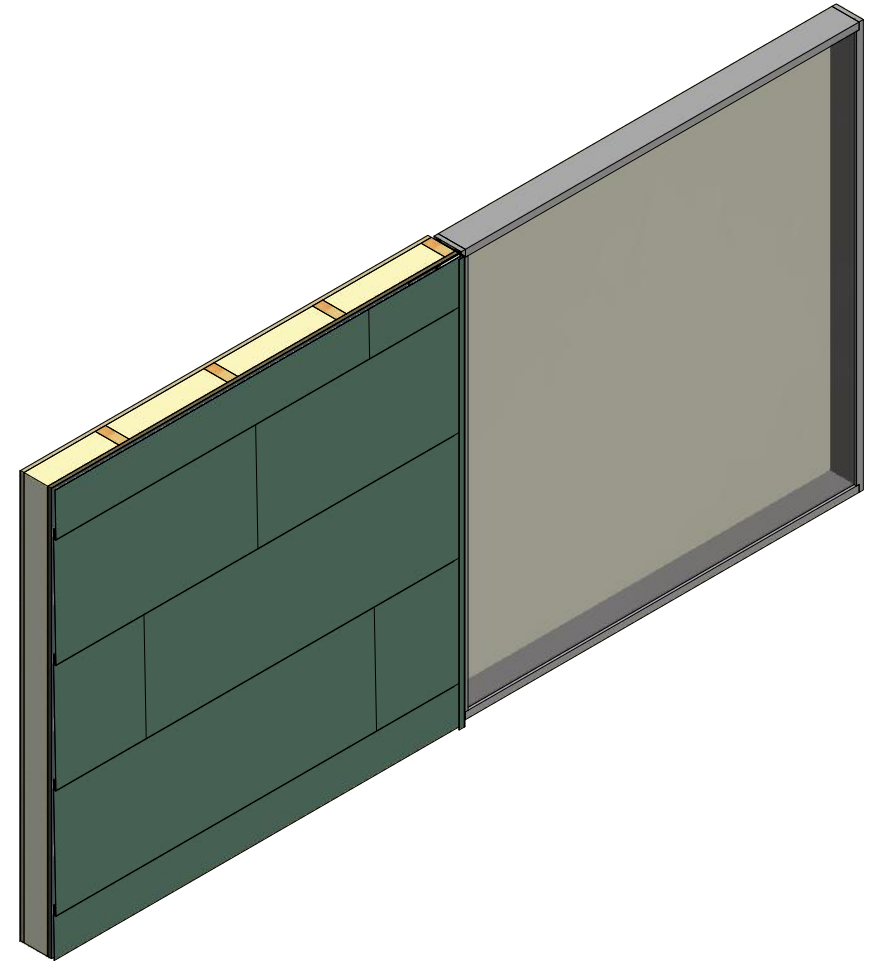
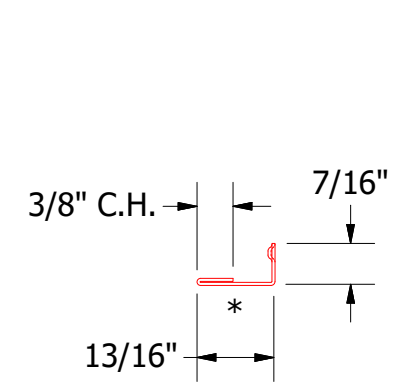


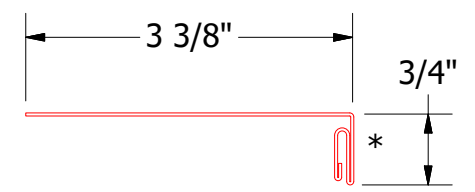
- Window
- Angle Trim with Return
- Insulation
- Backer Rod and Sealant
- Butyl Tape
- #10 x 1" Wafer Head Screw
- Snap J Channel
- Water and Air Resistive Barrier
- Membrane Strip over Snap J Channel
- 1/2" Plywood (min.)
- Versa-Lok Panel
- Versa-Lok Clip
- Interior Finish



VLA683 - Angle Trim with Return



UNS078 - Snap J Cover



VLA039 - Snap J Base

Note: * denotes color side.

ATAS ATAS INTERNATIONAL, INC
 Allentown PA
 610-395-8445
 Mesa AZ
 480-558-7210

TITLE				Versa-Lok Jamb Detail			
REV. NO.		DATE		DWG. NO.		DR	
						KRK	
						DATE	
						2/10/2016	
						APP	
						DAS	
						DATE	
						8/8/16	
						SH. SIZE	
						B	
						SCALE	
						X:X	