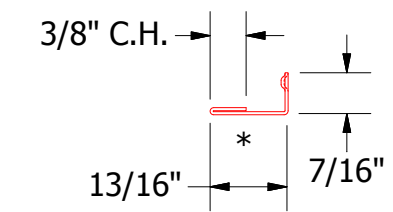
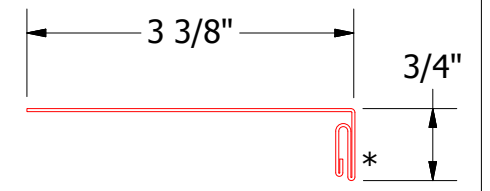
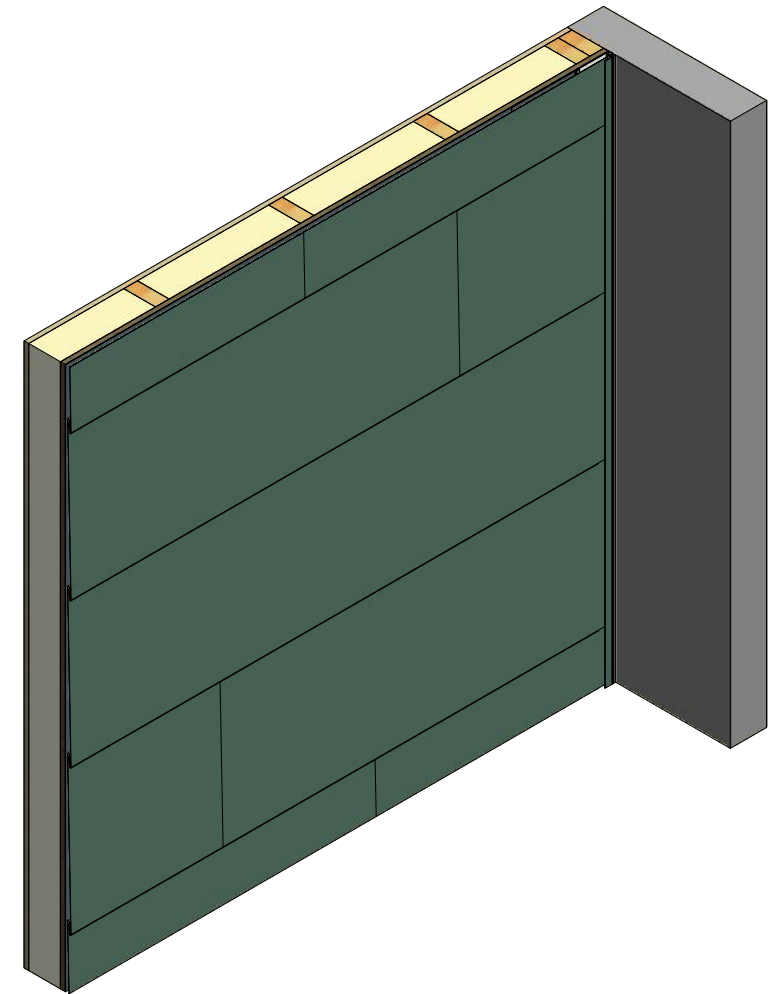


- Interior Finish
- Insulation
- Versa-Lok Clip
- 1/2" Plywood (min.)
- Versa-Lok Panel
- Membrane Strip over Snap J Base
- Water and Air Resistive Barrier
- #10 x 1" Wafer Head Screw
- Snap J Channel
- Backer Rod and Sealant



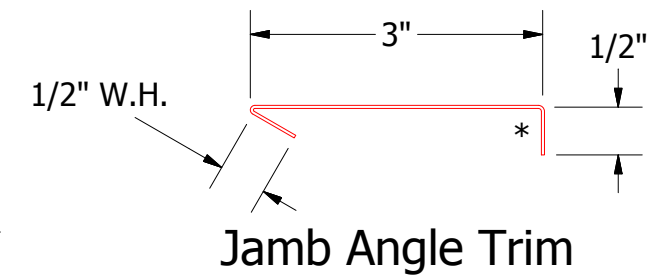
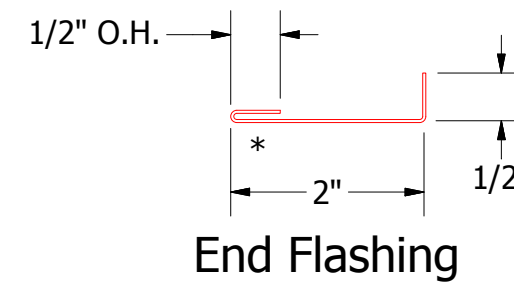
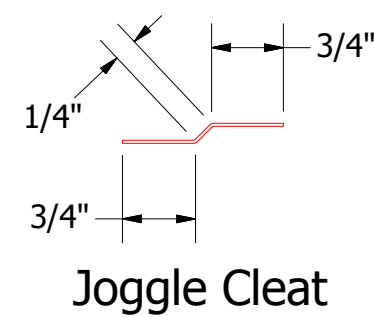
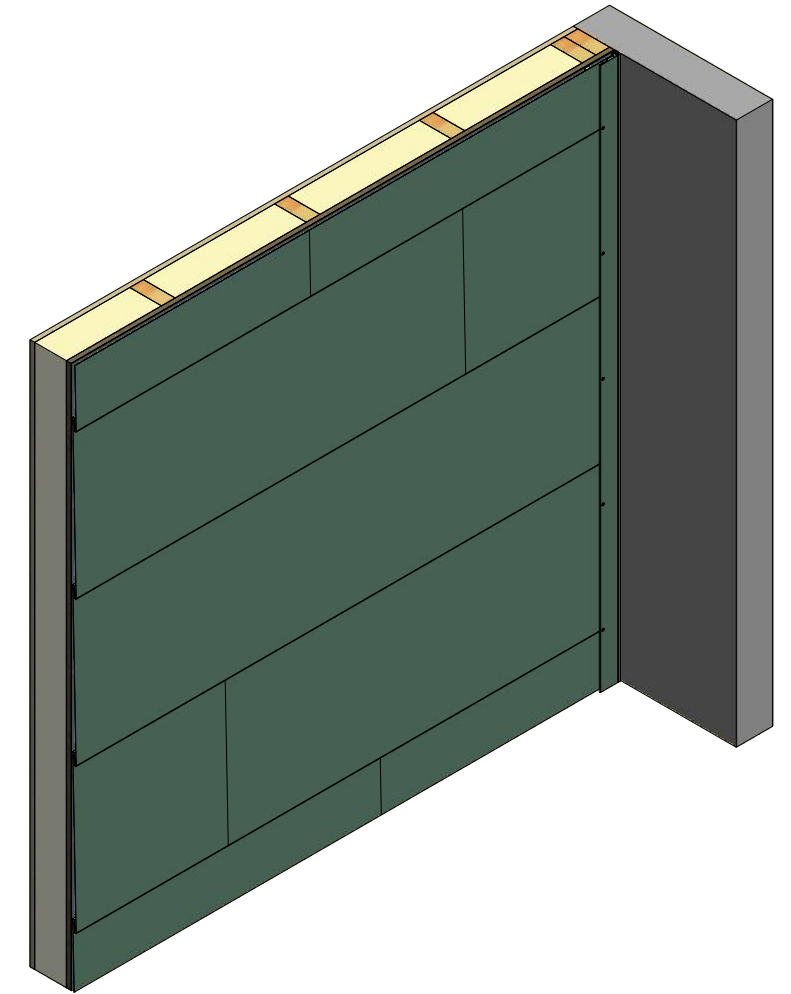
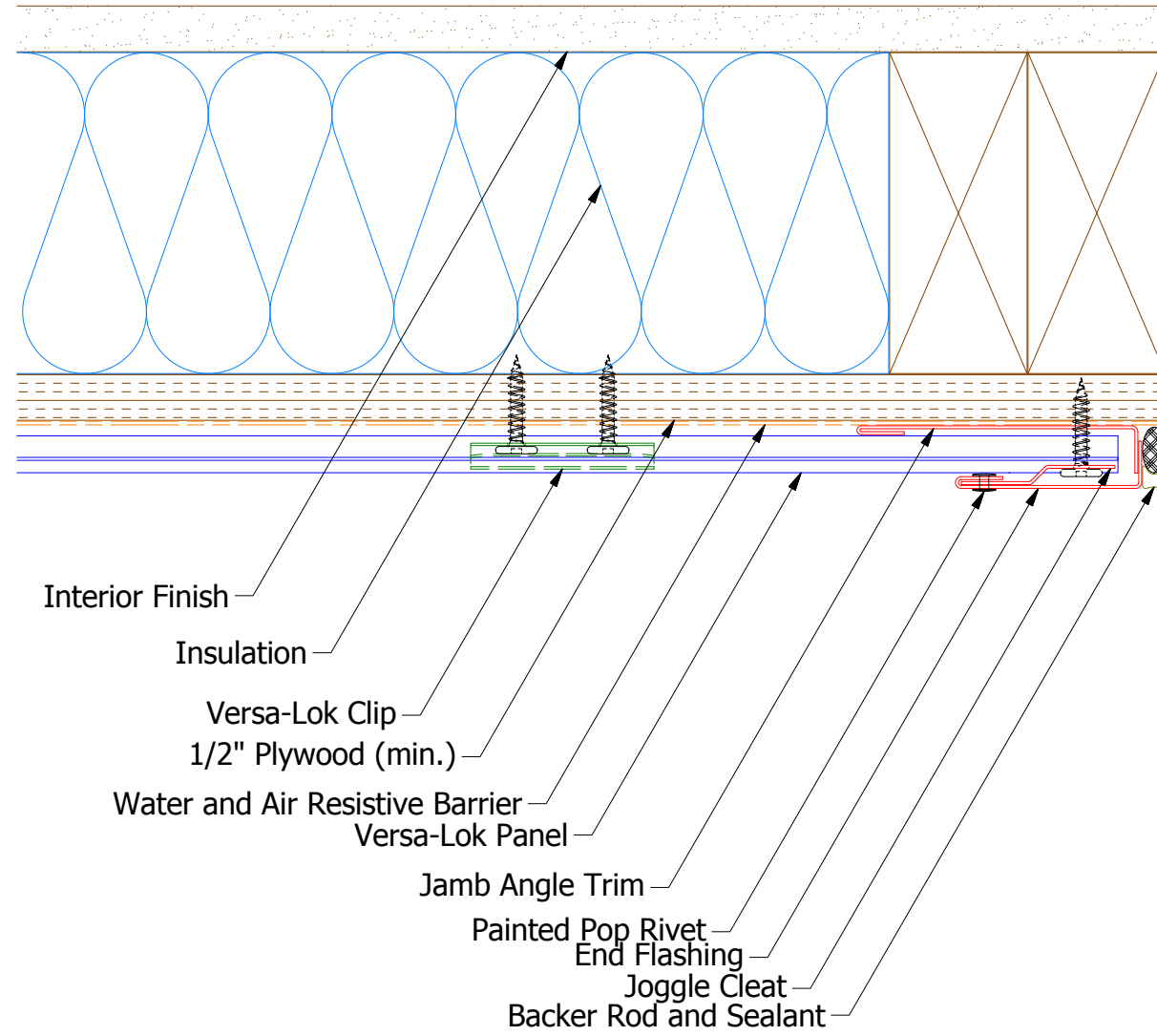
VLA039 - Snap J Base

UNS078 - Snap J Cover

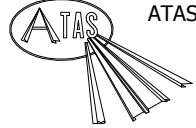
ATAS ATAS INTERNATIONAL, INC
 Allentown PA
 610-395-8445
 Mesa AZ
 480-558-7210

TITLE				Versa-Lok Endwall Detail			
DWG. NO.		DR		DATE		DATE	
		KRK		2/9/2016			
MATERIAL		APP		DATE		DATE	
		DAS		8/8/16			
REV. NO.	DATE	DESCRIPTION OF REVISION	BY	APP	SH. SIZE	SCALE	
					B	X:X	

ALTERNATE ENDWALL DETAIL



REV. NO.	DATE	DESCRIPTION OF REVISION	BY	APP

 ATAS INTERNATIONAL, INC Allentown PA 610-395-8445 Mesa AZ 480-558-7210	
TITLE Versa-Lok Endwall Detail	
DWG. NO.	DR KRK DATE 2/9/2016
MATERIAL	APP DAS DATE 8/8/16
SH. SIZE	B SCALE X:X