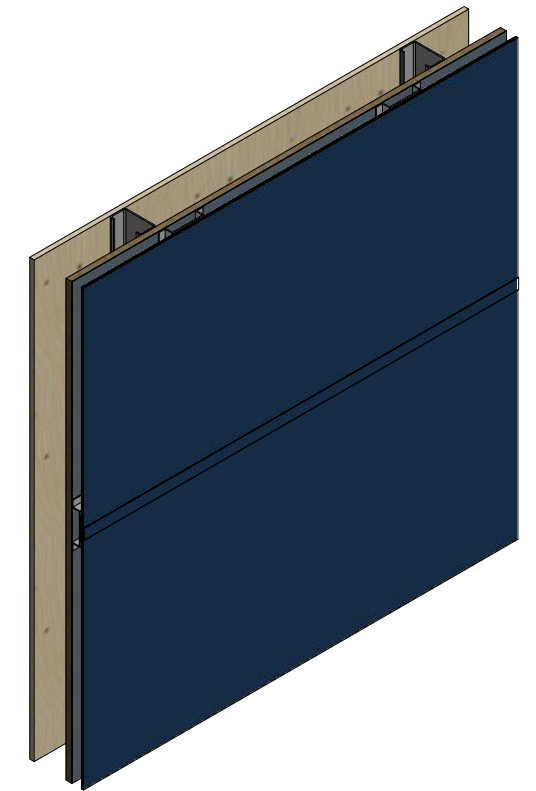
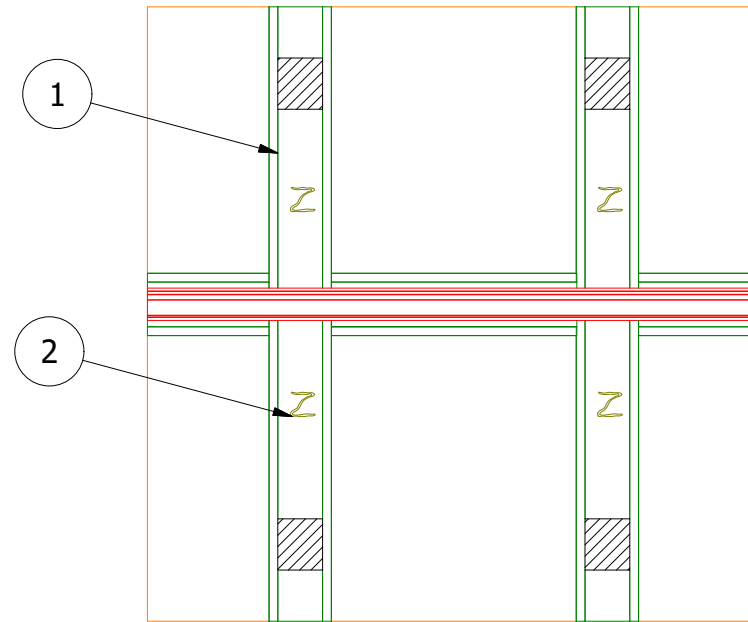
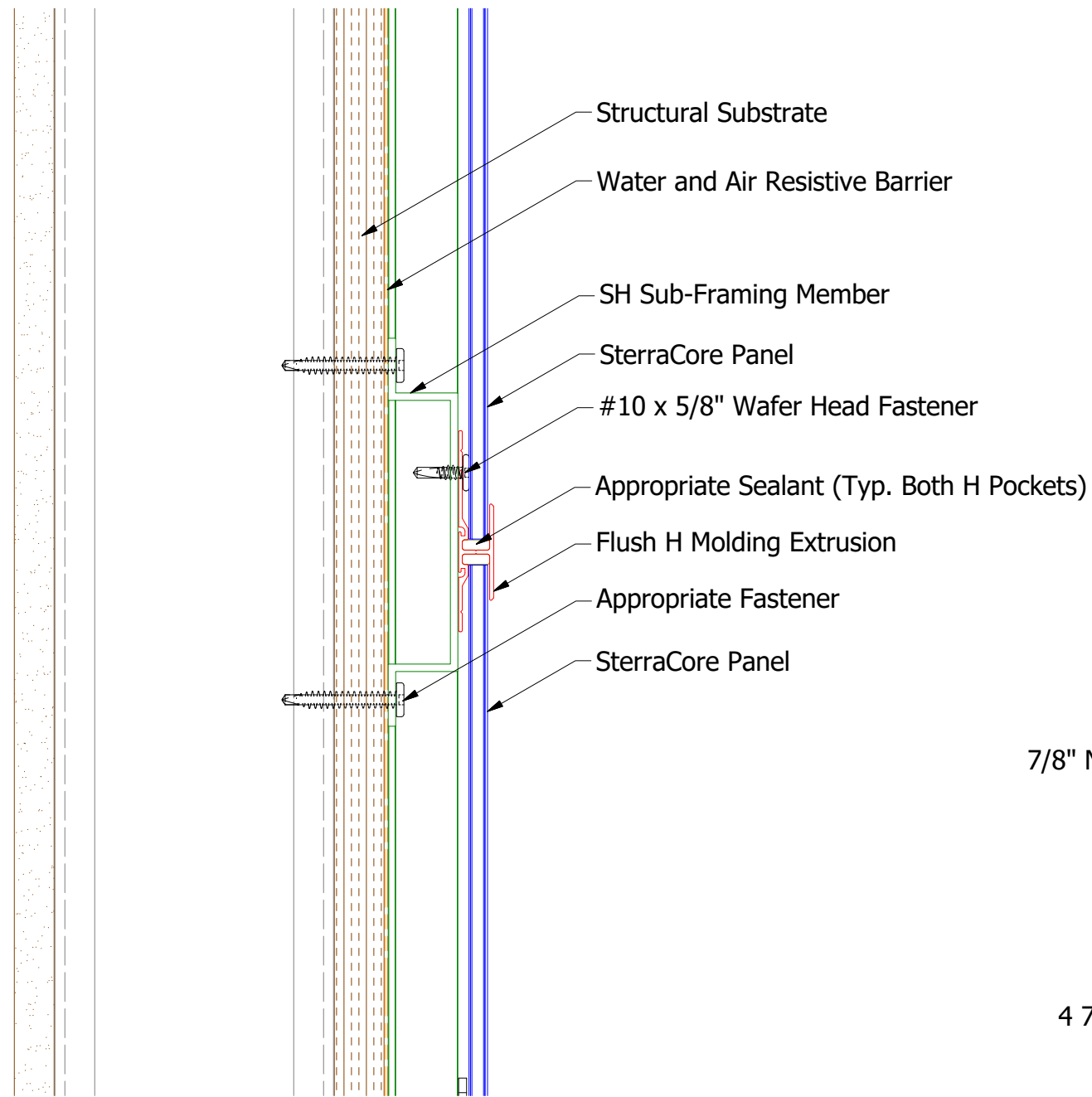
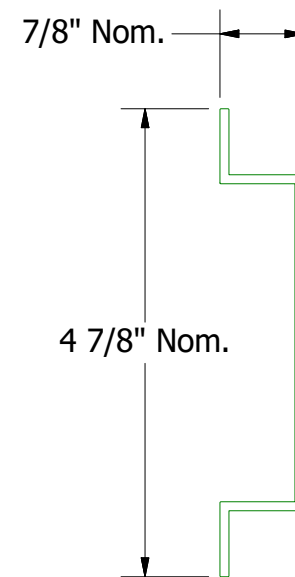


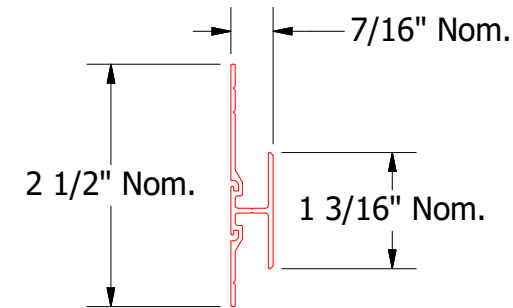
# Horizontal Panel



SterraCore Panel



SH Sub-Framing Member  
(Used for Standard Flush H Molding Extrusion)



Flush H Molding Extrusion

(1) Sub-Framing Member  
Installed 16" - 24" O.C.

(2) Panel Adhesive Applied 16"  
O.C. Vertically and 4" Foam  
Tape Strips Installed Vertically  
on Sub-Framing Member.  
(Refer to Sub-Framing Details)

**Note:** Spacing between Panels and Water and Air Resistive Barrier are shown for Clarity.

**ATAS** ATAS INTERNATIONAL, INC  
Allentown PA  
610-395-8445  
Mesa AZ  
480-558-7210

|  |  |      |                         |      |           |
|--|--|------|-------------------------|------|-----------|
| REV. NO.   |  | DATE | DESCRIPTION OF REVISION | BY   | APP       |
|  |  |      |                         |      |           |
| TITLE<br>SterraCore Horizontal Transition Detail - 1 Piece |  |      |                         |      |           |
| DWG. NO.   |  |      | DR                      | DATE | 5/1/2020  |
|  |  |      | DMR                     |      |           |
| MATERIAL   |  |      | APP                     | DATE |           |
|  |  |      | SH. SIZE                | B    | SCALE X:X |