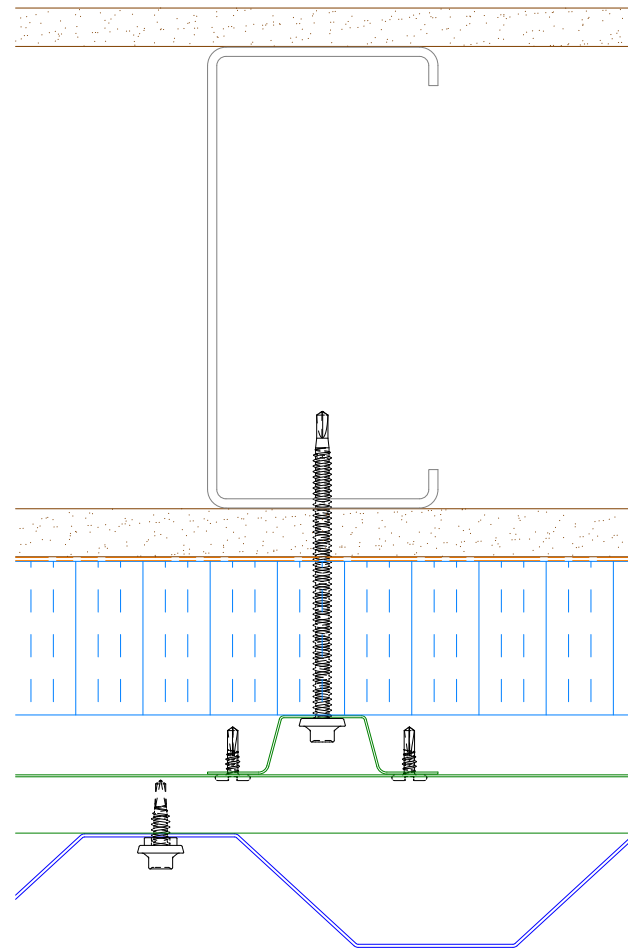
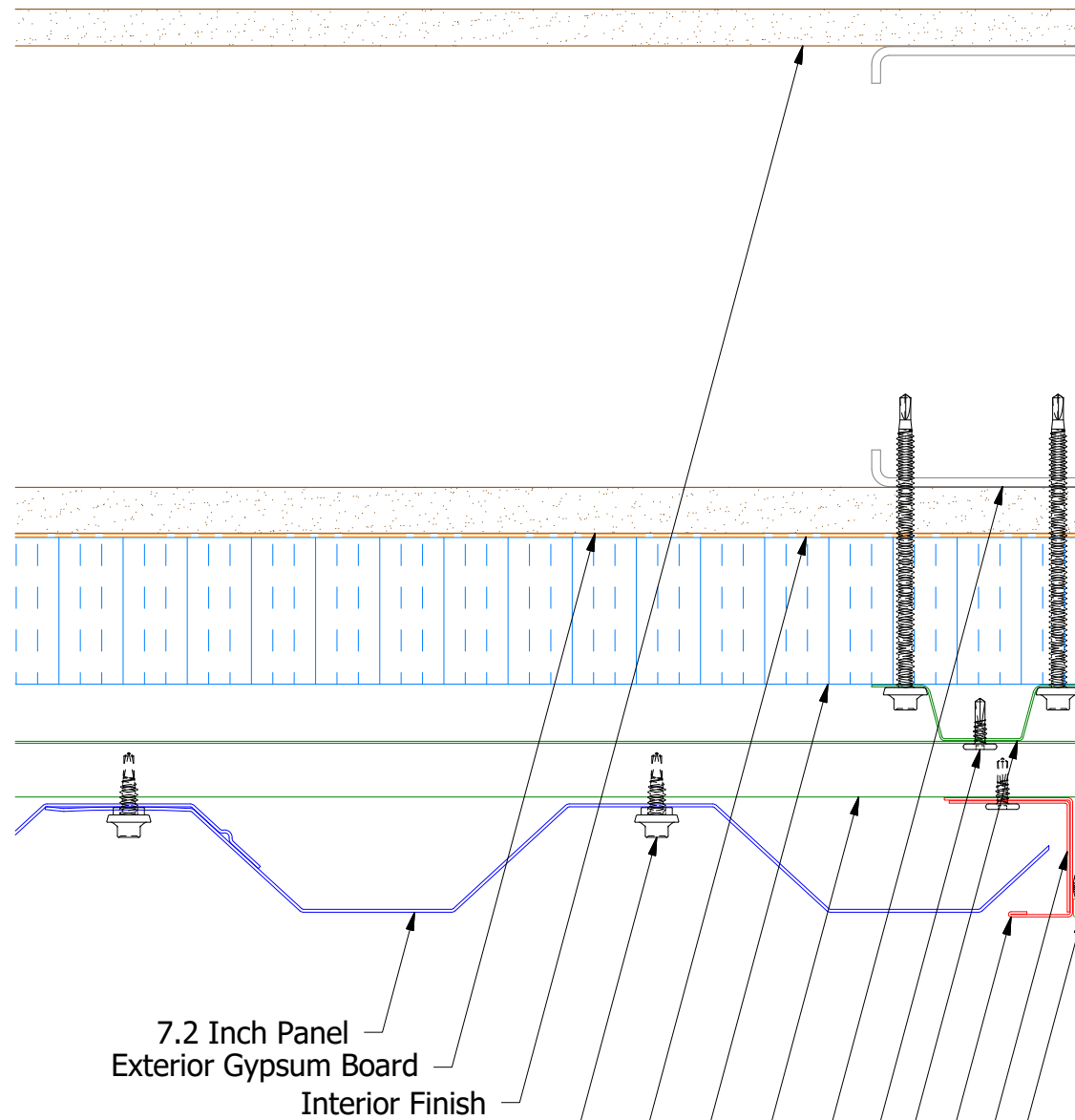


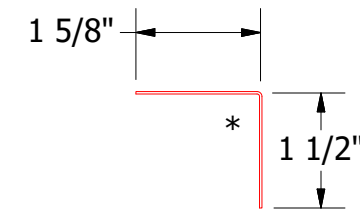
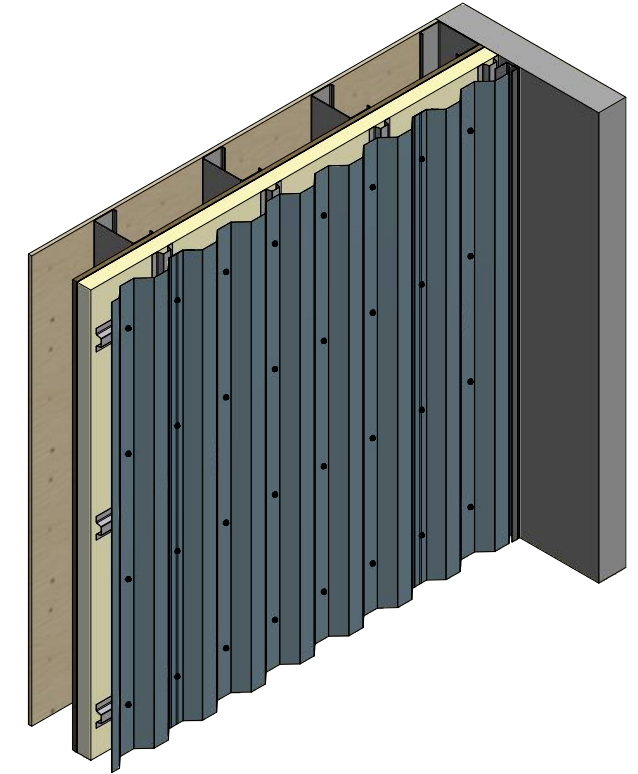
Vertical Panel



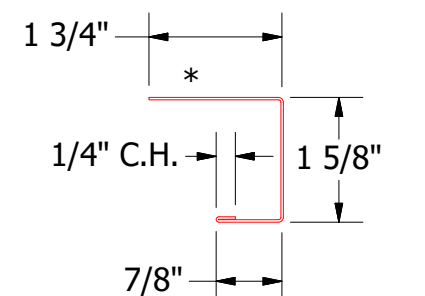
Alternate Subgirt Orientation



- 7.2 Inch Panel
- Exterior Gypsum Board
- Interior Finish
- Water and Air Resistive Barrier
- Water Resistant Insulation
- Horizontal Subgirt
- Metal Wall Stud
- #14 x 7/8" Painted Hex Washer Head Fastener with Washer
- Vertical Subgirt
- J Channel
- Angle Trim
- Backer Rod and Sealant
- #10 x 5/8" Wafer Head Fastener




BWR680-Angle Trim



BWR158-J Channel

REV. NO.	DATE	DESCRIPTION OF REVISION	BY	APP



ATAS INTERNATIONAL, INC
 Allentown PA
 610-395-8445
 Mesa AZ
 480-558-7210

TITLE			
7.2" Rib Open Endwall Detail			
DWG. NO.	DR	DATE	
	DMR	8/11/2016	
MATERIAL	APP	DATE	
	SH. SIZE	B	SCALE X:X