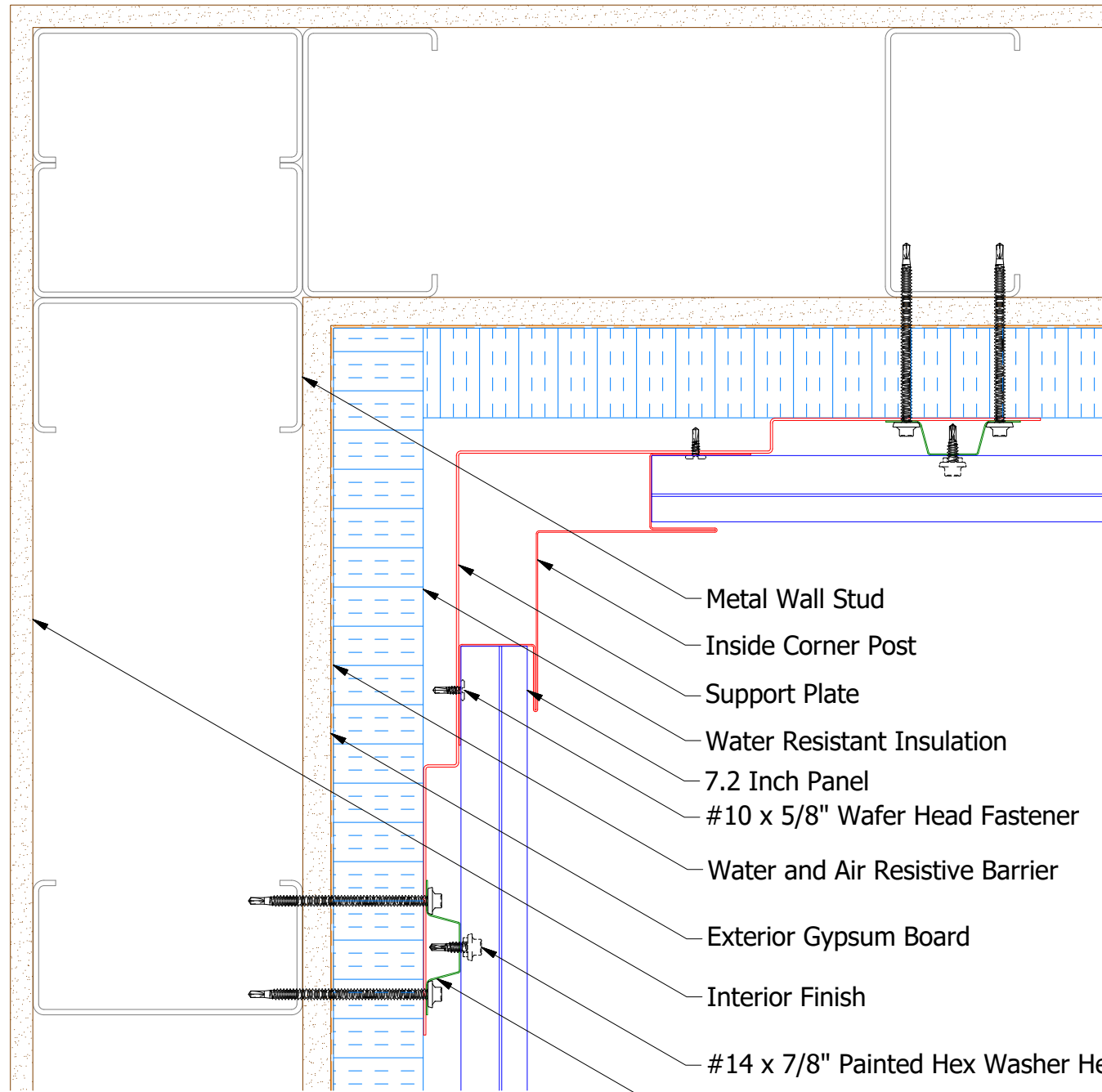
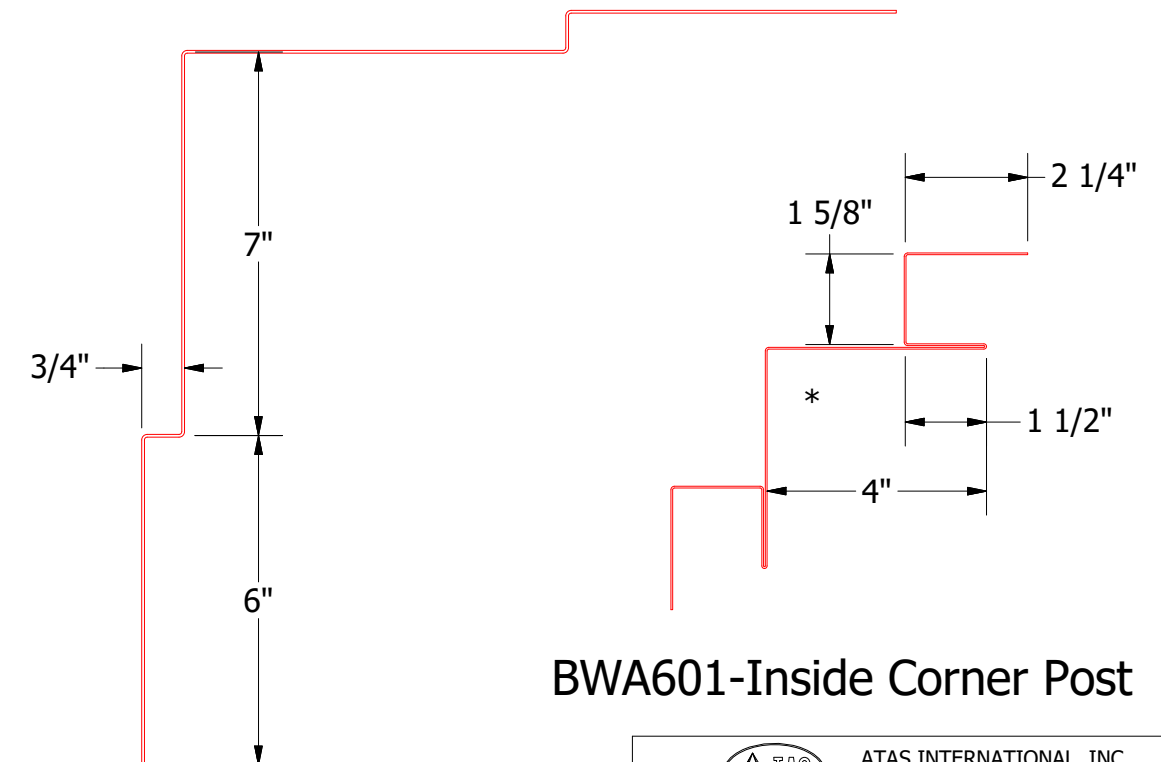
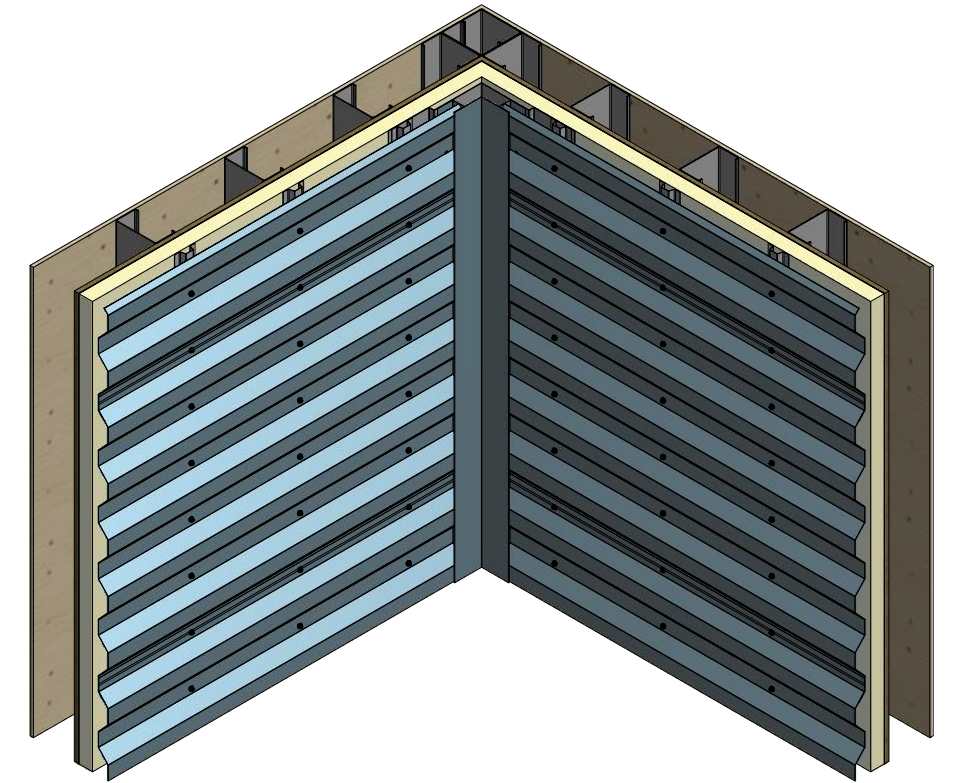
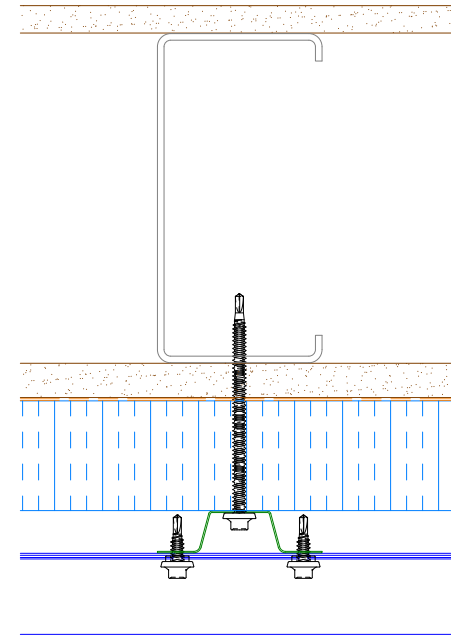


Horizontal Panel



- Metal Wall Stud
- Inside Corner Post
- Support Plate
- Water Resistant Insulation
- 7.2 Inch Panel
- #10 x 5/8" Wafer Head Fastener
- Water and Air Resistive Barrier
- Exterior Gypsum Board
- Interior Finish
- #14 x 7/8" Painted Hex Washer Head Fastener with Washer
- Vertical Subgirt


Alternative Subgirt Orientation



Support Plate

BWA601-Inside Corner Post

NOTE: Optional 18 GA. Plate for Outside Corner Post is Available

REV. NO.		DATE	DESCRIPTION OF REVISION	BY	APP	 ATAS INTERNATIONAL, INC Allentown PA 610-395-8445 Mesa AZ 480-558-7210	
TITLE 7.2" Rib Open Inside Corner Detail						DR	DATE
						DMR	8/12/2016
						APP	DATE
						SH. SIZE	B
						SCALE	X:X