

1. PRODUCT NAME

SterraCore™

MAU999

2. MANUFACTURER

ATAS INTERNATIONAL, INC.

Website: www.atas.com

Email: info@atas.com

Corporate Headquarters:

Allentown, PA 18106

Phone: (800) 468-1441

Western Facility:

Mesa, AZ 85204

Phone: (480) 558-7210

3. PRODUCT DESCRIPTION

Basic Uses:

SterraCore aluminum composite material panels provide durable, eye-catching fascias, soffits, canopies, and decorative towers for retail, schools, hospitals and high profile commercial projects.

Composition & Materials:

Standard Offerings: polypropylene corrugated core between two finished aluminum sheets. Thickness 6mm.

Colors & Finishes:

A choice of over 40 stock colors is available in a 70% PVDF finish. (Request color chart or chips). Custom colors available. An anodized finish is available in Clear Satin or Dark Bronze. Texture is smooth.

4. TECHNICAL DATA

70% PVDF based finishes tested by paint supplier for:

- Dry Film Thickness: ASTM D 1005, ASTM D 1400, ASTM D 4138 or ASTM D 5796
- Specular Gloss: ASTM D 523
- Pencil Hardness: ASTM D 3363
- T-Bend Flexibility: ASTM D 4145
- Mandrel Bend Flexibility: ASTM D 522
- Impact Resistance: ASTM D 2794
- Adhesion: ASTM D 3359
- Water Immersion Resistance: ASTM D 870
- Abrasion Resistance: ASTM D 968
- Acid Resistance: ASTM D 1308
- Acid Rain Resistance (Kesternich): ASTM G 87 or DIN 50018
- Salt Spray: ASTM B 117
- Cyclic Salt Spray: ASTM D 5894 and ASTM D 5487
- Humidity Resistance: ASTM D 2247
- Accelerated Weathering: ASTM D 822 and ASTM G 155, ASTM G 151 or ASTM G 153
- Color Retention, Florida Exposure: ASTM D 2244
- Chalking Resistance: ASTM D 4214
- Cleveland Condensing Cabinet: ASTM D 4585

- Cure Test, MEK Resistance: ASTM D 5402
- Alkali Resistance, Sodium Hydroxide: ASTM D 1308, Procedure 7.2
- Flame Spread Rating: ASTM E 84
- Organic coatings meet requirements of AAMA 2605 when applied to aluminum.

Panel testing/ratings:

- Aluminum: ASTM B 209
- Coil Coating: ASTM A 755

5. INSTALLATION

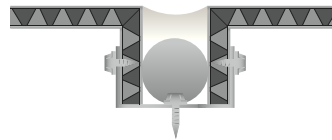
Panel is installed over a solid substrate covered with an appropriate water and air barrier system. Installation methods include clip & seal, rout & return, dry seal, and 1-piece, tight-fit molding.

6. AVAILABILITY & COST

Availability:

SterraCore panels are available through ATAS product distributors. A complete line of related components and trim accessories is available to complete the system. In addition, a complete line of rainware and perimeter roof edge trims can be supplied by ATAS to complement the application. Flat sheet and/or coil stock is available in matching colors for fabrication of related components by the installing contractor.

Cost:



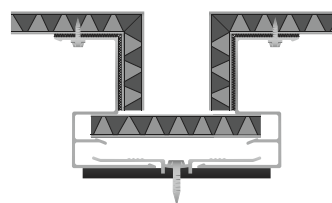
Rout & Return



1-Piece, Tight-Fit Molding



Clip & Seal



Dry Seal

Contact ATAS product distributors for current pricing.

7. WARRANTY

The fluoropolymer, 70% PVDF finish carries a limited warranty against chalking and fading.

8. MAINTENANCE

SterraCore panels require minimal maintenance. Surface residue may be easily removed by conventional cleaning methods. For painted products, minor scratches should be touched up with a matching paint, available from the manufacturer.

9. TECHNICAL SERVICES

Complete technical information and literature are available at www.atas.com. ATAS will assist with design ideas and shop drawings.

10. FILING SYSTEM

- www.atas.com
- Additional product information is available from the manufacturer upon request.

