



**STOCK COLORS** | 70% PVDF resin based coatings provide high-performance durability for exterior and interior applications. These coatings are designed to resist fading, chalking, and abrasion. Meets the requirement of AAMA 2605-13 for aluminum substrates.



Black (02) ●



Forest Green (11) ●



Chocolate Brown (04) ●



Sierra Tan (09) ●



Sandstone (06) ◆



Rocky Grey (16) ●



Ascot White (10) ■



Classic Bronze (01) ◆



Teal (19) ●



Boysenberry (25) ●



Rawhide (15) ●



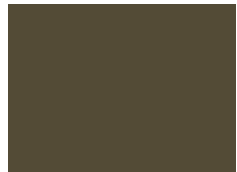
Regal Blue (18) ●



Charcoal Grey (62) ●



Bone White (26) ◆



Medium Bronze (03) ◆



Hemlock Green (30) ●



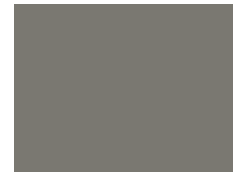
Redwood (07) ●



Concord Cream (05) ●



Slate Blue (21) ●



Slate Grey (20) ▲



Hartford Green (27) ●



Patina Green (12) ●



Mission Red (08) ●

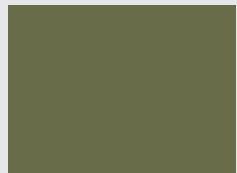


Siam Blue (14) ●

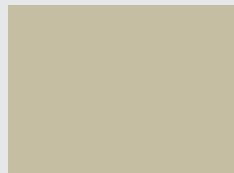


Dove Grey (13) ■

**PREMIUM FINISH** | PVDF resin based coatings, as noted above, with premium pigmentation to obtain metallic or deep color for desired aesthetics.



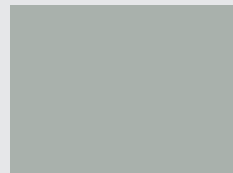
Antique Patina (24)



Champagne (31)



Coppertone (23)



Titanium (35) ●



Silversmith (28) ◆



Brite Red (17) ●

**Stock Materials**

All Standard & Premium Finish Colors are available in:

- 24 ga. steel
- .032 aluminum
- .040 aluminum

**Additional Stock Materials**

**Availability Key:**

- ◆ 22 ga. steel
- ▲ 22 ga. steel, .050 aluminum
- ◆ 22 ga. steel, .050 & .063 aluminum
- .050 aluminum
- .050 & .063 aluminum

Please inquire for custom materials and colors.

A leading manufacturer of sustainable building envelope technology, ATAS utilizes cool pigment paint on many color offerings. Our products reflect infrared radiation, which results in cooler surface temperatures, and maximum fade resistance. Many of the ATAS products meet the qualifications for potential sustainable and agency ratings.

For current SRI values and agency listings, refer to our Color & Material Reference Guide, [www.atas.com/SRI](http://www.atas.com/SRI). 70% PVDF finish carries a limited warranty against fading and chalking. ATAS coated materials are non-staining and virtually maintenance free. Any surface residue is easily removed with conventional cleaning solutions or detergents. For complete selection of additional color offerings, visit [www.atas.com/COLORS](http://www.atas.com/COLORS).

**MATTE FINISH** | 70% PVDF resin based coatings, as noted above, designed to simulate natural metal hues in a high performance paint system.



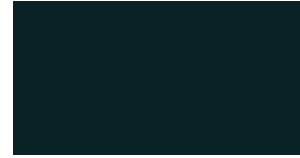
Almond (36)



Anchor Grey (37)



Ash Grey (33)



Char Brown (29)



Matte Black (32)



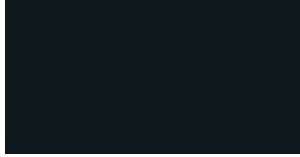
Thunder Grey (34)

**NATURAL METALS**

Due to their beauty, durability and time-proven performance, natural metals are a preferred material used in architecture. Natural metals will weather and patina naturally over time, adding character and aesthetic appeal to any building design. In addition to natural metals, ATAS offers 55% Al-Zn alloy coated steel with acrylic coating and anodized aluminum as standard available materials.



Clear Satin Anodized (70)



Dark Bronze Anodized (71)



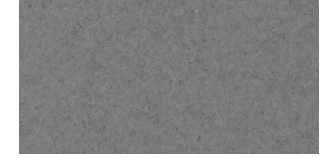
55% Al-Zn Alloy Coated Steel with Acrylic Coating (97)



Copper (49)\*



Classic Stainless Steel (40)\*



Terne Coated Stainless Steel (41)\*



Grey Zinc (50)\*



Dark Zinc (51)\*



Brown Zinc (89)\*



Blue Zinc (94)\*



Red Zinc (95)\*



Green Zinc (96)\*

**WOODLAND SERIES\***

Add the warmth of wood with the durability of metal to your next project. ATAS offers four classic woodgrain patterns with a 70% PVDF coating. Available in .032 aluminum.



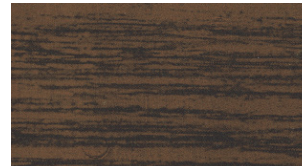
Birch (57)



Cedar (54)



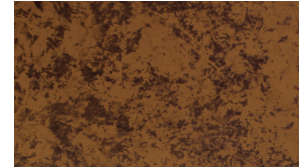
Driftwood (53)



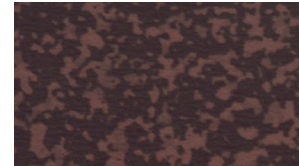
Walnut (55)

**OXIDE SERIES\***

Made to look like weathered steel, combine the aesthetic appeal of aged metal with the advantages of brand new metal cladding with a 70% PVDF finish.



Copper Brown (42)



Tarnished Red (47)

**LAMINATES\***

ATAS International, Inc. offers stacked stone laminate pattern. Our laminate is UV stable for exterior wall applications.



Stacked Stone (85)

\*Special material. Pricing and availability dependent upon project specifics. Color chips available upon request.

Stainless steel products provided by ROOFINOX®. Colors are as close to the actual colors as modern printing allows. Metal color chips available on request (this is a requirement for all premium colors), and should be used for final color selection. If you have requirements or preference for colors or finishes other than shown, contact ATAS. Color availability varies by material, gauge and profile. ATAS reserves the right to modify, eliminate and/or change its products without prior notification. All colors are produced under stringent guidelines and tolerances that are identified within the coated metal industry. Batch to batch variations may occur within these established industry tolerances. Care should be exercised by customer when mixing lots. Contact ATAS for more information.